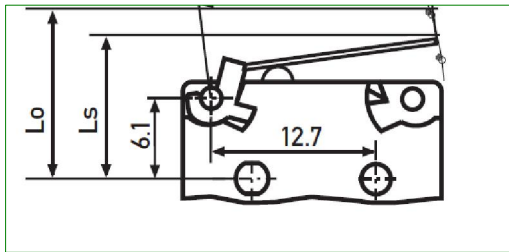
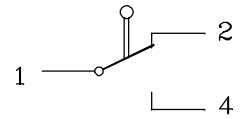
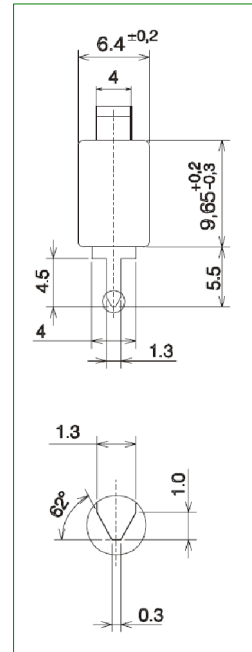
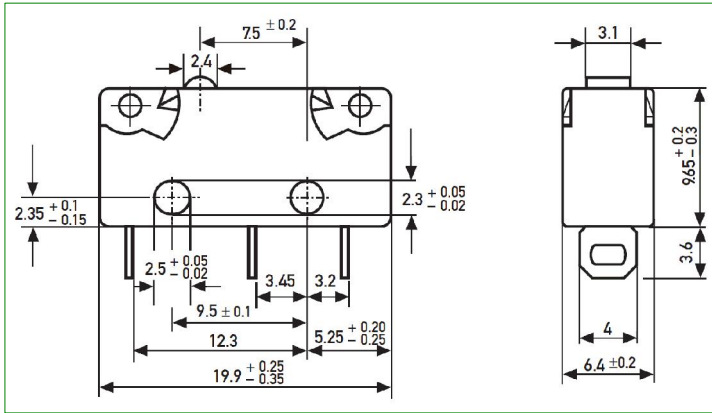


Dimensions in mm

terminals
requiring welding

terminals
for PCB

Connection
diagram
(contactor)



pos.	lever	terminal
01	yes	PCB
02	no	welding
03	yes	PCB
04	no	welding
05	yes	welding
06	no	welding
07	yes	welding
08	yes	welding
09	yes	welding
10	yes	welding
11	??	

1. DESCRIPTION. RT36474/...+... microswitch

+Provide the information for the description specified in paragraph 2.

2. CHARACTERISTICS.

Description information	Lever (mm)	Contact material	Operating force max. c N	Release force min. c N	Normal position Lo max. mm	Switching point Ls mm	Final end of stroke position Le max. mm	Differential stroke max. mm	Group 58
									Family 815351
									Code
01	17,5 (J11)	Silver	70	9.4	12.2	10.2 ±0.9	8.5	0.5	RP0111001
02	-	Silver	200	35	8.8	8.4 +0.1/-0.3	7.7	0.2	RP0191001
03	17,5 (J11)	Golded	70	10.2	12.1	10.1 +0.1/-0.3	8.4	0.5	RP0192001
04	-	Golded	200	35	8.8	8.4 +0.1/-0.3	7.7	0.2	RP0232001
05	17,5 (J11)	Golded	75	13	12.2	10.3 ±0.9	8.5	0.4	RP0417001
06	-	Silver	200	35	8.8	8.4 +0.1/-0.3	7.7	0.2	RP0383001
07	17,5 (J11)	Silver	28	3.1	12.2	10.3 ±0.9	8.7	0.4	RP0512001
08	17,5 (J11)	Golded	28	3.1	12.2	10.3 ±0.9	8.7	0.4	RP0513001
09	40 (J51)	Silver	29	3.4	18	12 ±2.1	8	1.5	RP0723001
10	40 (J51)	Silver	29	3.4	18	12 ±2.1	8	1.5	RP0736001
11	??	??	??	??	??	?? ±??	??	??	RP0773001

Rated voltage Ue 250 Vac
 Rated current Ie AC14 5 A
 Insulation voltage Uimp 2500 V
 Distance between open contacts 0.4 mm
 Limiting operating temperatures from -40 °C to 105 °C

LB-PA	A	L2541	E	L7613
Date: 22.12.2005	B	L3784		
Compiler	Seen by	C	L6786	
Carrara	Azzola	D	L7510	

3. BREAKING CAPACITY

(According to EN-61058-1):

Voltage Power supply	DESCRIPTION											BREAKING CAPACITY ref. EN61058-1	
	01	02	03	04	05	06	07	08	09	10	11	Resistive load	Inductive load
24 Vcc	X	X					X					10 A	4 A
48 Vcc	X	X					X					1,2 A	0,7 A
110 Vcc	X	X					X					0,45 A	0,3 A
220 Vcc	X	X					X					0,35 A	0,2 A
30 Vca			X	X	X			X		X		0,3 A	
125 Vca			X	X	X			X		X		0,1 A	
250 Vca	X	X					X		X			6 A	3 A
250 Vca						X						3 A	2 A

According to UL 1054: 6 A 125/250 VAC (pos. 01, 02, 09)

According to UL 1054: 0.1 A 125 VAC (pos. 03, 04)

Application categories (according to EN60947-5-1)		
Voltage (V)	Category	Current
125	AC 14	6 A
125	DC 13	0.3 A
250	AC 14	5 A
250	DC 13	0.15 A

4. MATERIALS.

Guard: PA 6.6 thermoplastic

5. DEGREE OF PROTECTION: IP00

Edition **E**

Confidential
company
information

APPLICATION.

Description information	EQUIPMENT SWITCHBOARD	Notes

ACCEPTANCE CHECK. Visual and dimensional check.

APPROVED SUPPLIERS.

Description information	SUPPLIERS AND RESPECTIVE CORRESPONDING TYPES		
	SAIA-BURGESS	ALTA	
01	X4G308N1BSM91AL	MS2N-5L12N-1D(AG)S	
02	X4G303K1BB		
03	X4G308K8DMM91AP	MS2N-01L12N-1D(AU)S	
04	X4G303K8DM		
05	X4G303K8DMJ11		
06	X4G303K1CC		
07	X4C303K1BBJ11		
08	X4C303K8DMJ11		
09	X4G303N1BBJ51		
10	X4C303K8DMJ51		
11			

ORDERING DESCRIPTION. Description as in paragraph 1 and following paragraphs: according to our appended table.

LB-PA	A	L2541	E	L7613
Date: 22.12.2005	B	L3784		
Compiler	Seen by	C	L6786	
Carrara	Azzola	D	L7510	