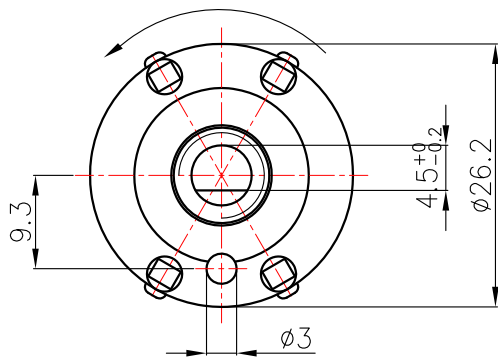
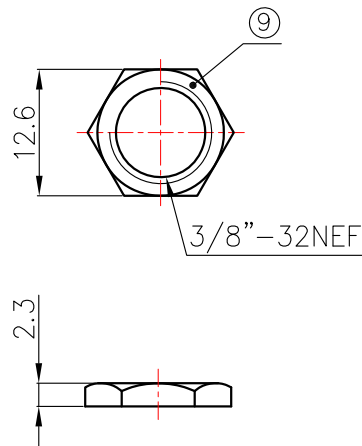


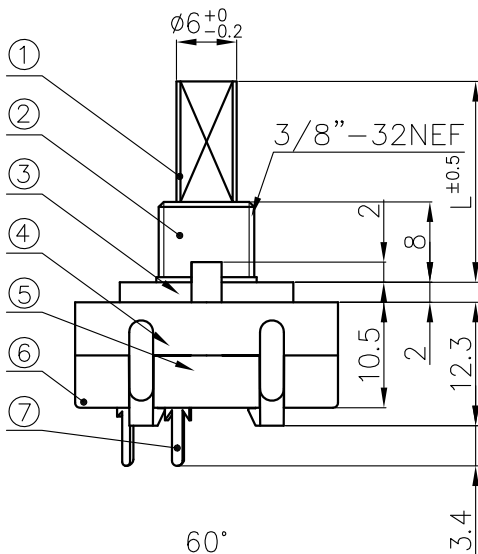
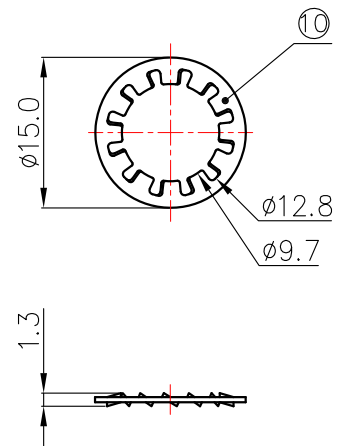
DIRECTION OF ROTATION



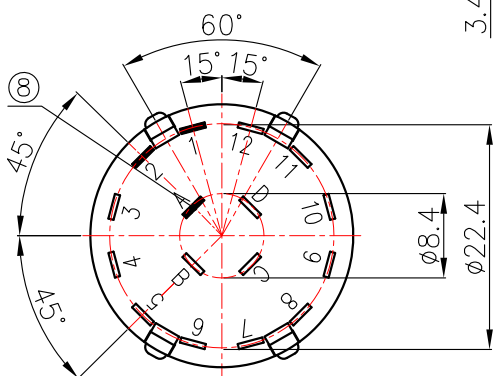
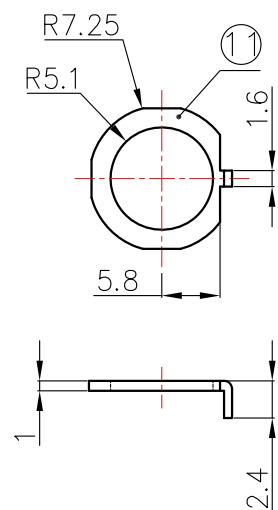
NUT 1PC



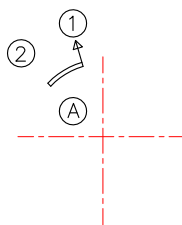
WASHER 1PC t=0.5



CENTER PLATE 1 PCS



SCHEMATIC



11	SR2630	Lock Washer	1	SPCC t=1.0	Zinc Plating
10	W-3/8"	Washer	1	Steel t=0.5	Zinc Plating
9	N-3/8"	NUT	1	Steel t=2.3	Zinc Plating
8	SR26205-3	Internal terminal	1	Brass	Silver Plating
7	SR26205N	External terminal	2	Brass	Silver Plating
6	SR2611-4C	Element	1	Nylon+30%FB	No Plating
5	SR2527	Steel Ball	2	Steel	Ni Plating
4	SR2615	Spring	1	SWPA	Ni Plating
3	SR2606	Contact Plate	1	Phosphor-bronze	Silver Plating
2	SR2609	Case	1	Nylon+30%FB	No Plating
1	SR2601- F	Shaft	1	POM	No Plating

NO	MODEL	L
	15F	15
	20F	20
	25F	25

NO	MODEL	L
	13F	13
	18F	18
	23F	23
	28F	28
	33F	33
	38F	38

NO	Part No	Description	Q'TY	Material	Finishing	MODEL	SR262-1-2-	F-N	A
TOLERANCES		DIMENSION		SCALE	DRAWING BY	CHECKED BY	APPROVED BY	DRAWING NO.	
less than 10	± 0.3	m/m	/	田	Jan.04'09			SR262-142	
above 10 - 30	± 0.5							Switch \SR262 \Spec	
above 30 - 100	± 1.0								
angular dimension	± 5 °								