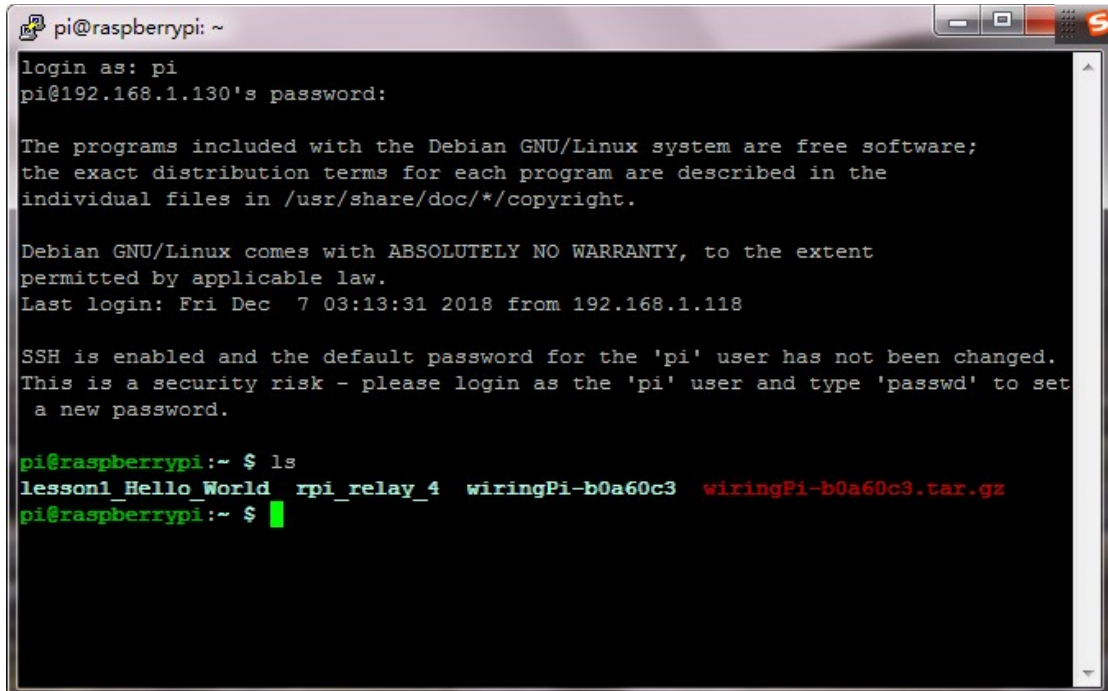


# How to Use the Camera

1. When installing the Raspberry Pi system (my system image is 2017-01-11-raspbian-jessie-lite), the system can be selected by yourself and is compatible with most of the mirrored systems.
2. Enter the Raspbian system.



```
pi@raspberrypi: ~
login as: pi
pi@192.168.1.130's password:

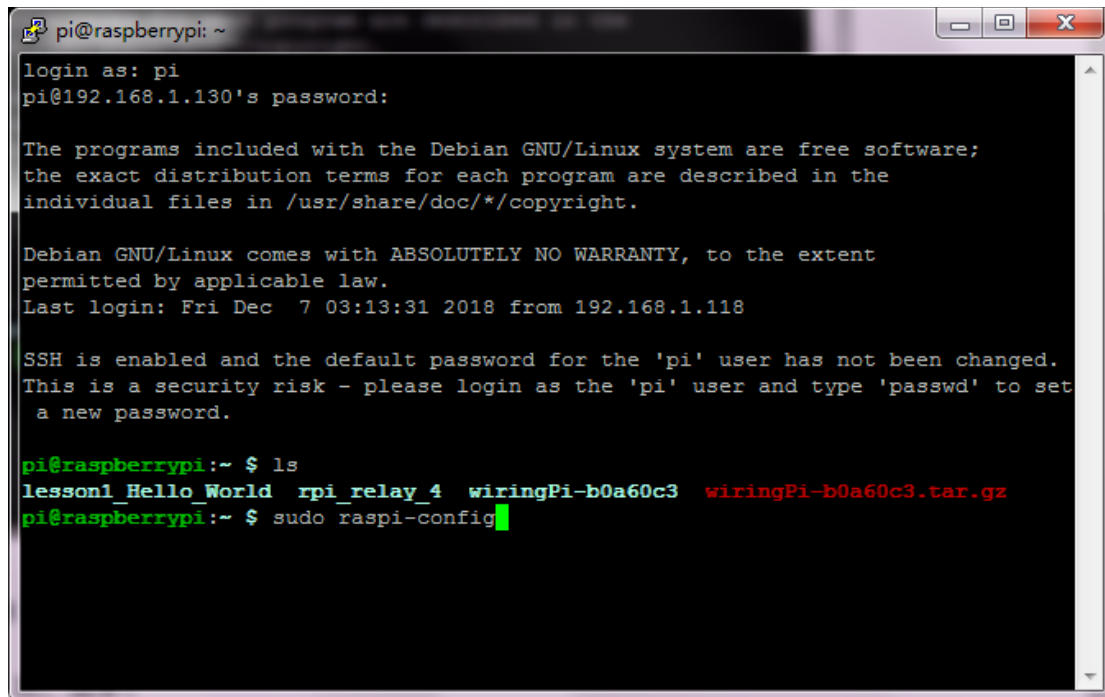
The programs included with the Debian GNU/Linux system are free software;
the exact distribution terms for each program are described in the
individual files in /usr/share/doc/*/copyright.

Debian GNU/Linux comes with ABSOLUTELY NO WARRANTY, to the extent
permitted by applicable law.
Last login: Fri Dec 7 03:13:31 2018 from 192.168.1.118

SSH is enabled and the default password for the 'pi' user has not been changed.
This is a security risk - please login as the 'pi' user and type 'passwd' to set
a new password.

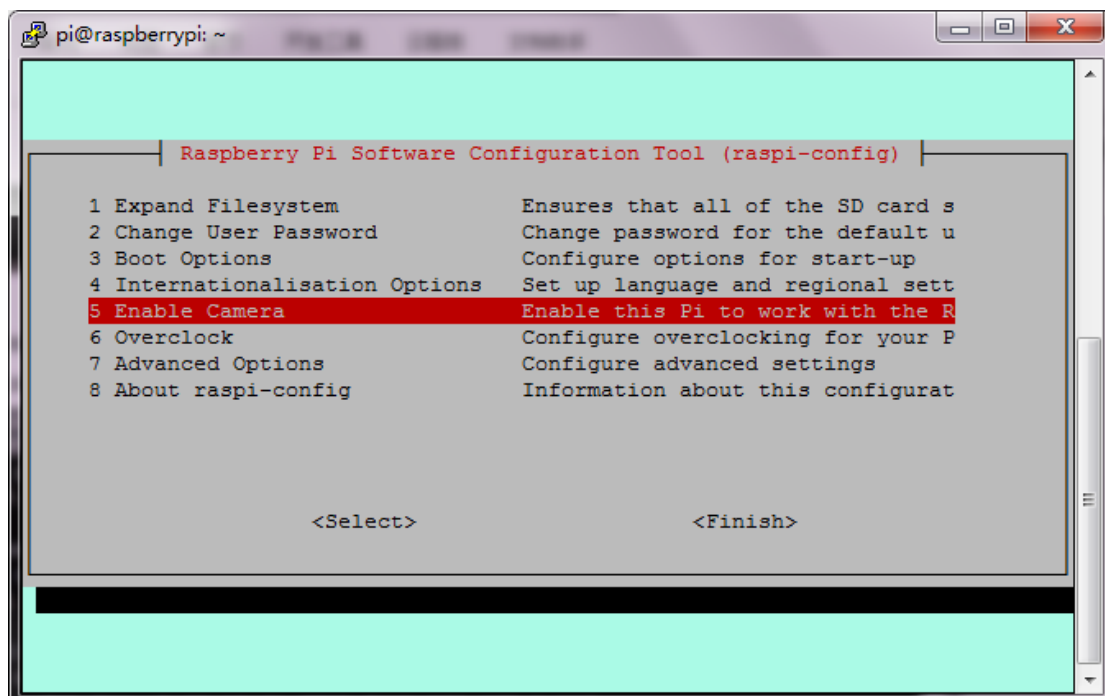
pi@raspberrypi:~ $ ls
lesson1_Hello_World  rpi_relay_4  wiringPi-b0a60c3  wiringPi-b0a60c3.tar.gz
pi@raspberrypi:~ $
```

3. Use raspi-config to configure the camera, then execute `sudo raspi-config`.



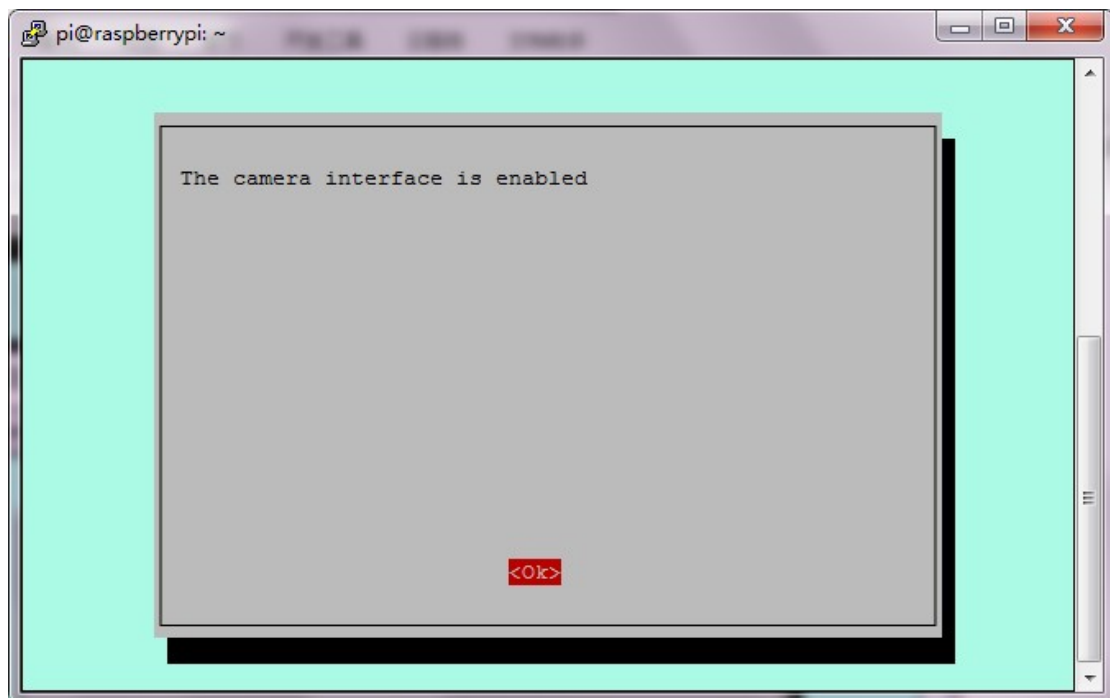
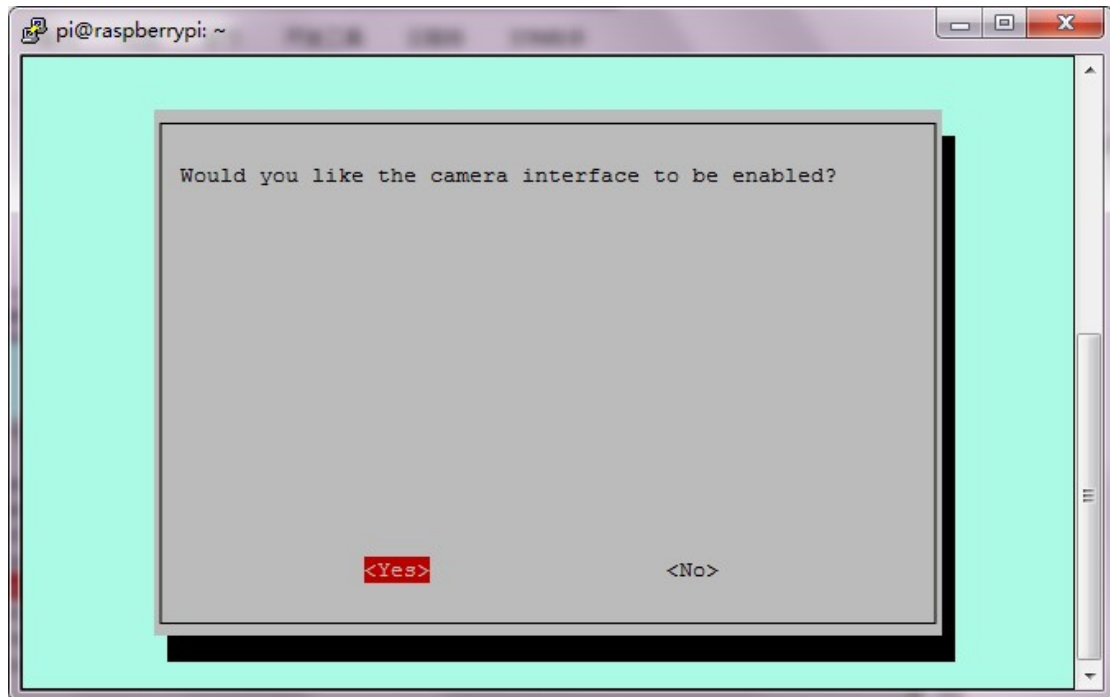
```
pi@raspberrypi: ~  
login as: pi  
pi@192.168.1.130's password:  
  
The programs included with the Debian GNU/Linux system are free software;  
the exact distribution terms for each program are described in the  
individual files in /usr/share/doc/*/copyright.  
  
Debian GNU/Linux comes with ABSOLUTELY NO WARRANTY, to the extent  
permitted by applicable law.  
Last login: Fri Dec 7 03:13:31 2018 from 192.168.1.118  
  
SSH is enabled and the default password for the 'pi' user has not been changed.  
This is a security risk - please login as the 'pi' user and type 'passwd' to set  
a new password.  
  
pi@raspberrypi:~ $ ls  
lesson1_Hello_World  rpi_relay_4  wiringPi-b0a60c3  wiringPi-b0a60c3.tar.gz  
pi@raspberrypi:~ $ sudo raspi-config
```

Move the cursor to the Enable Camera item and enter.

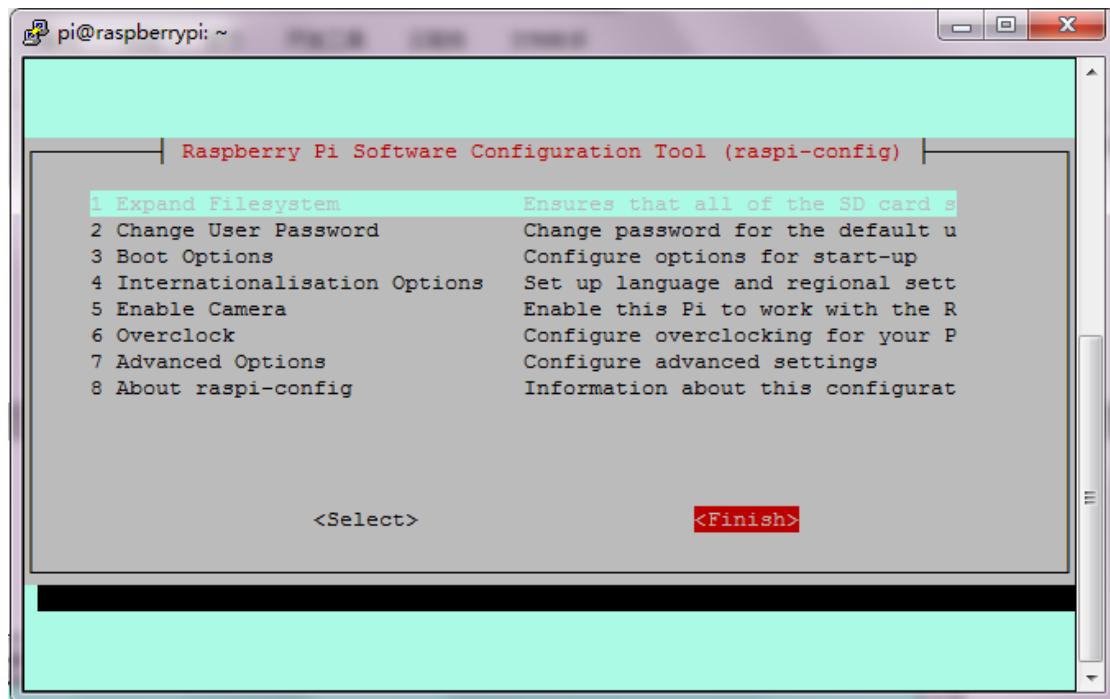


```
pi@raspberrypi: ~  
  
Raspberry Pi Software Configuration Tool (raspi-config)  
  
1 Expand Filesystem          Ensures that all of the SD card s  
2 Change User Password       Change password for the default u  
3 Boot Options               Configure options for start-up  
4 Internationalisation Options Set up language and regional sett  
5 Enable Camera               Enable this Pi to work with the R  
6 Overclock                  Configure overclocking for your P  
7 Advanced Options           Configure advanced settings  
8 About raspi-config         Information about this configurat  
  
<Select>                    <Finish>
```

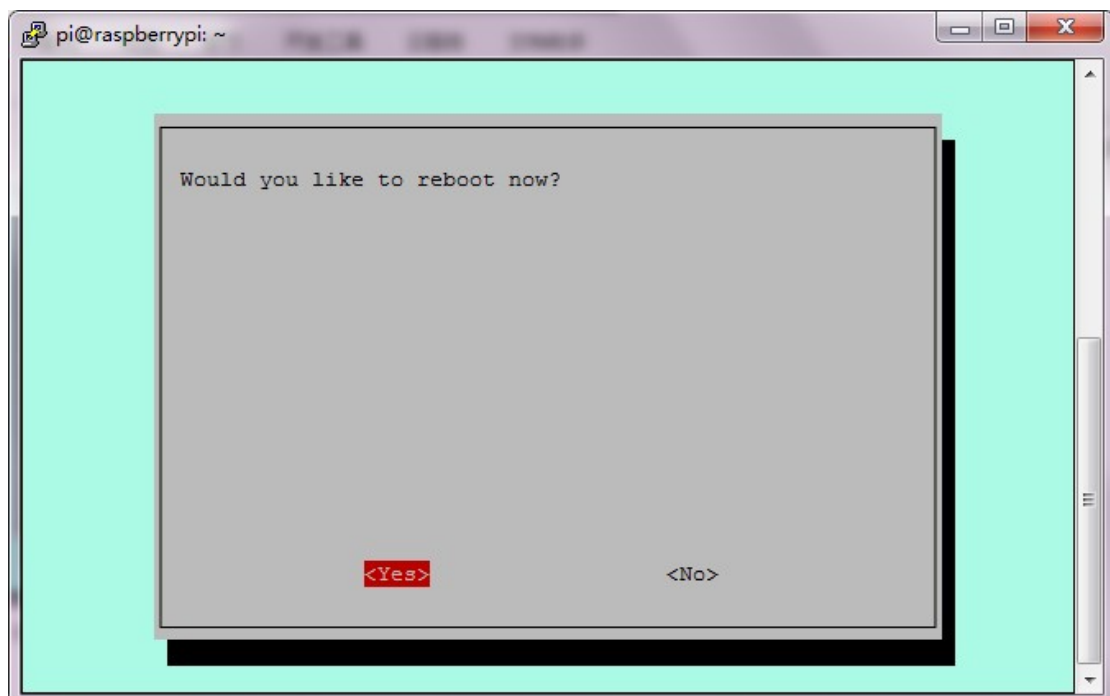
Select YES and OK.



Select Finish.

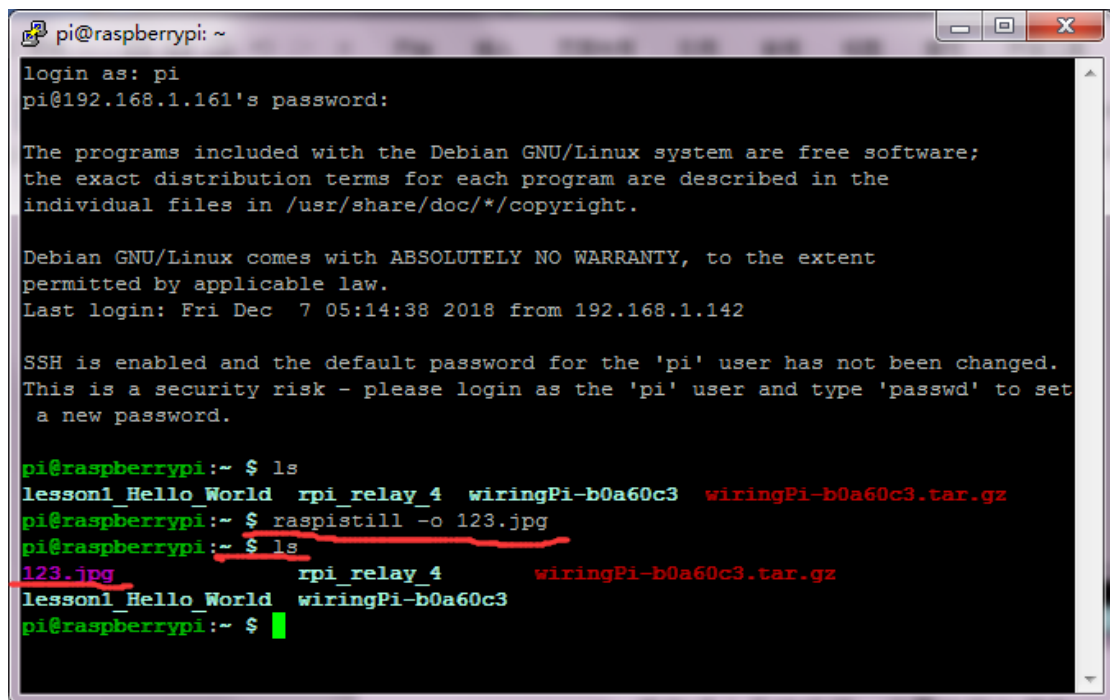


Click Yes



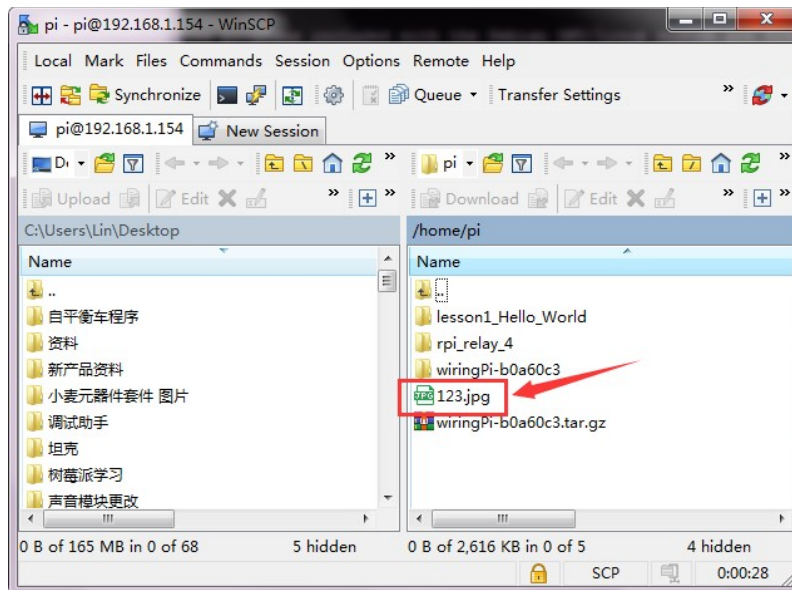
4. Re-enter the system terminal and set up picture taking and photography.

1) To take a picture, please execute the following statement in the terminal. 123.jpg is the name of the photo, which can be set.



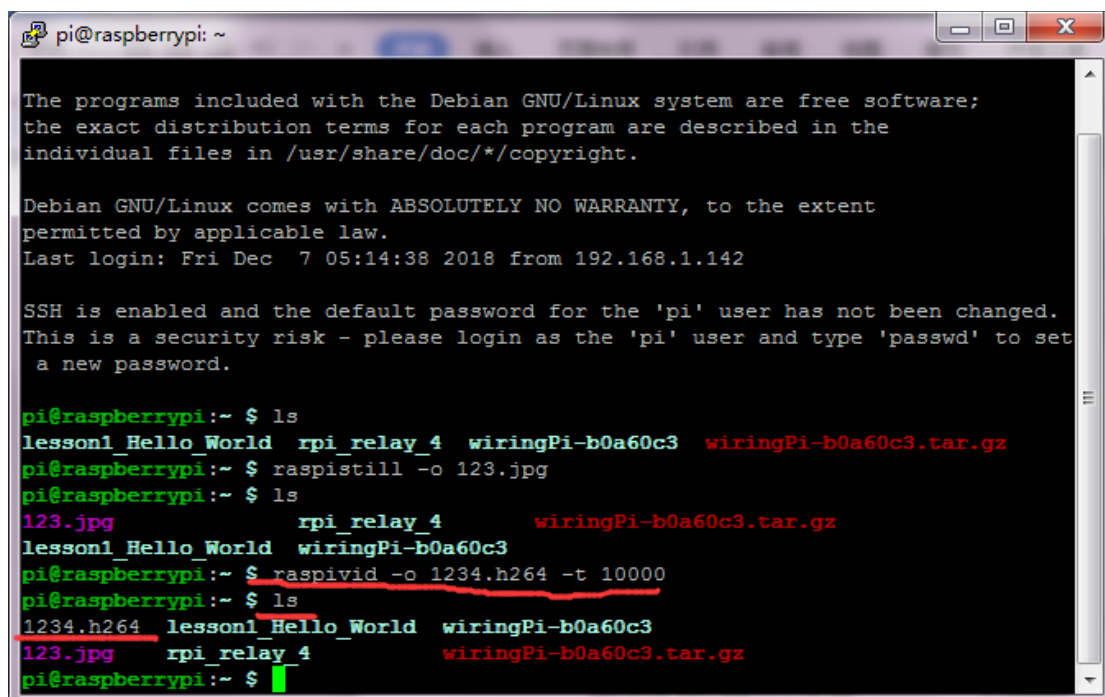
```
pi@raspberrypi: ~  
login as: pi  
pi@192.168.1.161's password:  
  
The programs included with the Debian GNU/Linux system are free software;  
the exact distribution terms for each program are described in the  
individual files in /usr/share/doc/*/copyright.  
  
Debian GNU/Linux comes with ABSOLUTELY NO WARRANTY, to the extent  
permitted by applicable law.  
Last login: Fri Dec 7 05:14:38 2018 from 192.168.1.142  
  
SSH is enabled and the default password for the 'pi' user has not been changed.  
This is a security risk - please login as the 'pi' user and type 'passwd' to set  
a new password.  
  
pi@raspberrypi:~ $ ls  
lesson1_Hello_World  rpi_relay_4  wiringPi-b0a60c3  wiringPi-b0a60c3.tar.gz  
pi@raspberrypi:~ $ raspistill -o 123.jpg  
pi@raspberrypi:~ $ ls  
123.jpg  rpi_relay_4  wiringPi-b0a60c3.tar.gz  
lesson1_Hello_World  wiringPi-b0a60c3  
pi@raspberrypi:~ $
```

Generate pictures taken by the camera, which can be exported via the WinSCP software.



2) The camera asks the terminal to execute the following statement.

`raspivid -o 1234.h264 -t 10000(-t 10000 means record for 10 s, users can adjust it according to their needs).`



Generate the video taken by the camera, you can use WinSCP software to export the video.

