

SLIDE SWITCH

PART NO : SL

SPECIFICATION

Contact Rating : 6A 250VAC 8A 125V AC

4A 250V ~ μ T85 / T55

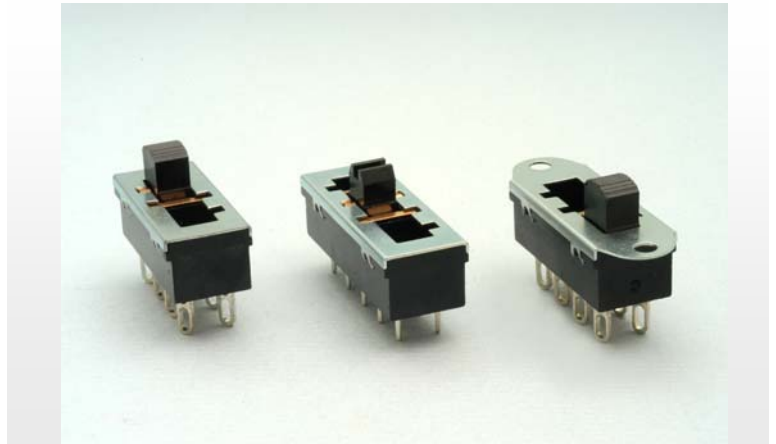
Contact Resistance : 50 mΩ MAX

Insulation Resistance : 100 MΩ (MIN) 500V DC

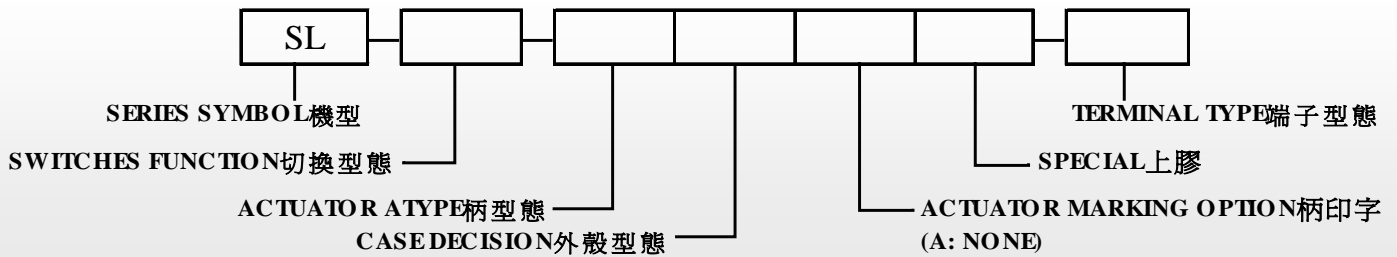
Dielectric Strength : 2000V AC-1 minute

Electric Life : 6000 cycles

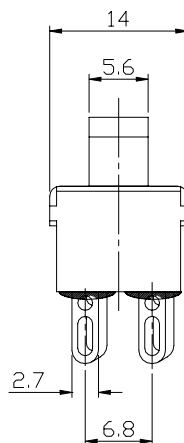
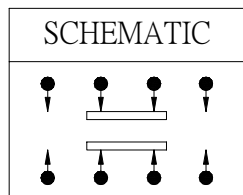
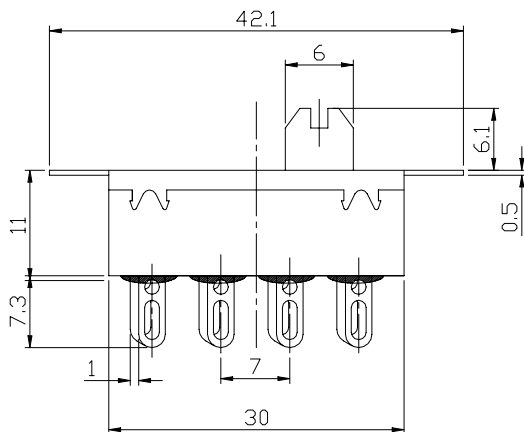
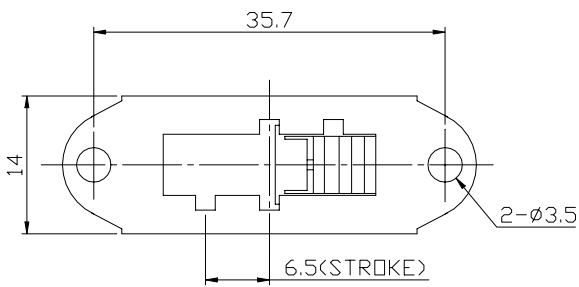
Operating Force : 800 ± 200gram



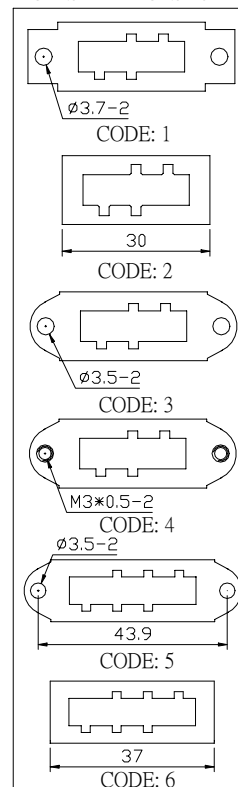
PART NUMBERING SYSTEM



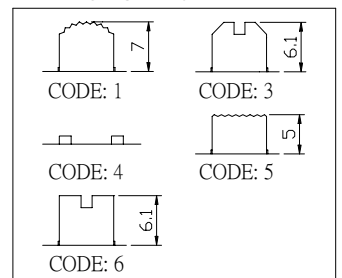
DIMENSIONS in mm



CASE DECISION



ACTUATOR TYPE



CODE	SWITCHES FUNCTION								
2	<table border="1"> <tr> <td>ON</td> <td>ON</td> <td>ON</td> </tr> <tr> <td>ON</td> <td>ON</td> <td>ON</td> </tr> </table>	ON	ON	ON	ON	ON	ON		
ON	ON	ON							
ON	ON	ON							
3	<table border="1"> <tr> <td>ON</td> <td>ON</td> <td>ON</td> <td>ON</td> </tr> <tr> <td>ON</td> <td>ON</td> <td>ON</td> <td>ON</td> </tr> </table>	ON	ON	ON	ON	ON	ON	ON	ON
ON	ON	ON	ON						
ON	ON	ON	ON						

TERMINAL TYPE

