



Email Login

Product Show

Your location : Home>>Product Show

Username :

Password :

LOGIN

Product Catalog

- Rocker Switch
- Rotary Switch
- Key Switch
- Push Button Switch
- Terminal Block
- Indicator Light
- AC Socket
- Slide Switch

Please input product keyword
:

search

Click to enter the Advanced Search>>



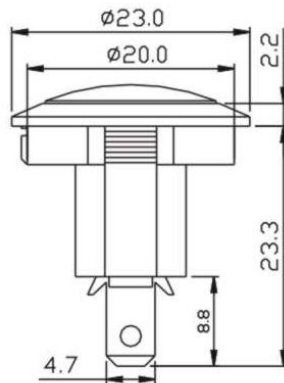
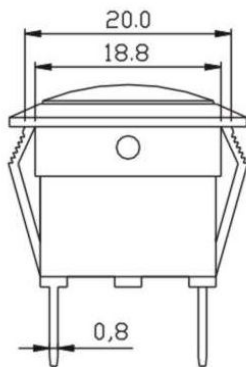
NIC2-13

Relevant technical parameters, the installation size chart

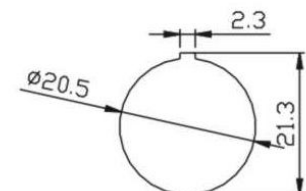
[Click to enter the Member Area](#)

Insulated Resistance	500VDC,50MΩ □
Dielectric Strength	1250VAC,1Min
Operating Temperature	T100
Electrical Life	10,000H

Terminal types	A
The shape of the type of	C



安装孔尺寸
Panel cut-out



X:安装面板厚度 < 3mm
X:Panel Thickness < 3mm

[Click to view Rocker Switch Model Description](#)

[Click to view Rotary Switch Model Description](#)

[Click to view Key Switch Model Description](#)

[Click to view Push Button Switch Model Description](#)

[Click to view Terminal Block Model Description](#)

[Click to view Indicator Light Model Description](#)

[Click to view AC Socket Model Description](#)

[Click to view Slide Switch Model Description](#)