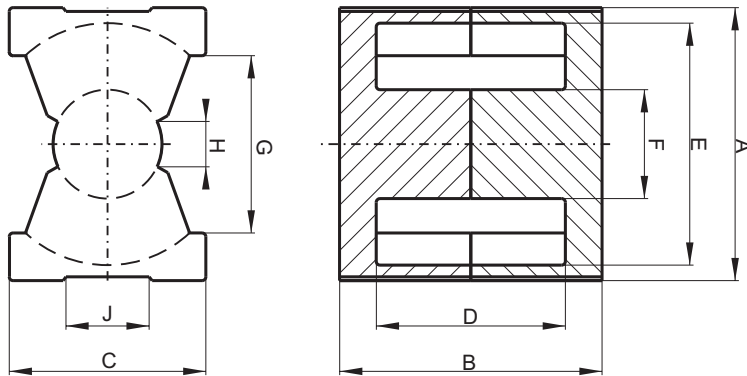


**DIMENSIONS**



(mm)	Nominal:	Tol.min.:	Tol.max.:
(A)	36.1	-0.6	+0.6
(B)	34.7	-0.25	+0.25
(C)	26.0	-0.5	+0.5
(D)	25.0	-0.3	+0.3
(E)	32.0	-0.5	+0.5
(F)	14.4	-0.25	+0.25
(G)	23.5 MIN.	---	---
(H)	6.0 MIN.	---	---
(J)	11.8 MIN.	---	---
<b>Eff. Parameters</b>			
<b>A<sub>e</sub> mm<sup>2</sup></b>	<b>A<sub>min</sub> mm<sup>2</sup></b>	<b>l<sub>e</sub> mm</b>	<b>V<sub>e</sub> mm<sup>3</sup></b>
190.0	162.0	86.1	16300

**INDUCTANCE**

<b>AI value (nH)</b>	<b>Test conditions</b>
Nominal: 4813 Minimum: 3610	10 kHz, 0.5 mT, 25°C

**CORE LOSSES**

<b>P<sub>i</sub> max</b>	<b>Test conditions</b>
98 mW/cm <sup>3</sup> (1.6 W/set) 613 mW/cm <sup>3</sup> (10 W/set)	100 kHz, 100 mT, 100°C 100 kHz, 200 mT, 100°C

**MARKING**

No marking
------------

**NOTE**

<b>Spec. modification</b>	<b>Previous</b>	<b>Revised</b>
2005.06.22	B=34.49 MIN. F=14.61MAX. LOSSES:GENERAL R MATERIAL MARKING	A=34.45 MIN. F=14.65 MAX. LOSSES: DETAIL AS INDICATED NO MARKING