

# OLED 9.6" Blue Yellow

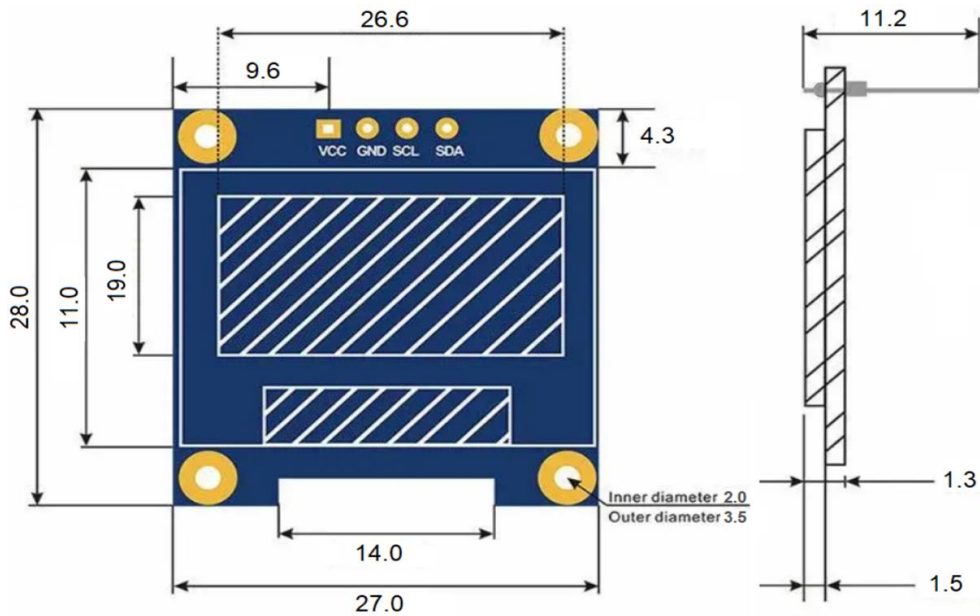
RCWL-0516 microwave radar sensor module Human body induction switch module Intelligent sensor

## Parameters:

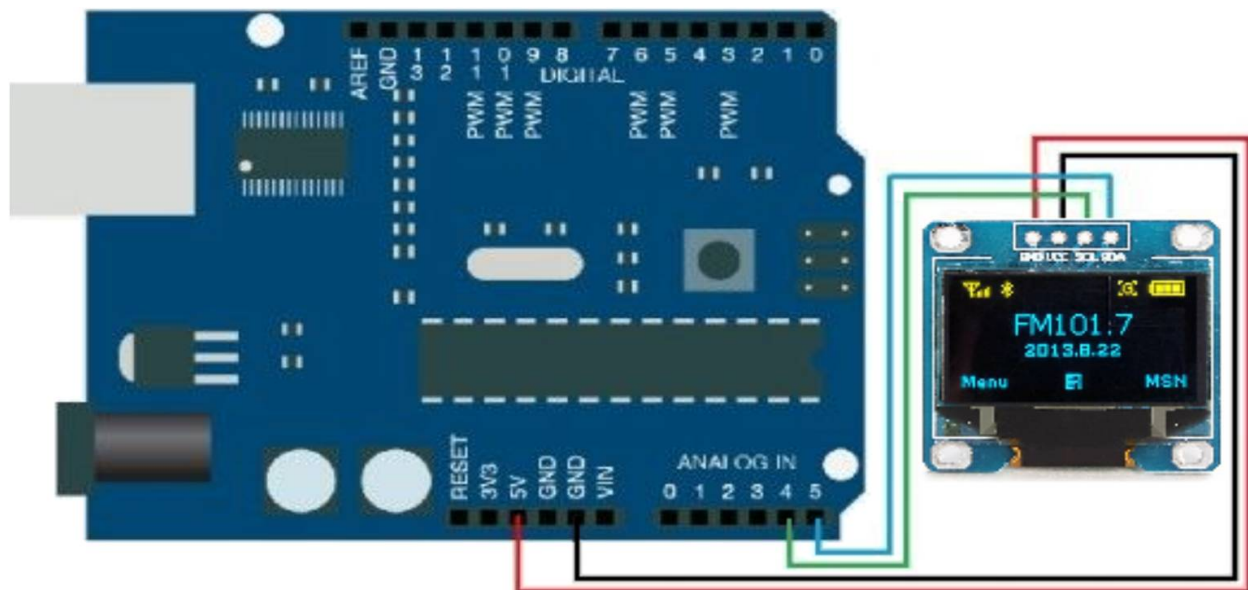
Interface: I2C, add= 3C  
GND: Power Ground  
VCC: 2.2V-5.5V  
SCL: CLK clock (High level 2.2V-5.5V)  
SDA: MOSI data (High level 2.2V-5.5V)

## Feature:

Color: Blue and Yellow LED  
Resolution: 128x64  
Power: 0.06W  
Wide power supply range: DC 3V-5V  
Temperature: -30°C to 70°C  
Dimension: 29.28 x 27.1 mm (LW)  
Compatible with 3.3V and 5V control chip I / O level  
OLED internal drive chip: SSD1306  
Viewing Area: 21.74\* 11.2mm  
Yellow has a high of 16 pixels



## Schematic:



**NOTE:**

First run an I2C\_scanner to check if an address can be found. If not a link must be made between pin 19 and 20 on the back of the PCB. See image below. Once the link is made rerun the scanner for the I2C address, should be 0x3C.

Download the libraries needed from the link.

Adafruit\_SSD1306-master [https://github.com/adafruit/Adafruit\\_SSD1306](https://github.com/adafruit/Adafruit_SSD1306)

Adafruit-GFX-Library-master <https://github.com/adafruit/Adafruit-GFX-Library>

