



ST82250 LANTEST KIT (NETWORK / MODULAR CABLE TESTER)



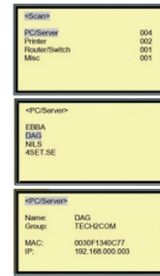
FEATURES

- CAN TEST THE CORRECT PIN CONFIGURATION OF 10 BASE-T CABLES, 10 BASE-2 CABLES, RJ45/RJ11 MODULAR CABLES, 356A, TIA-568A/568B AND TOKEN RING CABLES
- WITH REMOTE KIT, IT CAN REMOTELY TEST CABLE UP TO 1000ft AWAY
- AUTO AND MANUAL SCANS CAN BE SELECTED
- POWER : DC 9V BATTERY

ACCESSORY

- INCLUDES
- 1 MASTER BOX
- 1 REMOTE BOX
- 2 BNC ADAPTER CABLE (15cm)
- 1 BNC M/M ADAPTER
- 1 RJ45 MODULAR CABLE (15cm)
- 1 DELUXE CARRYING BAG

ST82253 LAN INSPECTOR

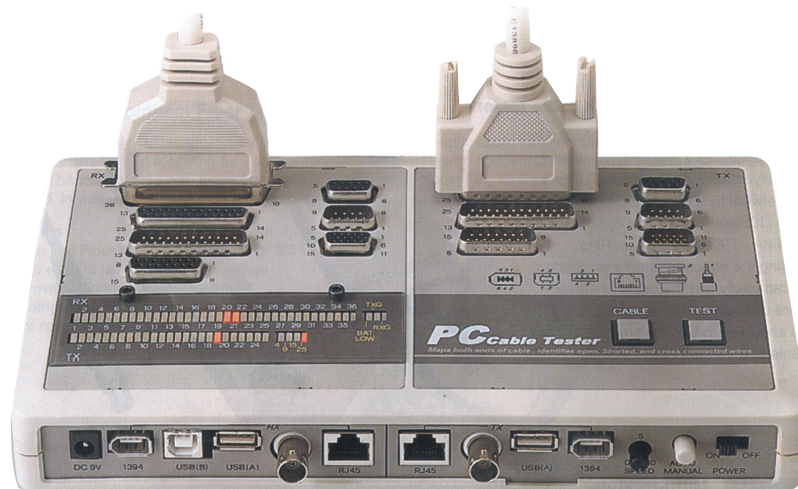


FEATURES

- ETHERNET 10/100, RJ-45 CONNECTION
- SCANS THROUGH 255 UNITS WITHIN THE SAME SUBNET
- PRESENTS NETBIOS, SNMP NAME, GROUP NAME, IP ADDRESS, MAC ADDRESS, AND ACTIVE SERVICES AS DHCP, HTTP, TELNET, SNMP, ROUTING AND PRINTING
- LCD DISPLAY
- AUTOMATIC POWER DOWN
- BATTERY : 9V X 1PCS
- DIMENSIONS : 180 X 80 X 25 mm
- WEIGHT : 200g (WITH BATTERY)

ST82260 PC CABLE TESTER (WITH USB/1394)

THE PC CABLE TESTER IS A STAND-ALONG TEST DEVICE, IT DESIGNED TO PROVIDE YOU TO TEST THE POPULAR USED PC DATA CABLES (OPTIONAL ADVANCED MODEL CAN TEST TWO MORE CABLES SUCH AS THE USB AND 1394) FOR IDENTIFIED THE WIRES CONNECTING STATUS-OPEN, SHORTED, CROSS, MISS-WIRE AND CONTINUITY WIRES .



FEATURES

- CAN TEST PRINTER CABLES, MONITOR CABLES, MODEM CABLES, MOUSE CABLES, GAME CABLES, USB/1394 CABLES, BNC COAX CABLES, RJ45 CABLES
- AUTO AND MANUAL SCANS CAN BE SELECTED

SPECIFICATION

- DISPLAY : TX-25 LEDS; RX-36 LEDS;
WIRES X 4 (FOR 4, 9, 15, 25)
- POWER : DC 9V 150mA POWER JACK 2.5Ø OR USE DC 9V BATTERY
- DIMENSION : 250 X 130 X 35 mm

INTERFACE PORTS

TX	RX
DB25 FEMALE	CENTRONICS 36 FEMALE
DB25 MALE	DB25 FEMALE DB25 MALE
DB9 FEMALE	DB9 FEMALE
DB9 MALE	DB9 MALE
HDB15 MALE	HDB15 FEMALE
DB15 MALE	DB15 FEMALE
BNC FEMALE	BNC FEMALE
RJ45 FEMALE	RJ45 FEMALE
USB (A)	USB (A) SOCKET
SOCKET	USB (B) SOCKET (OPTIONAL)
1394 SOCKET	1394 SOCKET (OPTIONAL MODEL)