



## D-Subminiature Connectors

### HOOD 09, 15, 25, 37, 50 PINS

YDxx P/C  
 No. of pins \_\_\_\_\_  
 Plastic \_\_\_\_\_  
 Chromate plated \_\_\_\_\_

YDAxx P/C

YDBxx P/C

YDCxx P/C  
 (09, 25 PINS)



**D**

### HOOD 09, 15, 25, 37, 50 PINS (THUMB SCREW)

YDLxx P/C  
 No. of pins \_\_\_\_\_  
 Plastic \_\_\_\_\_  
 Chromate plated \_\_\_\_\_

YDLAxx P/C

YDLBxx P/C

METAL HOOD  
 09, 15, 25, 37, 50 PINS  
 YDxx D



**D**

**D**

### HOOD SCREWS

YDS xxx



026



031



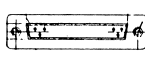
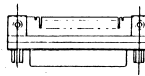
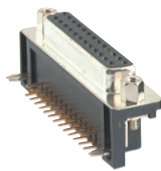
**D**

### RIGHT ANGLE TYPE 09, 15, 25, 37 PINS

#### SCREW LOCK TYPE

#### RIVET LOCK TYPE

**F**



Plug : YFRxxP  
 Socket : YFRxxS  
 L= 8.10mm No. of pins \_\_\_\_\_

Plug : YFTxxP  
 Socket : YFTxxS  
 L= 8.10mm No. of pins \_\_\_\_\_

Plug : YFRMxxP  
 Socket : YFRMxxS  
 L=10.30mm No. of pins \_\_\_\_\_

Plug : YFTMxxP  
 Socket : YFTMxxS  
 L=10.30mm No. of pins \_\_\_\_\_

Plug : YFRL xxP  
 Socket : YFRL xxS  
 L=14.84mm No. of pins \_\_\_\_\_

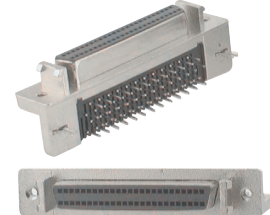
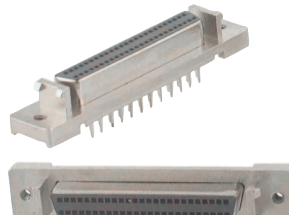
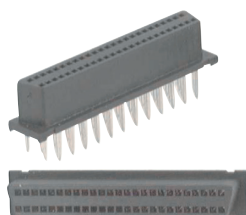
Plug : YFTL xxP  
 Socket : YFTL xxS  
 L=14.84mm No. of pins \_\_\_\_\_

### SCSI-II D-SUB TYPE 50, 68 PINS

#### PLASTIC TYPE

#### STRAIGHT TYPE

#### RIGHT ANGLE TYPE



Socket : YFW xxS  
 No. of pins \_\_\_\_\_

Socket : YFWS xxS  
 No. of pins \_\_\_\_\_

Socket : YFWR xxS  
 No. of pins \_\_\_\_\_

**F**