

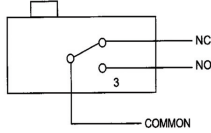


Micro Switches

FEATURES

- High temperature type, max 120°C.
- Wide choice of heads and actuators.
- Long life services.

CIRCUITRY



RATING (CONTACT)

5 A	125 or 250 V AC
0.5A	125 or 250 V DC

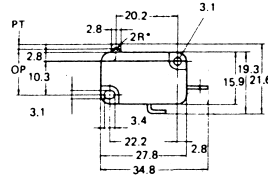
CHARACTERISTICS

Operating Speed	0.01mm to 1m/sec
Operating Frequency	Mechanically:600 operations/min.
	Electrically:60 operations/min.
Contact Resistance	15m Ω max.(initial)
Insulation Resistance	100M Ω min. (at 500 V DC)
Dielectric Strength	1000 V AC, 50/60 Hz for 1 minute between non-continuous terminals
	2000 V AC, 50/60 Hz for 1 minute between current-carrying part and ground
Vibration	Malfunction durability: 10 to 55 Hz; 1.5mm double amplitude
Shock	Mechanical durability: Approx. 1,000 m/sec ² (approx. 100 G's)
	Malfunction durability:Approx. 300 m/sec ² (approx. 30 G's)
Ambient Operating Temperature	General purpose type:-25°C to + 80°C
	High temperature type:25°C to 120°C
Humidity	General purpose type:85% RH max
	Sealed type:95% RH
Service Life	Mechanically: 5,000,000 operations min.
	Electrically: 500,000 operations min.

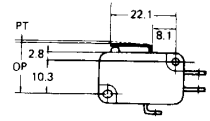
OPERATING CHARACTERISTICS

	B180A	B180B	B180D	B180E	B180F	B180K	B180L	B180M	B180N	B180P
OF MAX	110g	160g	110g	70g	80g	160g	40g	80g	160g	280g
RF MIN	50g	50g	50g	20g	20g	50g	20g	20g	50g	50g
PT MAX	1.2mm	1.6mm	1.2mm	4.0mm	4.0mm	1.6mm	4.0mm	4.0mm	1.6mm	1.6mm
OT MIN	1.0mm	0.8mm	1.0mm	1.6mm	1.6mm	0.8mm	1.6mm	1.6mm	0.8mm	0.8mm
DT MAX	0.4mm	0.6mm	0.4mm	1.5mm	1.5mm	0.6mm	1.5mm	1.5mm	0.6mm	0.6mm
OP	14.70±0.4	15.20±0.5	14.7±0.4	15.20±1.2	20.70±1.2	15.20±0.5	15.20±1.2	18.70±1.2	20.70±0.6	20.70±0.6

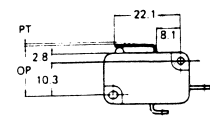
B180A
MICRO SWITCH
(SPST) ON-OFF



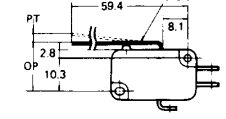
B180K
MICRO SWITCH
(SPDT) ON-ON



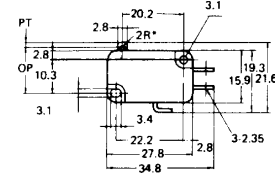
B180B
MICRO SWITCH
(SPST) ON-OFF



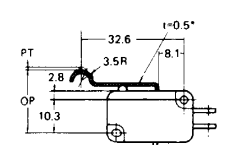
B180L
MICRO SWITCH
(SPDT) ON-ON



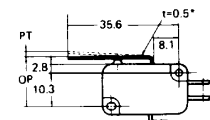
B180D
MICRO SWITCH
(SPDT) ON-ON



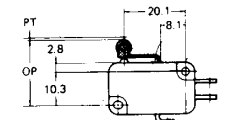
B180M
MICRO SWITCH
(SPDT) ON-ON



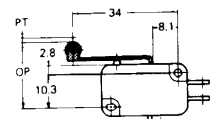
B180E
MICRO SWITCH
(SPDT) ON-ON



B180N
MICRO SWITCH
(SPDT) ON-ON



B180F
MICRO SWITCH
(SPDT) ON-ON



B180P
MICRO SWITCH
PLASTIC ROLLER
(SPDT) ON-ON

