



keyestudio



Ks0203 keyestudio Steam Sensor

Introduction:

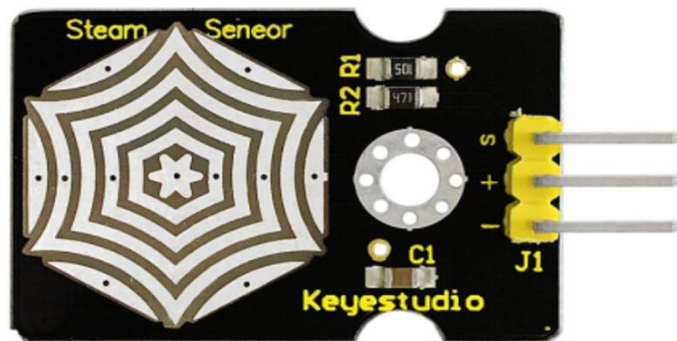
Steam sensor is an analog sensor and can be made as a simple rainwater detector and liquid level switch. When humidity on the face of this sensor rises, output voltage will increase.

Specification:

Supply Voltage: 3~5V

Current: >20mA

Interface: Analog



More info at KEYESTUDIO

https://wiki.keyestudio.com/Ks0203_keyestudio_Steam_Sensor

Copyright © 2008-2020 keyestudio.com. All Rights Reserved

<http://www.keyestudio.com>



keyestudio

