

KIB-108 Series

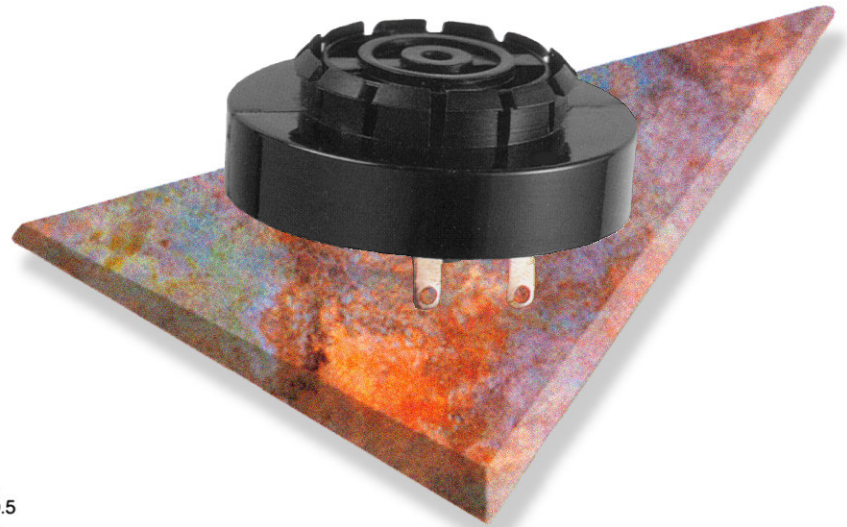
PIEZO BUZZER

Material of Case: Nylon

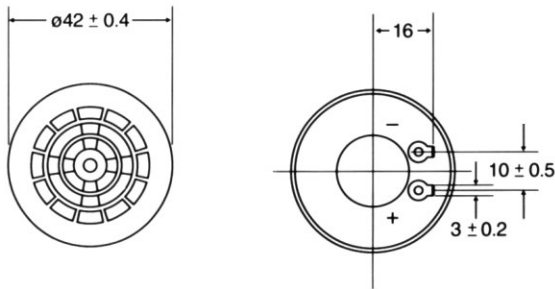
Colour: Black

Operating Temperature: -20°C $+80^{\circ}\text{C}$

Storage Temperature: -30°C $+90^{\circ}\text{C}$

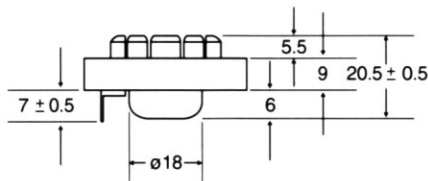


DIMENSIONS (in mm)



Top View

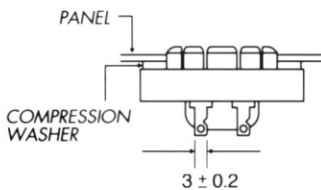
Bottom View



Side View

This portion snaplocks into panels 0.8 to 3.2mm thick using appropriate compression washer 27mm dia. panel hole required.

Typical Panel Installation



Mounting — Panel hole 27 ± 0.1 mm diameter should be punched from the back side so that locking fingers enter on the slightly rounded edge of the hole. Assemble proper compression washer and press into panel hole until locking fingers snap over hole edge. Installation pressure should be applied only at the circumference of the device.

Electrical Specifications

Model No.	10S3240
Operating Voltage (VDC)	1-28
Rated Voltage (VDC)	24
Max. Current at Rated Voltage (mA)	15
Frequency (KHz)	2.9 ± 0.5
Min. Sound Pressure at Rated Voltage (dBA/30cm)	85
Tone	SINGLE
Pulse Rate at Rated Voltage (Pulse/Sec)	NIL
Terminal	PLATE

CHARACTERISTICS

10S3240

