

KE2055 KEYES film pressure sensor module

Parameters:

Working Voltage: 3.3 ~ 5VDC

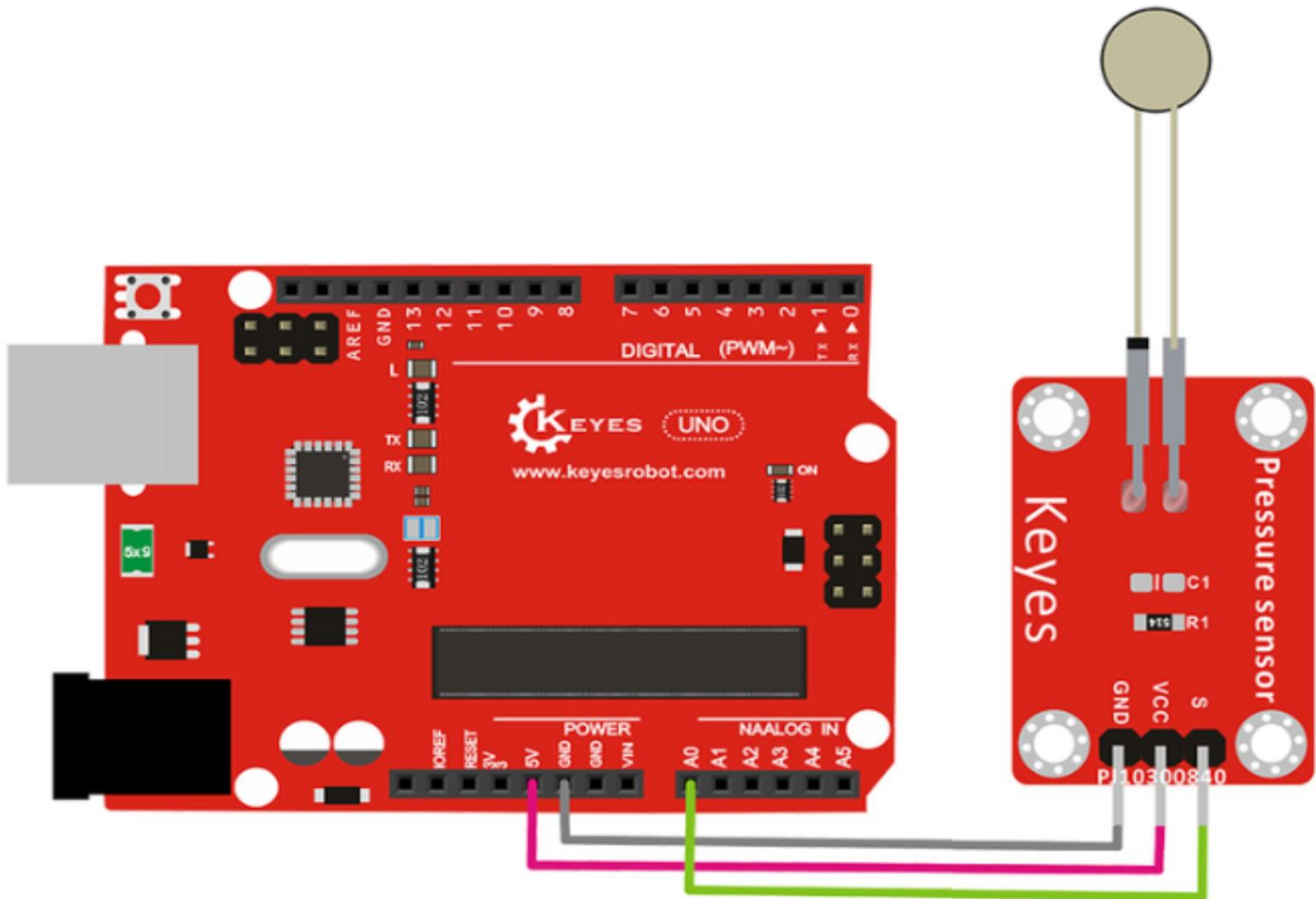
Range : 0-0.5KG

Colour: Red

Size: 66x22x9mm.



PINOUT Instruction:



Shenzhen Keyi Interactive Robot Co., Ltd.

Sample Code:

```
int s_pin = A0;
void setup()
{
  Serial.begin(9600);
  pinMode(s_pin,INPUT);
}

void loop()
{
  Serial.println(analogRead(s_pin));
  delay(500);
}
```

Result:

Done uploading the above code, open the serial monitor on Arduino IDE. Then, press the sensor with your hand, the value shown on the monitor is increasing. So this sensor works normally.

