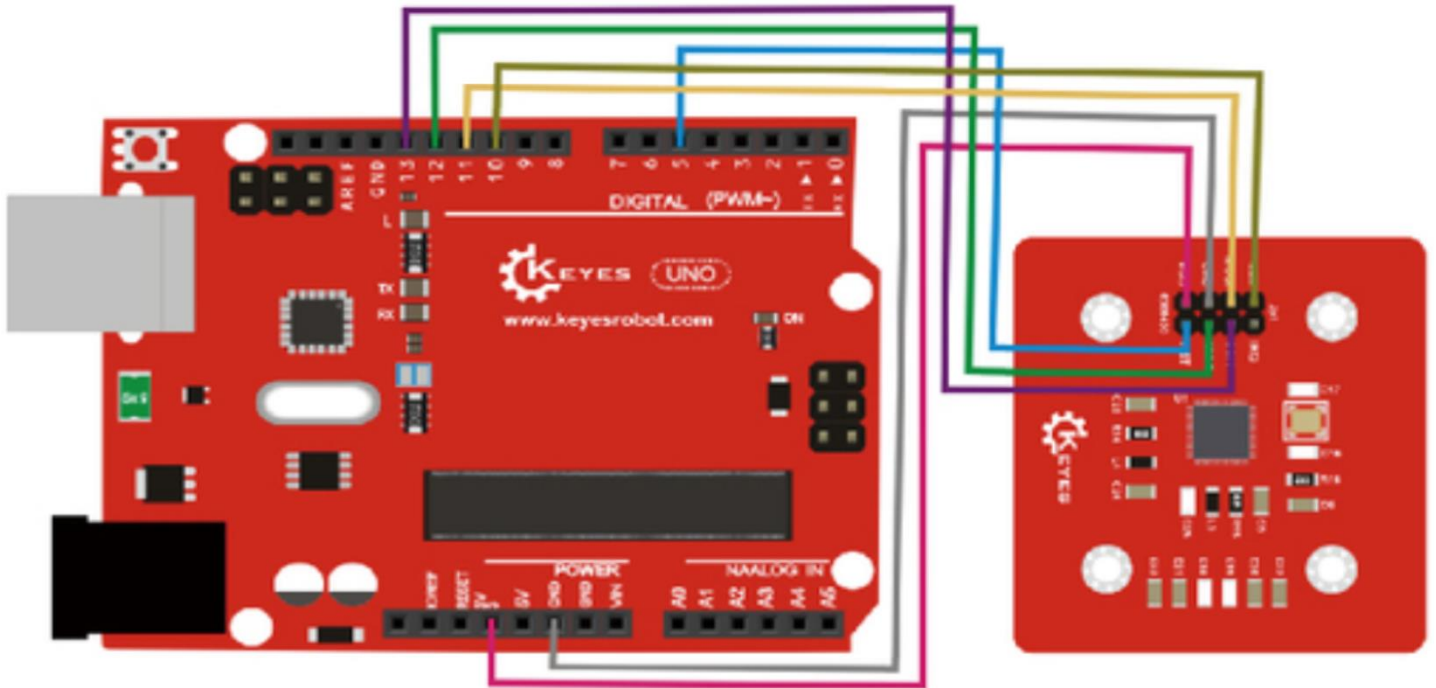


KE0106 KEYES RC522 RFID radio frequency IC card induction module



Connection Diagram:

NSS - D10, MOSI - D11
RST - D5, MISO - D12, SCK - D13



Shenzhen Keyi Interactive Robot Co., Ltd.

Sample Code: http://www.mantech.co.za/Datasheets/Products/KE0106_TEST_CODE.zip

Library of SPI: <https://github.com/miguelbalboa/rfid>

Result:

In this experiment, when the IC card gets close, RFID module writes data into the IC card, then reads out the data and displays it on the monitor window. As below picture shown:

