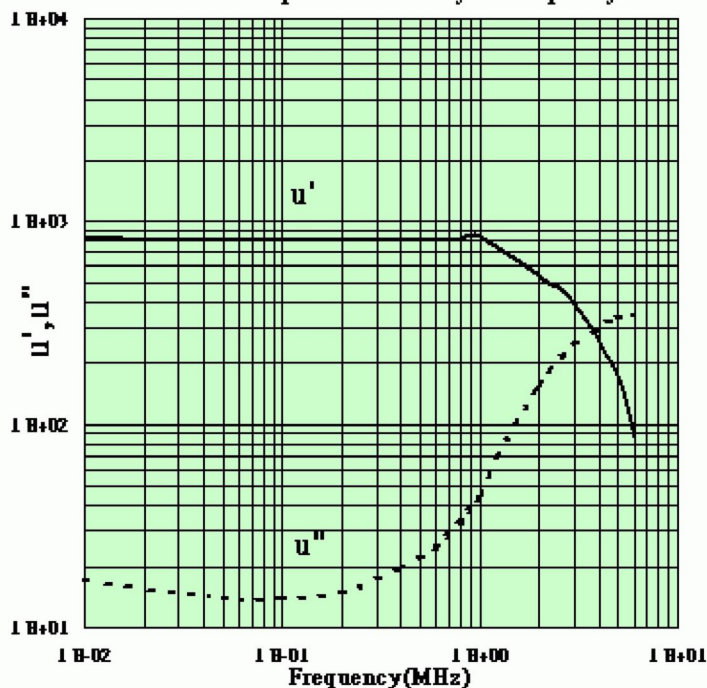


K₃ Material

K₃ Material Specifications

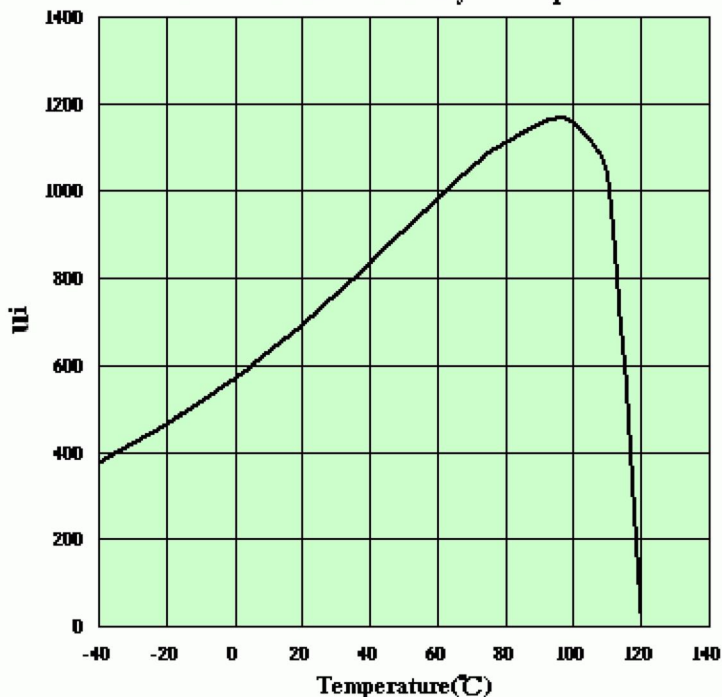
Property	Unit	Symbol	Value
Initial Permeability (@B < 0.25 mT)		μ_i	800
Saturation Magnetic Flux Density (@Field Strength)	mT A/m	B _s H	250 2400
Remanent Flux Density	mT	B _r	140
Coercive Force	A/m	H _c	28
Relative Loss Factor (@Frequency)	10^{-4} MHz	$\tan \delta / \mu_i$	30 0.1
Temperature Factor of Initial Permeability(20~70°C)	$10^{-4}/^{\circ}\text{C}$	$\alpha \mu_{ir}$	15
Curie Temperature	$^{\circ}\text{C}$	T _c	>110
Electrical Resistivity	$\Omega\cdot\text{m}$	ρ_v	10^4

Material Complex Permeability vs. Frequency



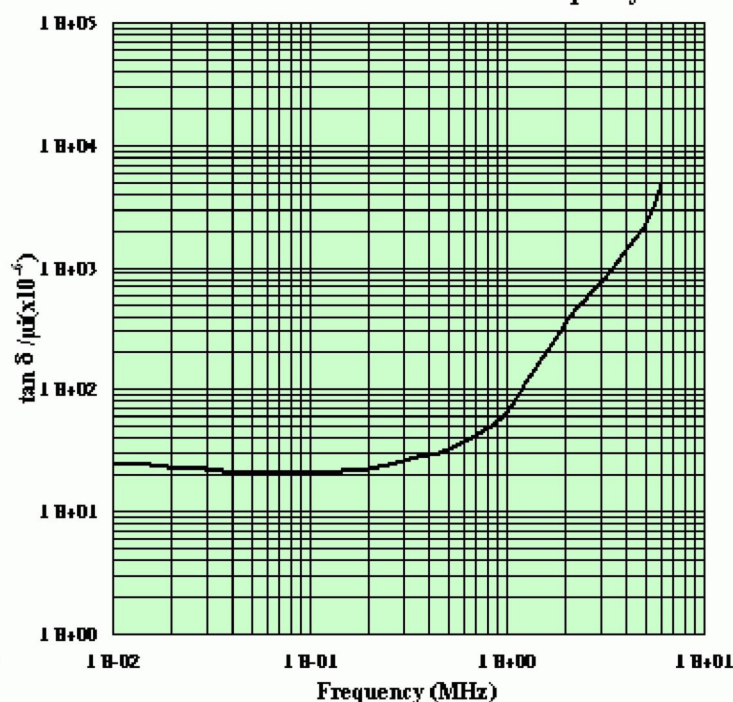
Measured on a 25/5/15mm toroid using the HP 4284A and the HP 4291B

Material Initial Permeability vs. Temperature



Measured on a 25/5/15mm toroid at 10KHz@B_m < 0.25 mT using the HP 4284A

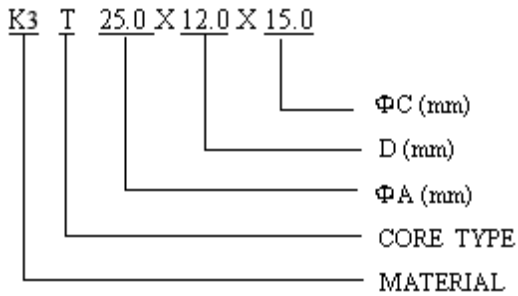
Material Relative Loss Factor vs. Frequency



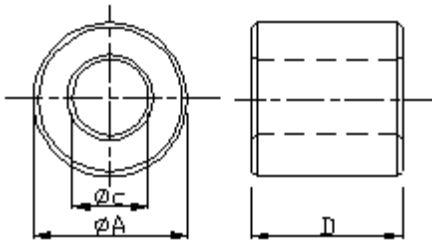
Measured on a 25/5/15mm toroid using the HP 4284A and the HP 4291B

▼T SERIES(TOROIDAL CORES)

1.ORDERING CODE



2.SHAPES



3.DIMENSIONS

NO.	FERRICO PART NO.	IMPEDANCE(Ω)TYP.		NO.	FERRICO PART NO.	IMPEDANCE(Ω)TYP.	
		25 MHz	100 MHz			25 MHz	100 MHz
1	- T 1.9X0.5X1.0			60	K3 T 16.0X6.0X9.0	32	70
2	- T 2.4X1.0X1.0			61	K3 T 16.0X8.0X10.0	34	75
3	- T 2.5X1.2X1.0			62	K3 T 16.0X8.0X12.0	25	62
4	- T 2.54X0.99X1.49			63	K3 T 16.0X12.0X9.0	50	95
5	- T 2.54X1.27X1.27			64	K3 T 16.0X13.0X8.0	68	108
6	- T 2.6X0.7X1.2			65	K3 T 16.0X13.0X9.0	57	98
7	- T 3.0X2.0X1.0			66	K3 T 16.0X13.5X12.0	35	70
8	- T 3.03X2.0X1.0			67	K3 T 16.0X15.0X9.0	65	97
9	- T 3.05X1.52X1.78			68	K3 T 17.5X6.35X9.5	35	70
10	- T 3.15X1.0X1.8			69	K3 T 17.5X11.0X9.5	52	88
11	- T 3.43X1.27X1.78			70	K3 T 17.5X12.7X9.5	57	100
12	- T 3.5X1.3X1.8			71	K3 T 17.5X14.5X9.5	60	105
13	- T 3.5X3.0X1.2			72	K3 T 18.0X6.0X10.0	30	65
14	- T 3.51X3.26X1.6			73	K3 T 18.0X7.0X10.0	36	75
15	- T 3.94X1.27X2.24			74	K3 T 18.0X10.0X10.0	46	85
16	- T 3.94X1.27X1.78			75	K3 T 18.0X6.0X12.0	27	66
17	- T 3.94X2.01X2.01			76	K3 T 18.45X10.25X9.75	52	94
18	K3 T 4.0X1.3X2.2	15	55	77	K3 T 18.7X15X12.7	46	85

19	K3 T 4.0X2.6X1.8	23	62	78	K3 T 19.0X8.0X12.0	35	72
20	K3 T 4.0X3.0X1.5	27	67	79	K3 T 19.0X10.0X10.0	50	88
21	K3 T 4.0X3.0X2.0	20	40	80	K3 T 20.0X5.0X10.0	32	69
22	K3 T 4.40X1.20X1.80	15	55	81	K3 T 20.0X10.0X10.0	51	95
23	K3 T 4.95X4.5X1.0	48	75	82	K3 T 20.0X10.0X12.0	40	75
24	K3 T 6.0X3.0X3.0	22	60	83	K3 T 21.0X6.0X12.7	28	70
25	K3 T 7.3X4.3X3.3	30	71	84	K3 T 21.0X6.0X13.2	27	67
26	K3 T 7.6X4.2X3.6	32	66	85	K3 T 21.2X6.5X12.7	32	68
27	K3 T 8.0X3.0X4.0	24	60	86	K3 T 22.0X5.0X14.0	25	62
28	K3 T 8.0X4.0X4.0	27	65	87	K3 T 22.0X8.0X14.0	31	70
29	K3 T 9.0X5.0X4.5	30	67	88	K3 T 22.0X10.0X10.0	62	104
30	K3 T 9.0X3.0X5.0	23	60	89	K3 T 22.0X10.0X14.0	40	76
31	K3 T 9.0X8.0X5.0	39	81	90	K3 T 22.0X12.0X13.7	45	84
32	K3 T 9.1X4.6X5.0	27	62	91	K3 T 22.0X13.0X14.0	50	88
33	K3 T 9.5X4.8X5.0	27	65	92	K3 T 22.0X14.0X10.0	78	122
34	K3 T 10.0X4.0X6.0	23	60	93	K3 T 22.5X10.0X13.5	43	80
35	K3 T 10.0X5.0X5.0	30	67	94	K3 T 23.8X9.5X12.7	46	82
36	K3 T 10.0X5.0X7.0	20	59	95	K3 T 23.8X14.0X11.4	78	128
37	K3 T 10.3X10.2X5.8	47	85	96	K3 T 25.0X5.0X15.0	27	65
38	K3 T 10.5X10.0X7.0	32	75	97	K3 T 25.0X6.35X15.0	32	72
39	K3 T 11.0X9.0X5.0	52	94	98	K3 T 25.0X10.0X15.0	42	81
40	K3 T 11.8X8.0X7.8	28	67	99	K3 T 25.0X12.0X15.0	48	87
41	K3 T 12.0X3.0X6.0	22	60	100	K3 T 25.0X15.0X15.0	56	96
42	K3 T 12.0X4.0X7.5	22	61	101	K3 T 28.0X13.0X16.0	55	95
43	K3 T 12.0X7.0X5.6	38	76	102	K3 T 29.1X13.8X19.0	44	86
44	K3 T 12.0X10.0X7.5	37	78	103	K3 T 31.0X7.0X19.0	35	72
45	K3 T 12.7X6.4X7.9	30	66	104	K3 T 31.0X10.0X19.0	42	76
46	K3 T 13.0X6.0X7.0	33	70	105	K3 T 31.0X16.0X19.0	63	102
47	K3 T 13.0X10.0X7.0	47	85	106	K3 T 38.1X12.7X19.0	65	110
48	K3 T 13.0X12.5X7.0	56	98	107	K3 T 40.0X12.5X27.0	42	81
49	K3 T 14.0X5.0X7.0	27	65	108	K3 T 40.0X15.0X27.0	52	106
50	K3 T 14.0X5.0X9.0	23	58	109	K3 T 43.5X13.0X34.0	30	78
51	K3 T 14.0X5.0X10.0	21	62	TOLERANCE IN GENERAL			
52	K3 T 14.0X8.0X10.0	28	63	Under 6.0 ± 0.3			
53	K3 T 14.2X10.2X6.35	60	101	Under 18.0~6.0 ± 0.5			
54	K3 T 14.2X5.0X7.0	30	65	Under 24.0~18.0 ± 0.6			
55	K3 T 14.5X5.5X8.5	27	65	Under 30.0~24.0 ± 0.8			
56	K3 T 14.5X8.0X10.0	27	65	Under 40.0~30.0 ± 1.5			
57	K3 T 15.0X12.0X10.5	37	78				
58	K3 T 16.0X4.8X9.0	55	90				
59	K3 T 16.0X5.0X10.0	25	61				

REMARK:1.TOLERANCE CAN BE MODIFIED TO FIT SPECIFIED APPLICATION
 2.OTHER SIZES AND MATERIAL ARE AVAILABLE UPON REQUEST