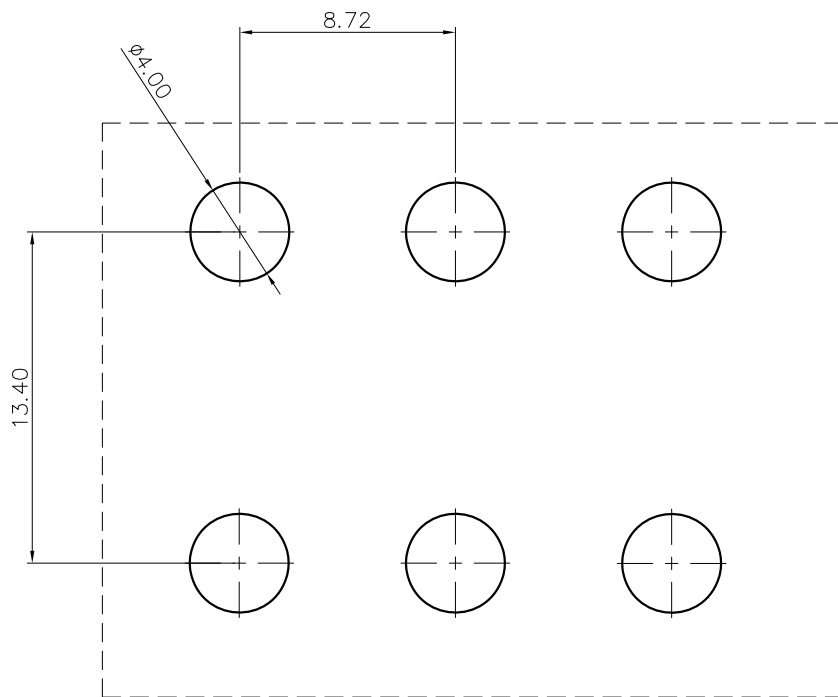
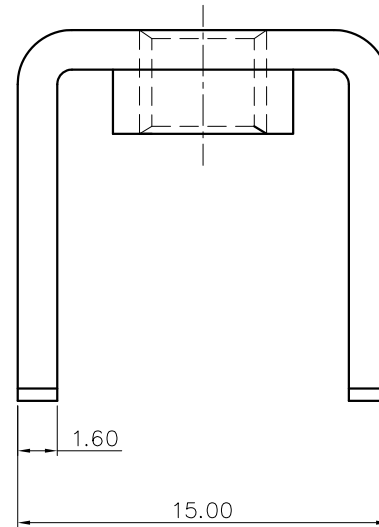
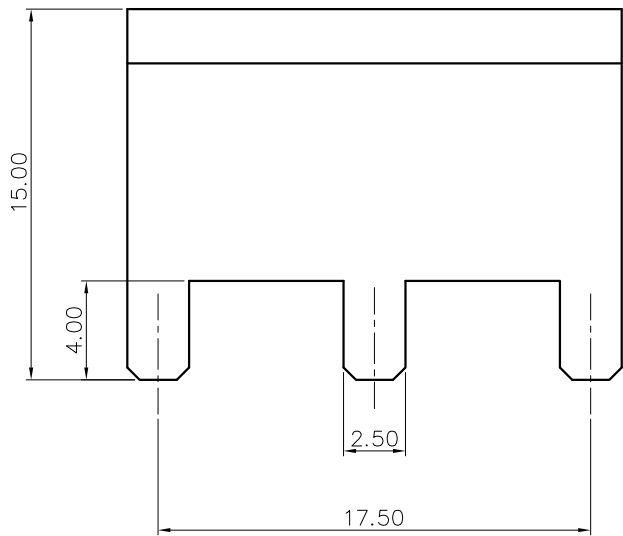


REVISION RECORD				
REV	ECN	DESCRIPTION	DRFT	DATE



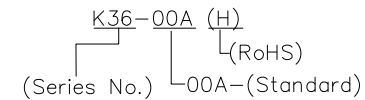
PCB LAYOUT

NOTES:

- UL Standard
- 1.Rated Current: 115A
- 2.Torque Value : M6 , 15.48Lb.in
- 3.Dimension shall be interpreted per ASME Y14.5-2009
- 4.Undimensioned tolerances:

Pitch range in mm		Nominal dimension range in mm					Tolerances	
To	Over	To	Over	To	Over	0.1/10		
6	10	30	60	100	150		$\pm 2'$	
± 0.15	± 0.20	± 0.30	± 0.50	± 0.70	± 1.00	± 1.30		

5.RoHS Compliance



DETACHED LISTS	PART NO.:	宁波高松电子有限公司 NINGBO DEGSON ELECTRICAL CO., LTD			
	APPD:	NAME: K36-00A(H)			
	CHKD:	TITLE: CUSTOMER DRAWING			
	DRFT:	DRAWING NO.:		REV	DO
		DO NOT SCALE DRAWING		SHEET	1/1
		MM (INCH)		SCALE	1:1