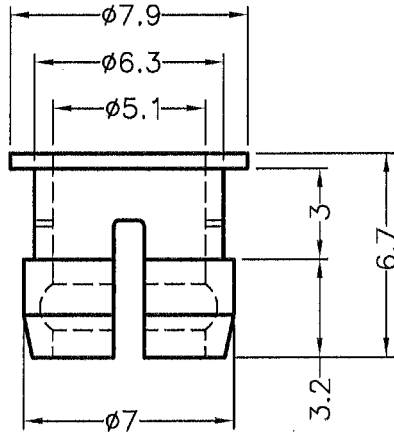
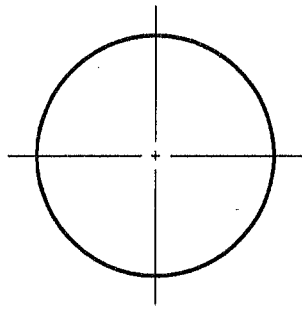
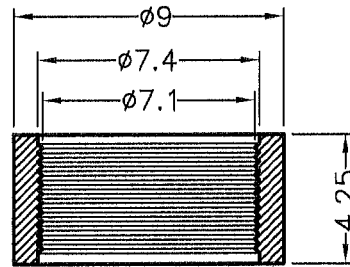
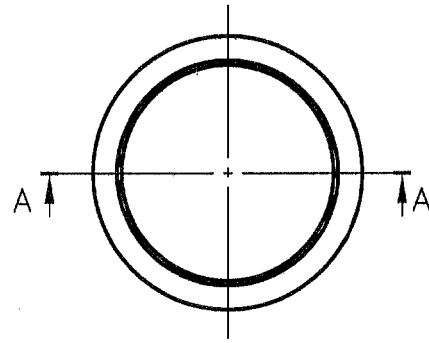


DIM.	TOL
5mm DOWN	±0.2
5~20mm	±0.3
20~40mm	±0.4
40~60mm	±0.5
60~100mm	±0.8
100mm UP	±1.0

REVISIONS			
REV	DESCRIPTION	DATE	BY



LED5-2A




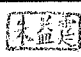
SECTION A-A

LED5-2B

HOLE IN CHASSIS: $\phi 6.4$
CHASSIS THICKNESS 3.0

NOTE: All measurement does not include gate which raises under 0.3mm.



 <p>康揚企業股份有限公司 KANG YANG HARDWARE ENTERPRISE CO., LTD. 康揚塑膠(東莞)有限公司 KANG YANG PLASTIC(DONG GUAN) CO., LTD. 康哲電腦配件(吳江)有限公司 KANG CHE COMPUTER COMPONENTS(WUJIANG) CO., LTD.</p>		TITLE	LED HOLDER	SPEC. DWG.	
		MATERIAL	NYLON 66 UL94V-2	DATE	2001.03.01
		FINISH		DRAWN	AMY
		COLOR	BLACK	CHECK	
PART NUMBER	LED5-2	DRAWING NUMBER	LED5-2H	UNLESS OTHERWISE SPECIFIED TOLERANCE	SEE ABOVE
SIZE	A4	SCALE	4:1	UNIT	mm
		REV	C	APPROVED	