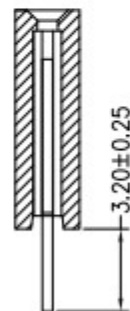
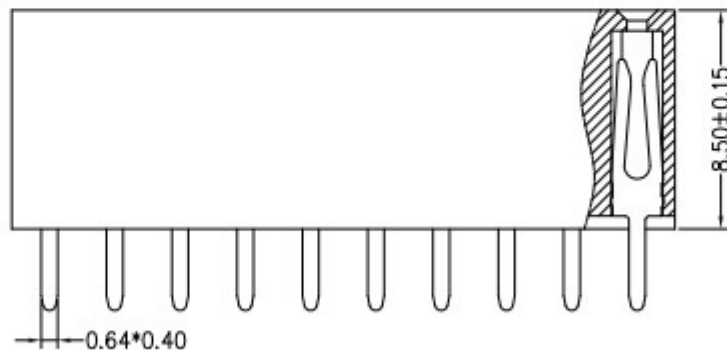
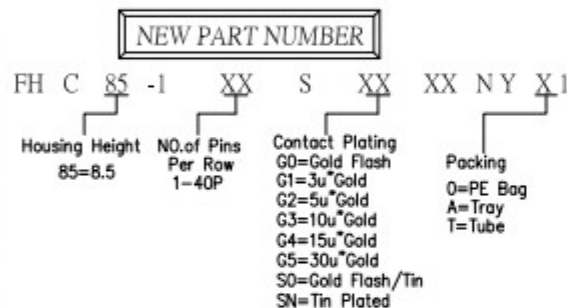
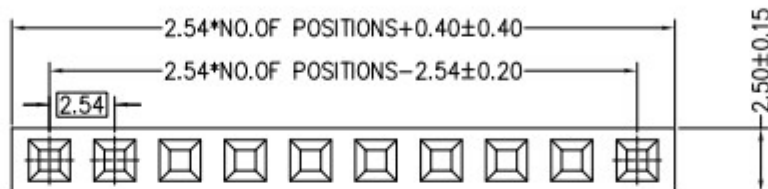
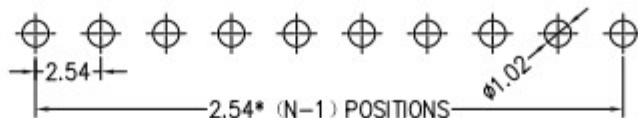


NOTES:

Voltage Rating:100V,AC/DC
 Current Rating:3.0 AMP
 Dielectric Withstand Voltage:1000V,AC/Minute
 Contact Voltage:20 mΩ Max
 Insulation Voltage:1000 mΩ Min
 Operation Temperature:-40°C to +105°C
 Insulator Material:Polyester,UL94 V-0
 Contact Material:Brass
 Contact Plating:Au or Sn Plated on Nickel Overall

Recommended P.C.B Layout
 P.C.B Board Tolerance±0.05



REV	DATE	MODIFICATION DESCRIPTION	CHANGE	OPERATION		DRAW	Helen	2011/04/18
				X.X	±0.40			
				X.XX	±0.25	DESIGN	Jenny	2011/04/18
				X.XXX	±0.15	CHECK	Franck	2011/04/18
				Angle	±3°	APPROVE	Steven	2011/04/18
				DIM	TOL			

LPI

深圳市起德电子科技有限公司
 SHEN ZHEN QIDE ELECTRONIC TECHNOLOGY CO.,LTD

PART NO.	FHC85-1XXS000NYX1	UNIT	mm
TITLE	2.54mm Female Header H=8.5,Single Row,180DP	SCALE	1:1
Customer NO.	---	SHEET	1/1
		PROJ.	