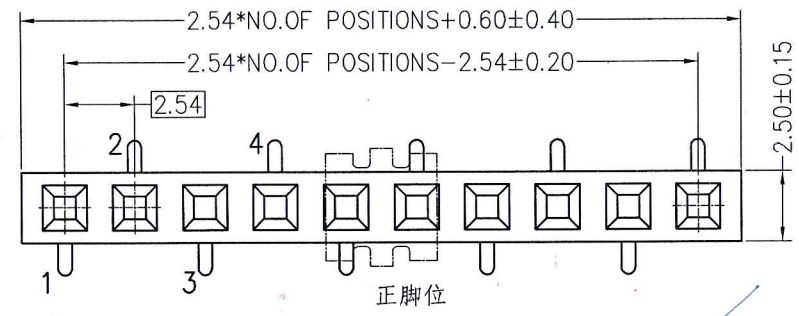
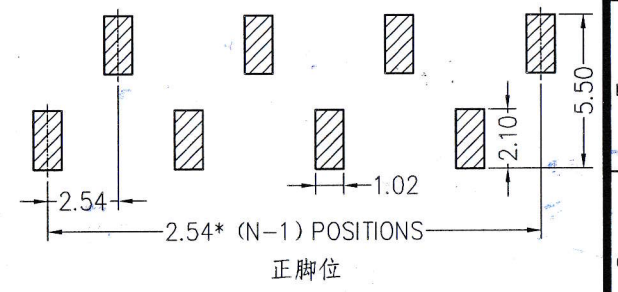


NOTES:

- Voltage Rating:100V,AC/DC
- Current Rating:3.0 AMP
- Dielectric Withstand Voltage:1000V,AC/Minute
- Contact Voltage:20 mΩ Max
- Insulation Voltage:1000 mΩ Min
- Operation Temperature:-40°C to +105°C
- Insulator Material:Polyester,UL94 V-0
- Contact Material:Brass
- Contact Plating:Au or Sn Plated on Nickel Overall



Recommended P.C.B Layout  
P.C.B Board Tolerance±0.05



NEW PART NUMBER

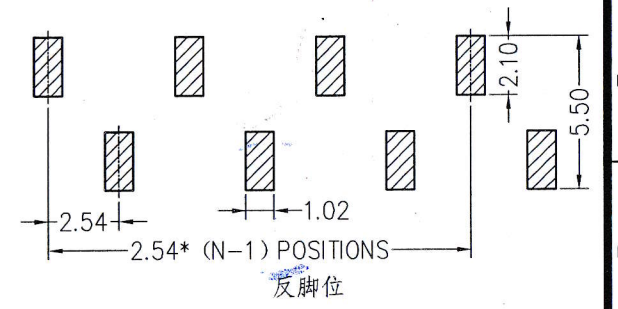
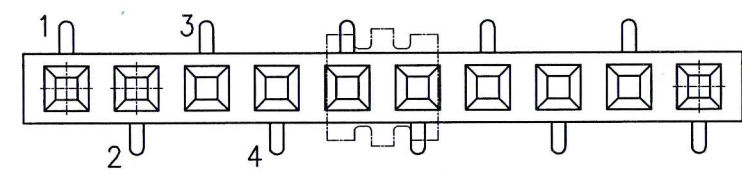
FH C 50 -1 XX M XX XXNU XX

Housing Height  
50=5.00

NO.of Pins  
Per Row  
1-40P

Contact Plating  
G0=Gold Flash  
G1=3u"Gold  
G2=5u"Gold  
G3=10u"Gold  
G4=15u"Gold  
G5=30u"Gold  
S0=Gold Flash/Tin  
SN=Tin Plated

Packing  
O=PE Bag  
A=Tray  
T=Tube



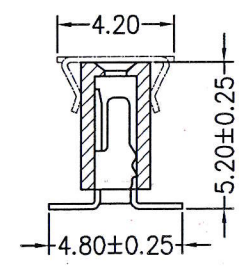
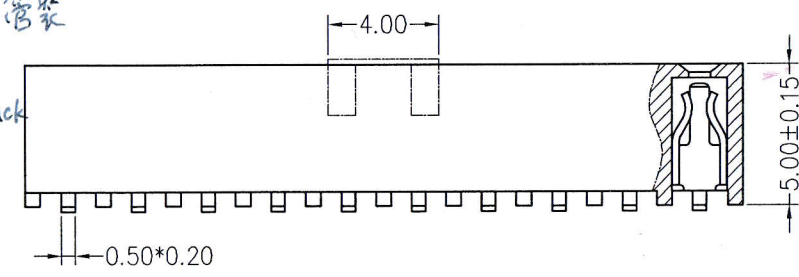
FHC50-140MG0DBNUT1

2.54排母 型高5.0 1x40P 正脚位 管装

SMD Female connector 2.54mm H:5.0mm

1x40P TYPE 1 Pins Positions tube pack

Sign:



				OPERATION		DRAW	Helen	2011/04/18	深圳市起德电子科技有限公司 SHEN ZHEN QIDE ELECTRONIC TECHNOLOGY CO.,LTD		UNIT	mm
				X.X	±0.40	DESIGN	Jenny	2011/04/18			PART NO.	FHC50-1XXMXXXXNUX
				X.XX	±0.25		CHECK	Franck	2011/04/18	TITLE	2.54mm Female Header H=5.0,Single Row,180°SMT	SHEET
				X.XXX	±0.15	APPROVE		Steven	2011/04/18	Customer NO.	---	PROJ.
REV	DATE	MODIFICATION DESCRIPTION	CHANGE	DIM	TOL							