

低損失超高速ダイオード

LOW LOSS SUPER HIGH SPEED RECTIFIER

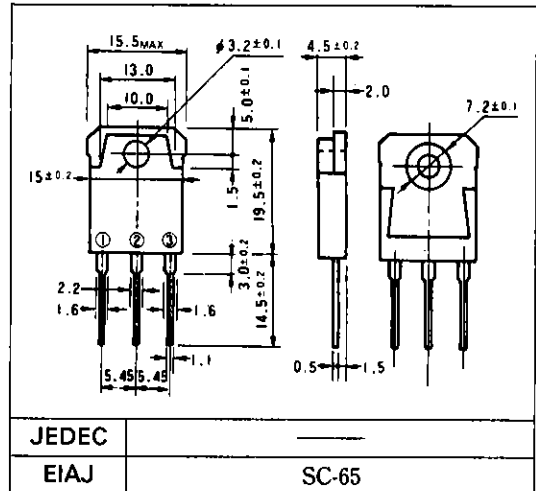
■特長：Features

- 低 V_F
Low V_F
- スイッチングスピードが非常に速い
Super high speed switching.
- プレーナー技術による高信頼性
High-reliability by planer design.

■用途：Applications

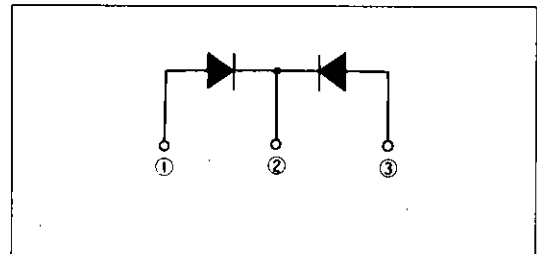
- 高速電力スイッチング
High speed power switching.

■外形寸法：Outline Drawings



■電極接続

Connection Diagram



■定格と特性：Maximum Ratings and Characteristics

●絶対最大定格：Absolute Maximum Ratings

| Items | Symbols | Conditions | Ratings | Units |
|---|-----------|---|------------|------------------|
| ピーク繰り返し逆電圧 Repetitive Peak Reverse Voltage | V_{RRM} | | 200 | V |
| 平均出力電流 Average Output Current | I_o | 方形波, duty = 1/2, $T_c = 115^\circ\text{C}$ Square wave | 20* | A |
| サージ電流 Surge Current | I_{FSM} | 正弦波 Sine wave 10ms | 100 | A |
| 接合温度 Operating Junction Temperature | T_j | | -40 ~ +150 | $^\circ\text{C}$ |
| 保存温度 Storage Temperature | T_{stg} | | -40 ~ +150 | $^\circ\text{C}$ |

*センタータップ平均出力電流

* average forward current of centertap full wave connection

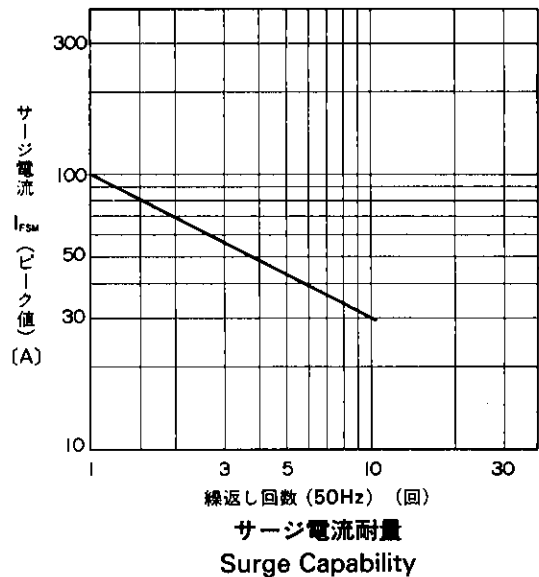
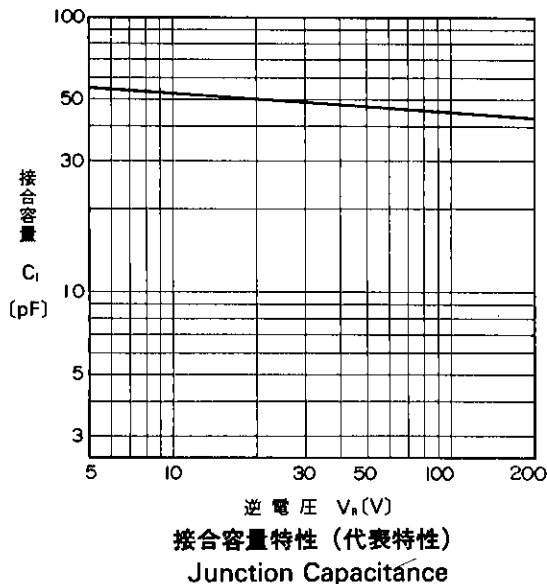
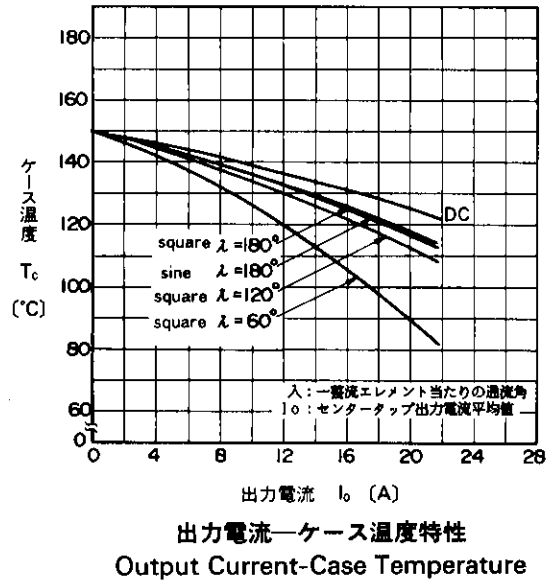
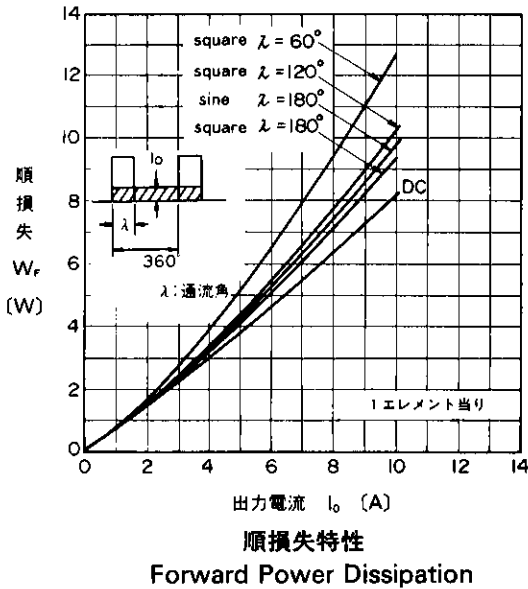
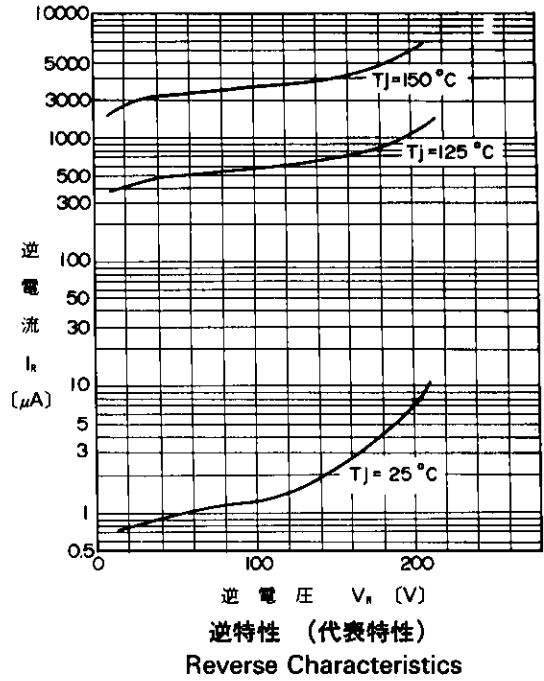
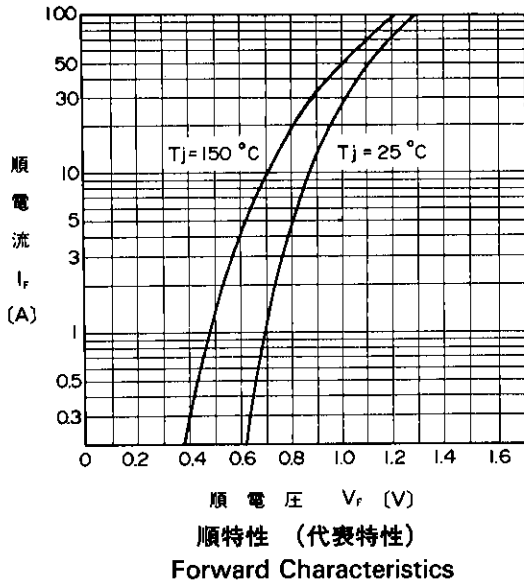
●電気的特性(特に指定がない限り周囲温度 $T_a = 25^\circ\text{C}$ とする)

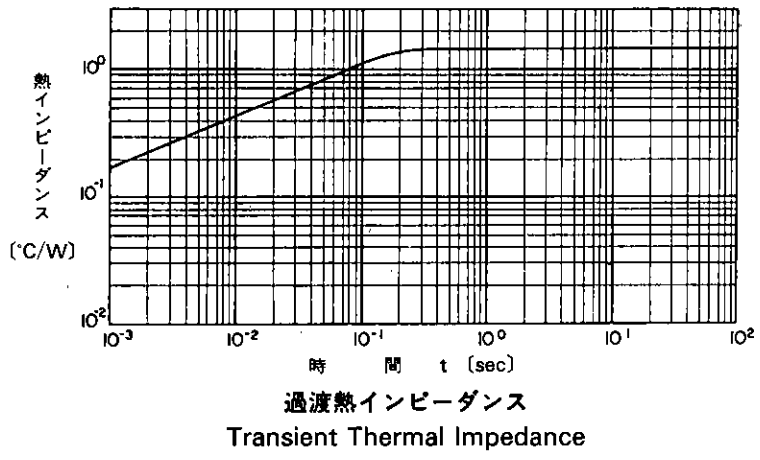
Electrical Characteristics ($T_a = 25^\circ\text{C}$ Unless otherwise specified)

| Items | Symbols | Conditions | Max. | Units |
|--------------------------------|---------------|--|------|---------------------------|
| 順電圧 Forward Voltage Drop | V_{FM} | $I_{FM} = 10.0\text{A}$ | 0.95 | V |
| 逆電流 Reverse Current | I_{RRM} | $V_R = V_{RRM}$ | 200 | μA |
| 逆回復時間 Reverse Recovery Time | t_{rr} | $I_F = 0.1\text{A}, I_R = 0.2\text{A}, I_{rec} = 0.05\text{A}$ | 40 | ns |
| 熱抵抗 Thermal Resistance | $R_{th(j-c)}$ | 接合・ケース間 junction to case | 1.5 | $^\circ\text{C}/\text{W}$ |

A

■特性曲線 : Characteristics





A

For more information, contact:

Collmer Semiconductor, Inc.

P.O. Box 702708

Dallas, TX 75370

972-733-1700

972-381-9991 Fax

<http://www.collmer.com>