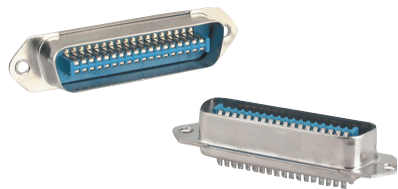


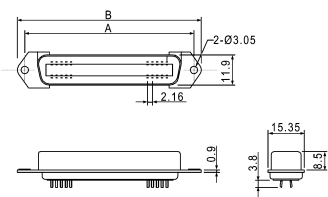
- * Current rating : 1 AMP
- * Voltage rating : 700 volts DC at sea level.
- * Contact resistance : 10 mΩ Max.
- * Insulation resistance : 100 MΩ Min .
- * Operating temperature : -55°C to + 120°C

- * Insulator : glass-fiber polyester UL 94V-0
- * Contacts : phosphor bronze
- * Shell : steel
- * Finishes : contact-gold plated.
shell-zinc plated with clear chromate

Male



YH10xxP
No. of pins



Female

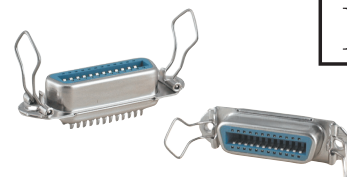


YH20xxS
No. of pins

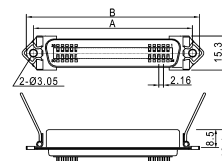
| Contacts | A | B |
|----------|-------|-------|
| 14 | 36 | 44 |
| 24 | 46.78 | 54.78 |
| 36 | 59.74 | 67.74 |
| 50 | 74.85 | 82.85 |

H

Female



Y140xxS
No. of pins



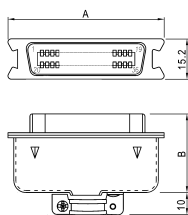
| Contacts | A | B |
|----------|-------|-------|
| 14 | 36 | 44 |
| 24 | 46.78 | 54.78 |
| 36 | 59.74 | 67.74 |
| 50 | 78.85 | 82.85 |

I

Male



Y130xxP
No. of pins



Female



Y160xxS
No. of pins
(14, 24, 36, 50 pins available)

| Contacts | A | B |
|----------|------|------|
| 14 | 38.1 | 29.6 |
| 24 | 48.7 | 29.6 |
| 36 | 61.6 | 31.4 |
| 50 | 76.8 | 33.7 |

I

Male



YJ^P_S70xxP
No. of pins

Female

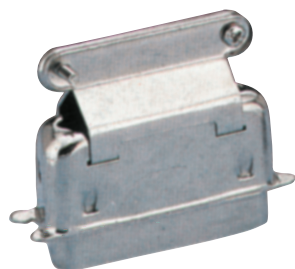


YJ^P_S70xxS
No. of pins

(36, 50 pins available)
P: Plastic S: Steel

J

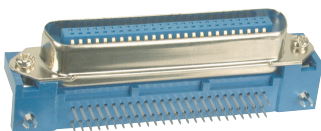
Male



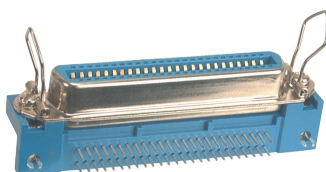
YK3DxxP
No. of pins
(14, 24, 36, 50 pins available)

K

Right angle
Male



Female



YLRxxP
YLRxxS
No. of pins
(14, 24, 36, 50 pins available)

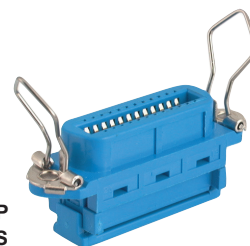
L

Flat cable type
Male



Male : **YMFxxP**
Female : **YMFxxS**
No. of pins
(36, 50 pins available)

Female



M