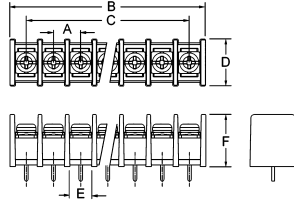
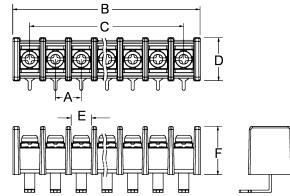
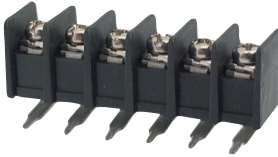
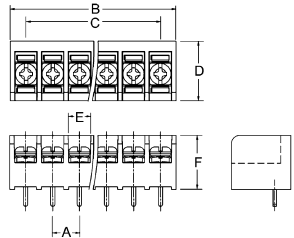


Terminal block
02-30 pin


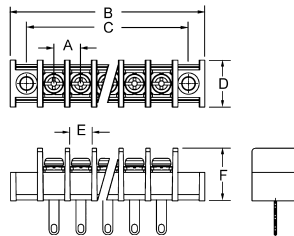
Item	A	B	C	D	E	F	Rated
X977Axx	6.35	(6.35xP)+2	6.35x(P-1)	14.0	5.5	15.0	250V10A
X977Bxx	7.62	(7.62xP)+2	7.62x(P-1)	13.0	6.5	14.2	300V10A
X977Cxx	8.25	(8.25xP)+2	8.25x(P-1)	14.0	6.5	15.0	300V15A
X977Dxx	9.5	(9.5xP)+2	9.5x(P-1)	16.5	8.0	18.8	300V15A
X977Exx	10	(10xP)+2	10x(P-1)	15.5	8.0	18.5	300V15A
X977Fxx	11	(11xP)+2	11x(P-1)	16.8	9.5	18.4	300V15A

 Terminal block (right angle)
02-30 pin


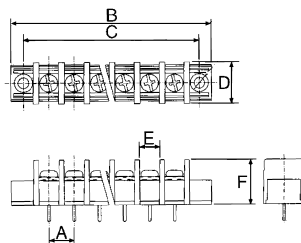
Item	A	B	C	D	E	F	Rated
X977Gxx	6.35	(6.35xP)+2	6.35x(P-1)	13.7	5.4	14.7	300V10A
X977Hxx	7.62	(7.62xP)+2	7.62x(P-1)	13.0	6.5	14.2	300V10A
X977Jxx	8.25	(8.25xP)+2	8.25x(P-1)	14.0	6.5	15.0	300V15A
X977Kxx	9.5	(9.5xP)+2	9.5x(P-1)	16.5	8.0	18.8	300V15A
X977Lxx	10	(10xP)+2	10x(P-1)	15.5	8.0	18.5	300V15A
X977Mxx	11	(11xP)+2	11x(P-1)	16.8	9.5	18.4	300V15A

 Terminal block
02-30 pin


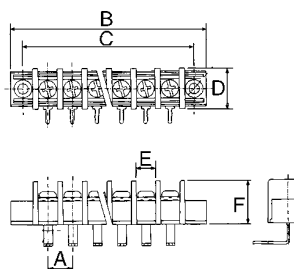
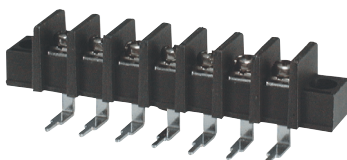
Item	A	B	C	D	E	F	Rated
X977Pxx	6.35	(6.35xP)+2	6.35x(P-1)	14.0	5.1	12.8	300V10A
X977Qxx	8.25	(8.25xP)+2	8.25x(P-1)	15.2	7.0	12.6	300V15A
X977Rxx	9.5	(9.5xP)+2	9.5x(P-1)	17.6	8.0	14.4	300V15A
X977Sxx	11	(11xP)+2	11x(P-1)	20.6	9.5	18.0	300V15A

 Terminal block
02-30 pin


Item	A	B	C	D	E	F	Rated
X977Txx	7.62	7.62x(P+2)	7.62x(P+1)	13.0	6.5	14.2	300V10A
X977Uxx	8.25	8.25x(P+2)	8.25x(P+1)	14.0	6.5	15.0	300V15A
X977Wxx	9.5	9.5x(P+2)	9.5x(P+1)	16.5	8.0	18.8	300V15A
X977Yxx	10	10x(P+2)	10x(P+1)	15.5	8.0	18.5	300V15A
X977Zxx	11	11x(P+2)	11x(P+1)	16.8	9.5	18.4	300V15A

 Terminal block
02-30 pin


Item	A	B	C	D	E	F	Rated
X9780Axx	6.35	6.35x(P+2)	6.35x(P+1)	13.7	5.4	14.7	300V10A
X9780Bxx	7.62	7.62x(P+2)	7.62x(P+1)	13.0	6.5	14.2	300V10A
X9780Cxx	8.25	8.25x(P+2)	8.25x(P+1)	14.0	6.5	15.0	300V15A
X9780Dxx	9.5	9.5x(P+2)	9.5x(P+1)	16.5	8.0	18.8	300V15A
X9780Exx	10	10x(P+2)	10x(P+1)	15.5	8.0	18.5	300V15A
X9780Fxx	11	11x(P+2)	11x(P+1)	16.8	9.5	18.4	300V15A

 Terminal block (right angle)
02-30 pin


Item	A	B	C	D	E	F	Rated
X9780Gxx	6.35	6.35x(P+2)	6.35x(P+1)	13.7	5.4	14.7	300V10A
X9780Hxx	7.62	7.62x(P+2)	7.62x(P+1)	13.0	6.5	14.2	300V10A
X9780Jxx	8.25	8.25x(P+2)	8.25x(P+1)	14.0	6.5	15.0	300V15A
X9780Kxx	9.5	9.5x(P+2)	9.5x(P+1)	16.5	8.0	18.8	300V15A
X9780Lxx	10	10x(P+2)	10x(P+1)	15.5	8.0	18.5	300V15A
X9780Mxx	11	11x(P+2)	11x(P+1)	16.8	9.5	18.4	300V15A