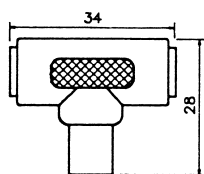
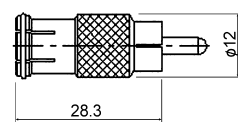


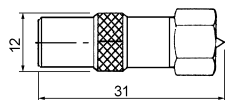
M5848
T-type PAL plug to double PAL jack



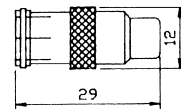
M58562
PAL jack to RCA plug



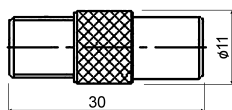
M5849
PAL plug to F male



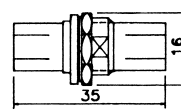
M58563
PAL jack to RCA jack



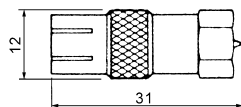
M5850
PAL plug to F female



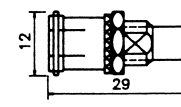
M58564
Double PAL jack bulkhead



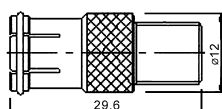
M5851
PAL jack to F male



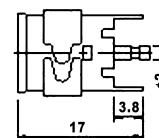
M58565
PAL jack to RCA jack bulkhead



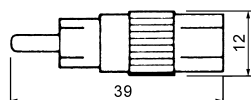
M5852
PAL jack to F female



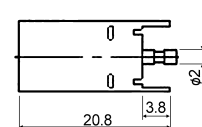
M58566
PAL jack PCB mount



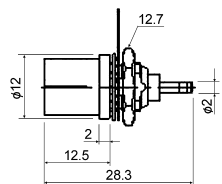
M5853
PAL jack to RCA plug



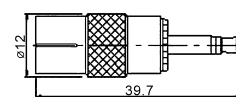
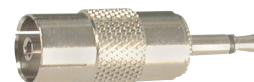
M585661
PAL jack PCB mount



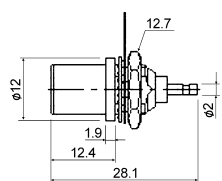
M58541
PAL jack bulkhead



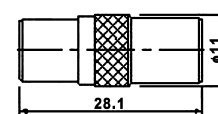
M585662
PAL jack to 3.5 mm plug



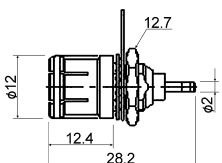
M58551
PAL plug bulkhead



M585663
PAL plug twist on (RG59U/5C2V)



M5856
PAL jack bulkhead



M585664
PAL jack twist on (RG59U/5C2V)

