

YUNPEN USA

YK-T1 SERIES

1. FEATURES

- General purpose filter providing effective emi suppression of both line-to-line and line-to-ground noise.
- Low cost
- 250 Fasten terminals
- All parts are approved by **UL, CSA and VDE.**



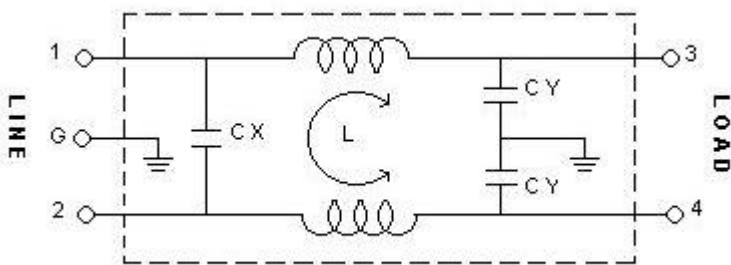
2. SPECIFICATIONS

ITEM \ MODEL		YK01T1	YK03T1	YK06T1	YK10T1
RATED VOLTAGE		250V AC	250V AC	250V AC	250V AC
RATED CURRENT		1A	3A	6A	10A
LEAK CURRENT		0.8mA MAX 250V,50HZ	0.8mA MAX 250V,50HZ	0.8mA MAX 250V,50HZ	0.8mA MAX 250V,50HZ
TEST VOLTAGE	LINE TO LINE	1450V DC	1450V DC	1450V DC	1450V DC
	LINE TO GROUND	2250V DC	2250V DC	2250V DC	2250V DC
INSULATION RESISTANCE		100M ohm MIN 250VDC	100M ohm MIN 250VDC	100M ohm MIN 250VDC	100M ohm MIN 250VDC
DIRECT CURRENT RESISTANCE		0.5 ohm MAX	0.2 ohm MAX	0.15 ohm MAX	0.1 ohm MAX
TEMPERATURE RISE		30C MAX	30C MAX	30C MAX	30C MAX
OPERATING TEMPERATURE		-25 ~ +85C	-25 ~ +85C	-25 ~ +85C	-25 ~ +85C
ATTENUATION	NORMAL MODE 25dbMIN	0.50 ~ 35MHZ	0.70 ~ 50MHZ	0.90 ~ 50MHZ	1.30 ~ 50MHZ
	COMMON MODE 25dbMIN	0.10 ~ 30MHZ	0.20 ~ 50MHZ	0.60 ~ 50MHZ	1.30 ~ 50MHZ
CX		0.1uF	0.1uF	0.1uF	0.1uF
CY		3300pF*2	3300pF*2	3300pF*2	3300pF*2
INDUCTANCE		3.7mH*2	1.8mH*2	0.7mH*2	0.3mH*2

3. NOISE ATTENUATION (dB)

COMMON MODE (LINE TO GROUND) IN 50 OHM SYSTEM							
TYPE	CURRENT	FREQUENCY-MHZ					
	RATING	0.15	0.5	1.0	5.0	10.0	30.0
YK01T1	1A	26	35	38	41	41	37
YK03T1	3A	21	27	32	39	39	42
YK06T1	6A	13	22	27	39	46	35
YK10T1	10A	7	16	21	35	41	36
DIFFERENTIAL MODE (LINE TO LINE) IN 50 OHM SYSTEM							
YK01T1	1A	9	19	24	47	47	43
YK03T1	3A	8	19	25	41	39	34
YK06T1	6A	4	10	15	36	36	30
YK10T1	10A	5	14	19	30	36	36

4. CIRCUIT



5. DIMENSION(mm)

YK01T1~YK10T1

