

model: SCT027H

Characteristics:

Split core, 0.333V output, Built-in with sampling resistance,
 Purpose: Applicable for the current measuring monitoring and j
 of AC motor, lighting equipment and air compressor.

Technical index:

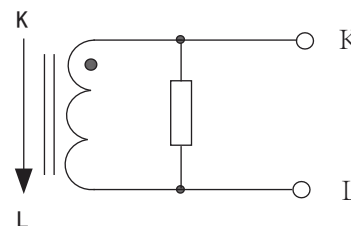
- Hand-held type, leading wire output
- Material of core: Silicon sheets
- work voltage: $\leq 660V$
- Operation temperature: $-25^{\circ}C \sim +60^{\circ}C$
- Storage temperature: $-30^{\circ}C \sim +90^{\circ}C$
- Work frequency: 50Hz~60Hz
- Dielectric strength: 3.5KV 50Hz 1min



Technical Parameters table:

Rated Input(Effective value)	50 80 100 120 160 A
measurement range	20%~120% A
Rated output	0.333 V
Auccuracy	3 %
Linearity	3 %
frequency	50~60 Hz
weight	104 g

Wiring schematic:



Voltage output type : Built-in with sampling resistance

Voltage output type : not allowed secondary short circuit.

Order Format: **model Input output Auccuracy**
 SCT027H/xxA/0.333V/3%
 Noted: The rated current $\leq 160A$ are the standard product

Outline size: (in:mm):

