

Model: SCT013-050

Characteristics:

Opening size 13mmx13mm, compatible to foreign products, leading wire 1 metre, standardΦ3.5 three core plug output, current & voltage two types of output. (Patent No. ZL 2015 3 0060067.X)

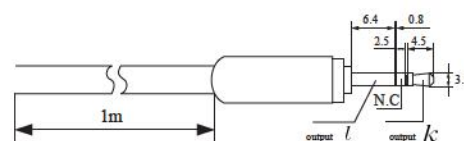
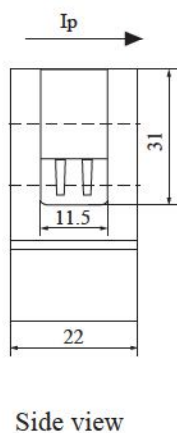
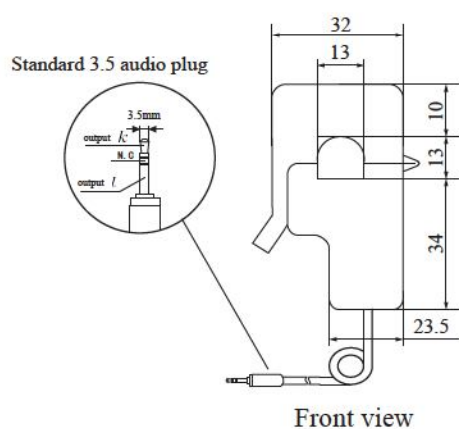
Technical index:

Suspended mounting, leading wire output
 Standard: GB1208-2006
 Operating temperature: -25°C ~ +70°C
 Storage temperature: -30°C ~ +90°C
 Work voltage: 720V
 Frequency range: 50Hz-1KHz
 Dielectric strength: 3.5KV 50Hz 1min

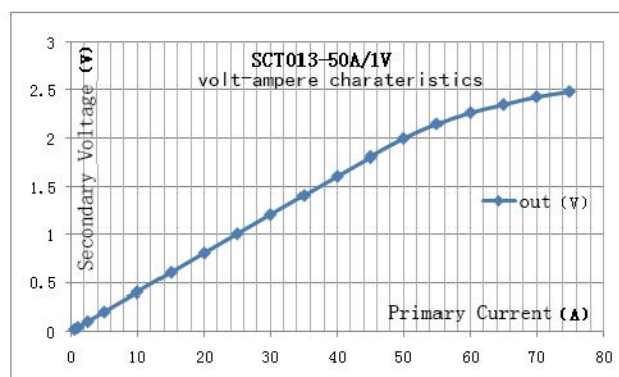
Electric parameters:

Rated input(rms)	50	A
Max.Input	70	A
Rated output	1	V
Turns ratio		
Accuracy	± 1	%
Linearity	≤ 0.2	%
Phase error		
max.Sampling resistance		Ω
Weight	50	g

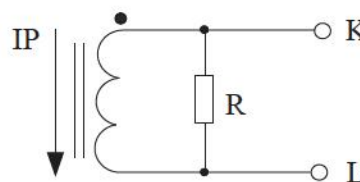
Dimensions (in mm):



Characteristic curve in different load volt-ampere:



Schematic diagram:



Built-in sampling resistance
Voltage output type