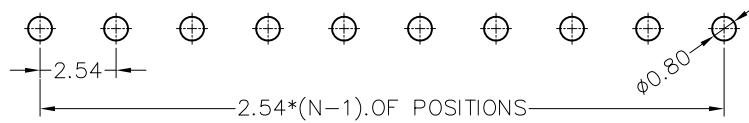


NOTES:

Voltage Rating: 250V,AC/DC
 Current Rating: 3.0 AMP,AC/DC
 Dielectric Withstand Voltage: 1000V,AC/Minute
 Contact Voltage: 20 mΩ Max
 Insulator Material: Polyester,UL94 V-0
 Contact Clip(4 finger): Beryllium copper(C17200)
 Sleeve: Brass
 Accepted pin: $\varnothing 0.40$ to $\varnothing 0.56$ mm
 Forces? Polished steel gauge $\varnothing 0.43$ mm

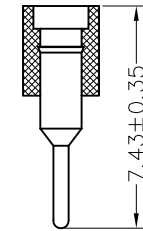
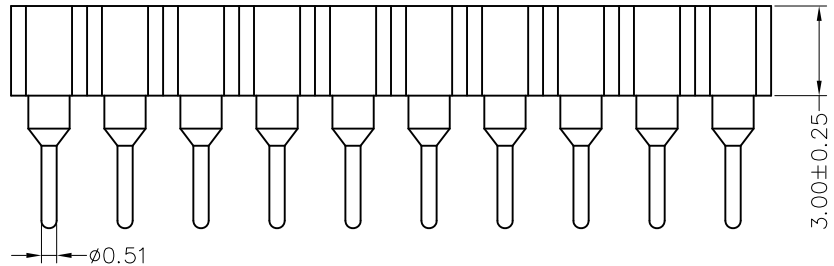
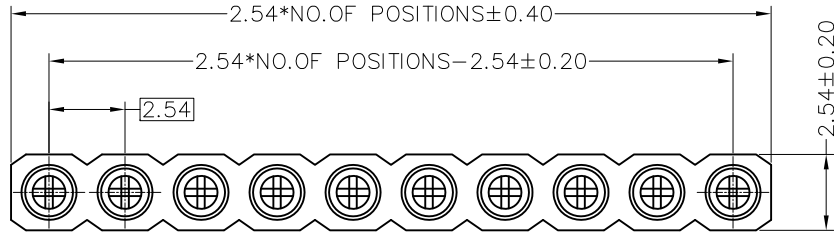
Recommended P.C.B Layout
 P.C.B Board Tolerance ± 0.05



NEW PART NUMBER

MFH E- 30 1 XX S XX 074 X 1

NO.of Pins Per Row 1-40P
 Contact Plating
 G0=Gold Flash
 G1=3u"Gold
 G2=5u"Gold
 G3=10u"Gold
 G4=15u"Gold
 G5=30u"Gold
 SN=Tin Plated
 Pin Length 074=7.40
 Packing
 O=PE Bag
 A=Tray
 T=Tube



				OPERATION		DRAW	Helen	2011/11/12	深圳市起德电子科技有限公司 SHEN ZHEN QIDE ELECTRONIC TECHNOLOGY CO.,LTD				
				X.X	± 0.40	DESIGN	Jenny	2011/11/12		PART NO.	MFHE-301XXSX074X1	UNIT	mm
				X.XX	± 0.25		CHECK	Franck		2011/11/12	TITLE	2.54mm Machine Female Header H=3.0,Single Row,180°DIP	SCALE
A0	2011/11/12	NEW		X.XXX	± 0.15	APPROVE		Steven		2011/11/12	Customer NO.	---	SHEET
REV	DATE	MODIFICATION DESCRIPTION		CHANGE	DIM		TOL					PROJ.	