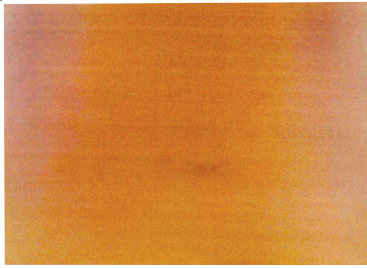




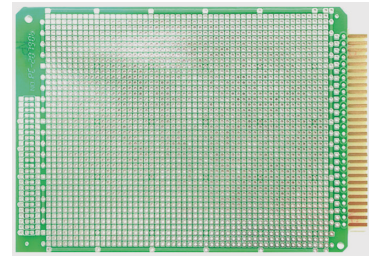
SP76613

DOUBLE SIDE PHENOLIC & COPPER-CLAD CIRCUIT BOARD FOR ELECTRONIC CIRCUIT EXPERIMENT
160 X 115 X 1.6mm
UL FRAME : 94V-0



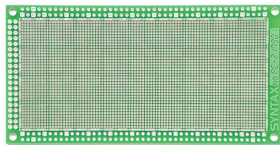
SP76619

2.54mm 28P STD BUS DOUBLE SIDE FR-4 EPOXY GLASS-FIBER CIRCUIT BOARD
155 X 113 X 1.6mm



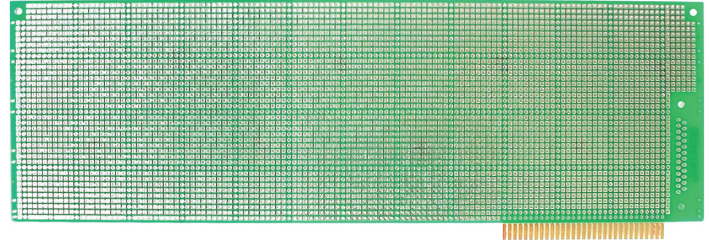
SP76614

1.27mm DOUBLE SIDE FR-4 EPOXY GLASS-FIBER CIRCUIT BOARD
127 X 64 X 1.6mm



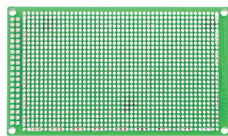
SP76620

2.0mm 31P XT BUS DOUBLE SIDE FR-4 EPOXY GLASS-FIBER CIRCUIT BOARD 333 X 102 X 1.6mm



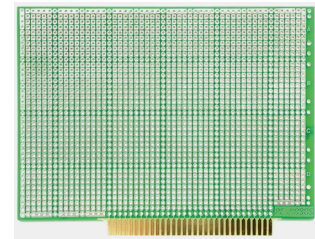
SP76615

2.0mm DOUBLE SIDE FR-4 EPOXY GLASS-FIBER CIRCUIT BOARD
104 X 60 X 1.6mm



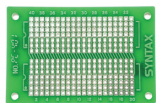
SP76621

2.54mm 31P XT BUS DOUBLE SIDE FR-4 EPOXY GLASS-FIBER CIRCUIT BOARD
140 X 102 X 1.6mm



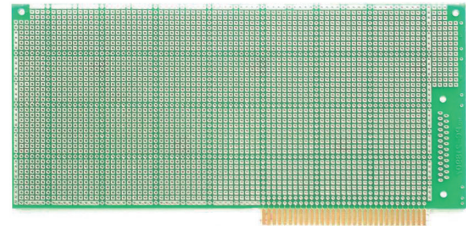
SP76616

2.54mm DOUBLE SIDE FR-4 EPOXY GLASS-FIBER CIRCUIT BOARD
71 X 46 X 1.6mm



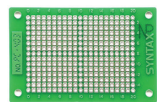
SP76622

2.54mm 31P XT BUS DOUBLE SIDE FR-4 EPOXY GLASS-FIBER CIRCUIT BOARD
216 X 102 X 1.6mm



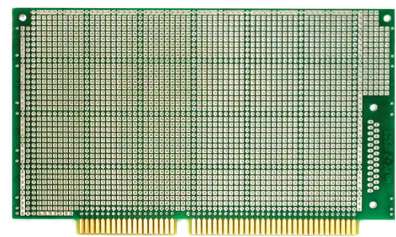
SP76617

2.54mm DOUBLE SIDE FR-4 EPOXY GLASS-FIBER CIRCUIT BOARD
71 X 46 X 1.6mm



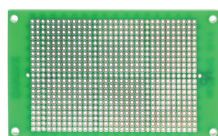
SP76623

2.0mm 31P + 18P AT BUS DOUBLE SIDE FR-4 EPOXY GLASS-FIBER CIRCUIT BOARD
181 X 102 X 1.6mm



SP76618

2.54mm DOUBLE SIDE FR-4 EPOXY GLASS-FIBER CIRCUIT BOARD
103 X 60 X 1.6mm



SP76624

2.54mm 31P + 18P AT BUS DOUBLE SIDE FR-4 EPOXY GLASS-FIBER CIRCUIT BOARD 333 X 102 X 1.6mm

