

## 16X2 1602 I2C/TWI LCD Display Module

Module: KE2052

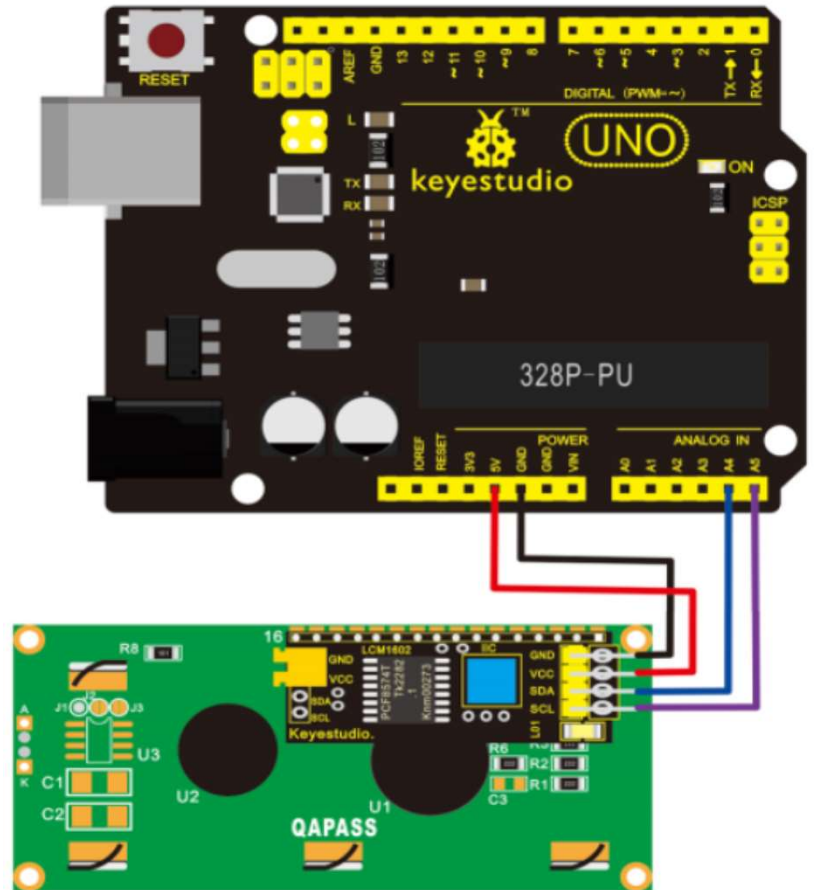
### Description:

This is great LCD display compatible with arduino. With limited pin resources, your project will quickly run out of resources using normal LCDs. With this I2C interface LCD module, you only need 2 lines (I2C) to display the information. If you already have I2C devices in your project, this LCD module actually costs no more resources at all. The address can be set to 0x27.

### Specification:

I2C Address: 0x27  
 Back lit (Blue with white char color)  
 Supply voltage: 5V  
 Interface: I2C/TWI x1, Gadgeteer  
 Adjustable contrast

### Connection diagram:



### Sample code:

```
#include <Wire.h>
#include <LiquidCrystal_I2C.h>
LiquidCrystal_I2C lcd(0x27, 16, 2); // set the LCD address to 0x27 for a 16 chars and 2 line display
void setup()
{
  lcd.init(); // initialize the lcd
  lcd.init();
  // Print a message to the LCD.
  lcd.backlight();
  lcd.setCursor(3, 0);
  lcd.print("Hello, world!");
  lcd.setCursor(2, 1);
  lcd.print("keyestudio!");
}
void loop()
{
}
}
```

### Resources:

[https://wiki.keyestudio.com/Ks0061\\_keyestudio\\_1602\\_I2C\\_Module](https://wiki.keyestudio.com/Ks0061_keyestudio_1602_I2C_Module)