

KE2050 KEYES film pressure sensor module

Parameters:

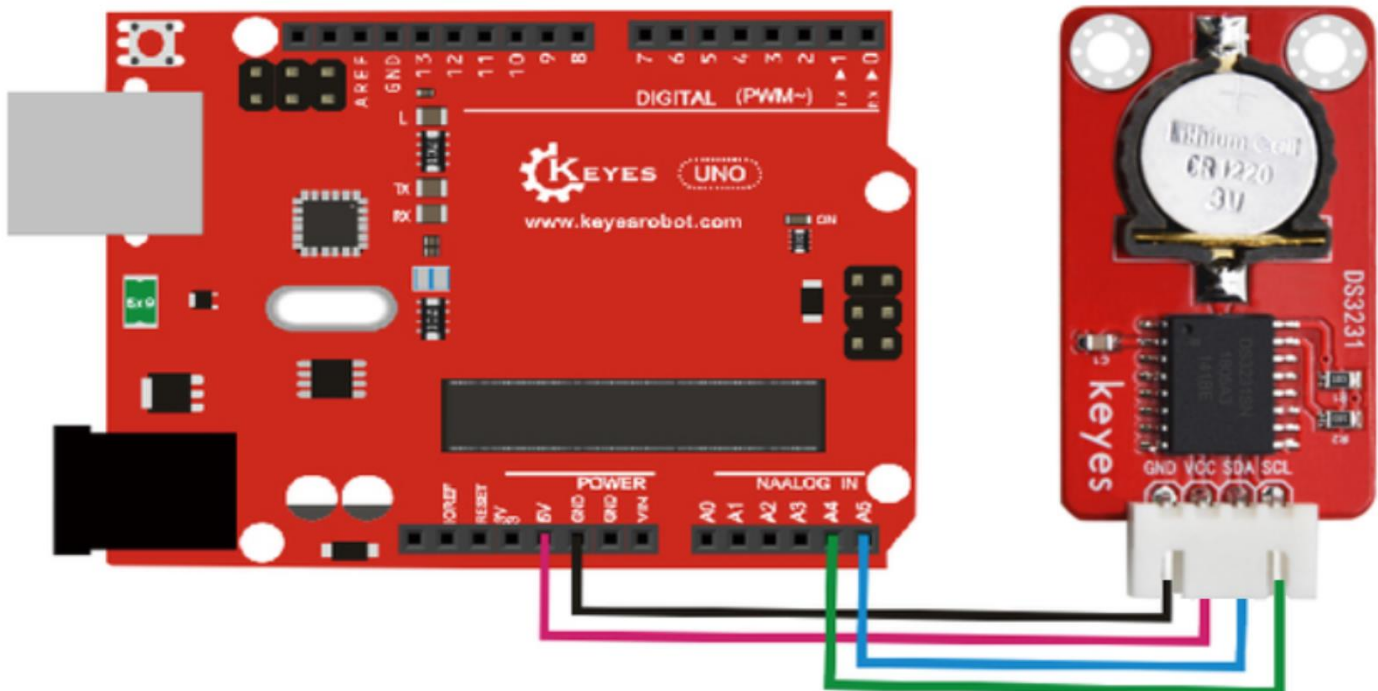
Working Voltage: 3.3 ~ 5VDC

Colour: Red

Size: 44x22x9mm.



PINOUT Instruction:



Before compiling the code, you'd better put DS3231 library under file into Arduino library Folder

<https://github.com/rodan/ds3231>

Sample Code:

```
#include <Wire.h>
#include "DS3231.h"
DS3231 RTC; //Create the DS3231 object
char weekDay[][4] = {"Sun", "Mon", "Tue", "Wed", "Thu", "Fri", "Sat" };
//year, month, date, hour, min, sec and week-day(starts from 0 and goes to 6)
//writing any non-existent time-data may interfere with normal operation of the RTC.
//Take care of week-day also.
DateTime dt(2011, 11, 10, 15, 18, 0, 5);//open the serial port and you can check time here or make a change to the time as needed.
void setup ()
{
  Serial.begin(57600);//set baud rate to 57600
  Wire.begin();
  RTC.begin();
  RTC.adjust(dt); //Adjust date-time as defined 'dt' above
}
void loop ()
{
  DateTime now = RTC.now(); //get the current date-time
  Serial.print(now.year(), DEC);
  Serial.print("/");
  Serial.print(now.month(), DEC);
  Serial.print("/");
  Serial.print(now.date(), DEC);

  Serial.print(" ");
  Serial.print(now.hour(), DEC);
  Serial.print(":");
  Serial.print(now.minute(), DEC);
  Serial.print(":");
  Serial.print(now.second(), DEC);
  Serial.println();
  Serial.print(weekDay[now.dayOfWeek()]);
  Serial.println();
  delay(1000);
}
```

Result:

When the above steps are done, you can upload the code to arduino and open the serial monitor and get the following results:

