

## KE2036 KEYES PS2 dual axis joystick potentiometer module

### Parameters:

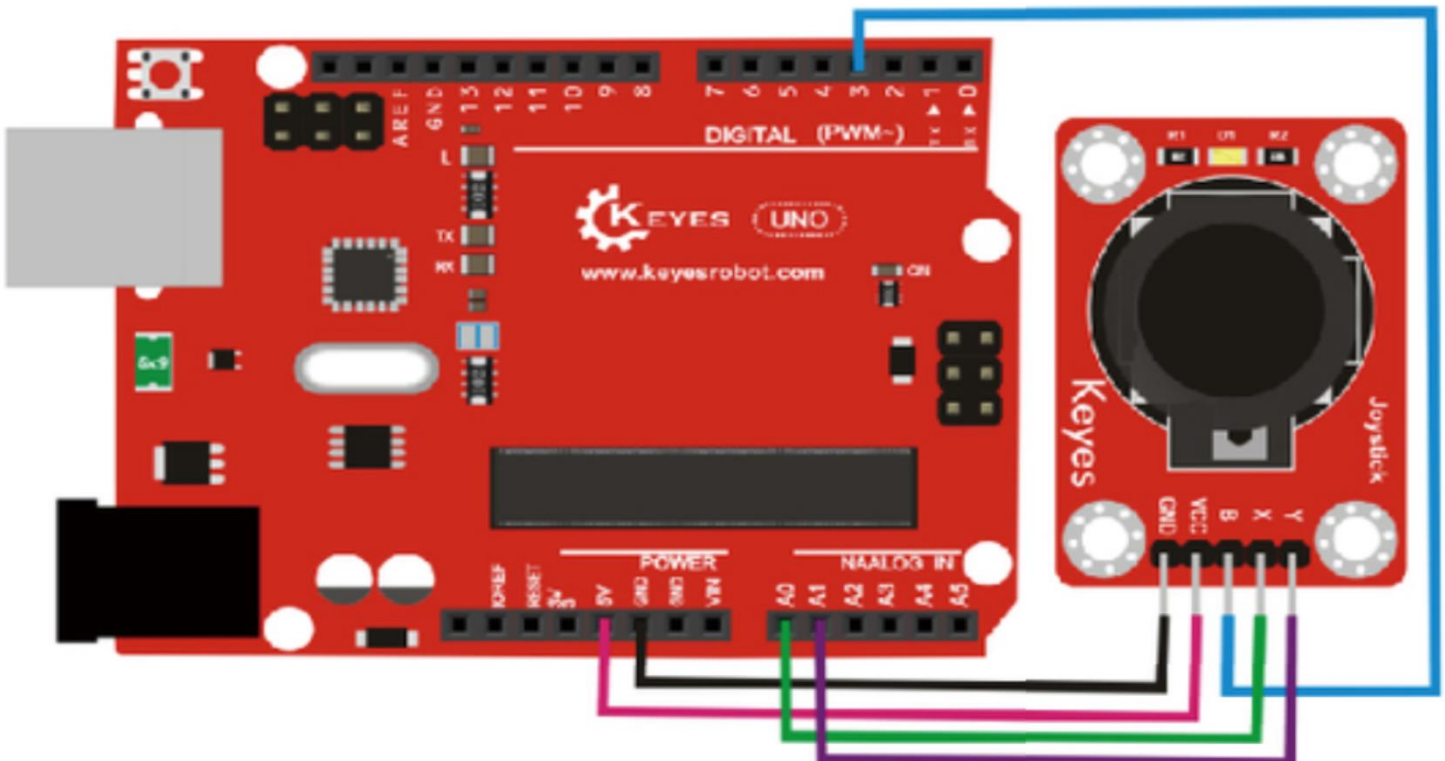
Working Voltage: 5VDC

Colour: Red

Size: 45x26x33mm.



### PINOUT Instruction:



Shenzhen Keyi Interactive Robot Co., Ltd.

### Sample Code:

```
int JoyStick_X = 0; //x
int JoyStick_Y = 1; //y
int JoyStick_Z = 3; //key
void setup()
{
  pinMode(JoyStick_Z, INPUT);
  Serial.begin(9600); // 9600 bps
}
void loop()
{
  int x,y,z;
  x=analogRead(JoyStick_X);
  y=analogRead(JoyStick_Y);
  z=digitalRead(JoyStick_Z);
  Serial.print(x,DEC);
  Serial.print(",");
  Serial.print(y,DEC);
  Serial.print(",");
  Serial.println(z,DEC);
  delay(100);
}
```

### Result:

Wiring well and uploading the code, open the serial monitor and set the baud rate to 9600, push the joystick, you will see the value shown below.

