

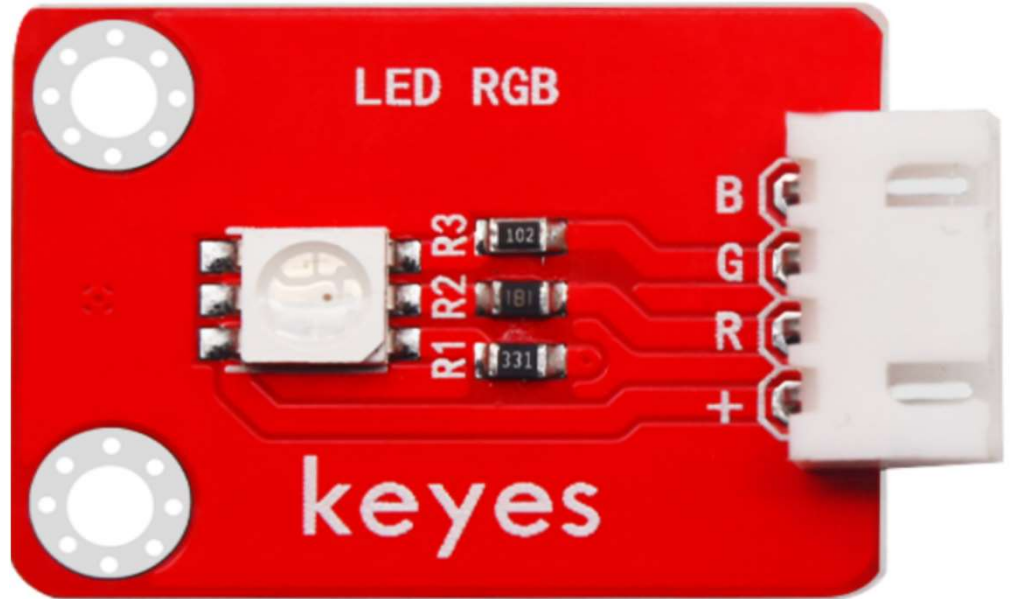
## KE2016 KEYES SMD RGB LED module

### Parameters:

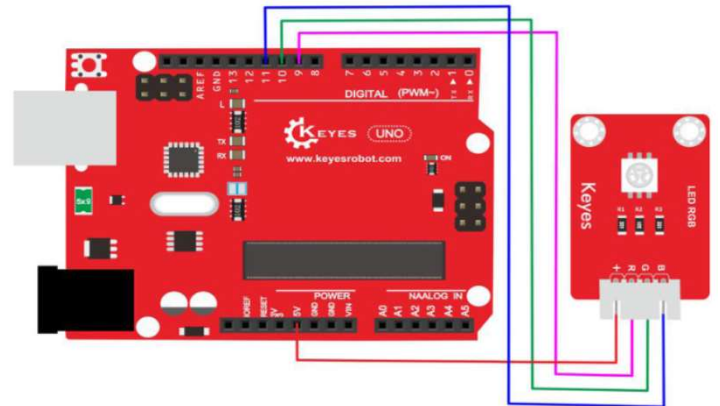
Working Voltage: 3.3 ~ 5VDC

Colour: Red

Size: 34x22x9mm.



### PINOUT Instruction:



### Test code:

```
int redpin = 9; //select the pin for the red LED
int bluepin =11; // select the pin for the blue LED
int greenpin =10;// select the pin for the green LED
int val;
void setup() {
  pinMode(redpin, OUTPUT);
  pinMode(bluepin, OUTPUT);
  pinMode(greenpin, OUTPUT);
}
void loop()
{for(val=255; val>0; val--)
  {analogWrite(11, val);
  analogWrite(10, 255-val);
  analogWrite(9, 128-val);
  delay(1);
}
for(val=0; val<255; val++)
  {analogWrite(11, val);
  analogWrite(10, 255-val);
  analogWrite(9, 128-val);
  delay(1);
}
}
```

### Result:

Done uploading the code, you should see the RGB LED flashing with different colors.