

## KE2015 KEYES Two-color LED module

### Parameters:

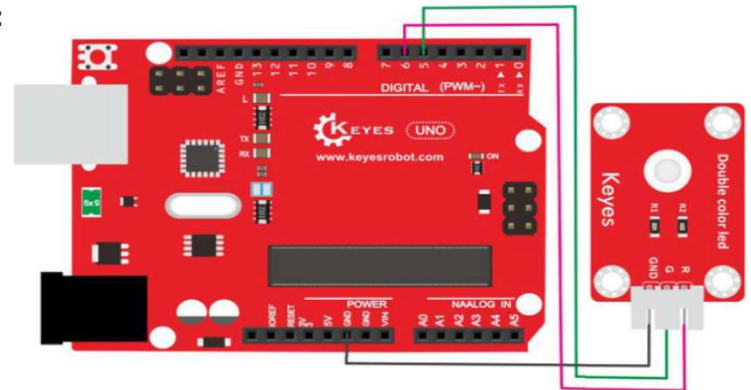
Working Voltage: 3.3 ~ 5VDC

Colour: Red

Size: 34x22x12mm.



### PINOUT Instruction:



### Test code:

```
int redpin = 6; //select the pin for the red LED
int bluepin =11; // select the pin for the blue LED
int greenpin =5; // select the pin for the green LED
int val;
void setup() {
  pinMode(redpin, OUTPUT);
  pinMode(bluepin, OUTPUT);
}
void loop()
{for(val=255; val>0; val--)
  {analogWrite(5, val);
  analogWrite(6, 255-val);
  delay(1);
  }
for(val=0; val<255; val++)
  {analogWrite(5, val);
  analogWrite(6, 255-val);
  delay(1);
  }
}
```

### Result:

Done uploading the code, you should see the Red and Green LED flashing with different colors.