

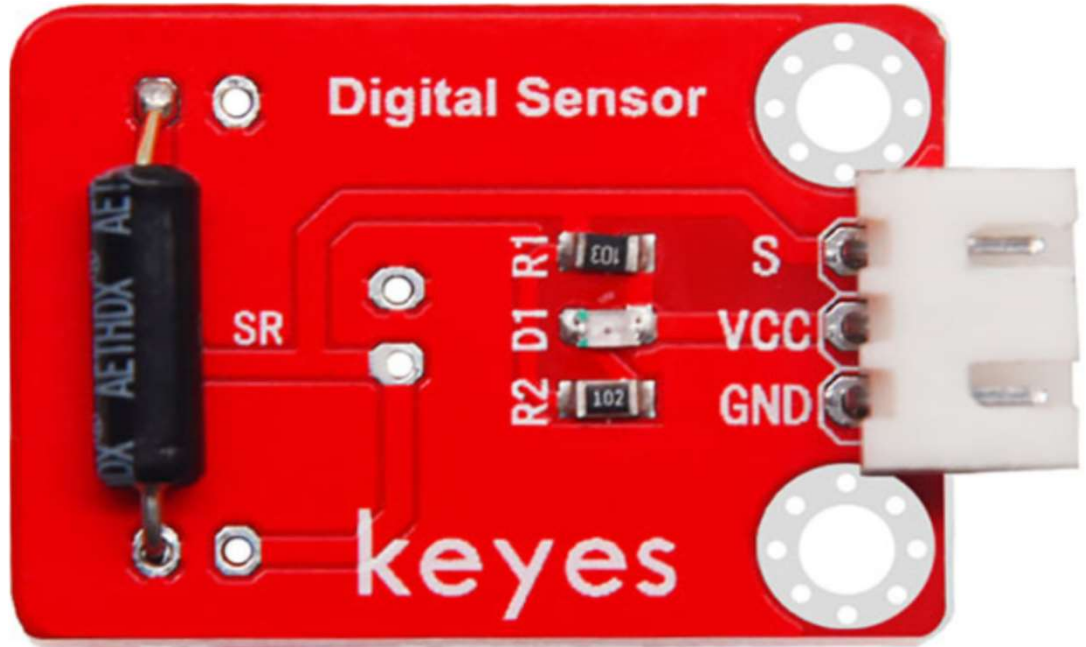
KE2011 KEYES tilt module sensor module

Parameters:

Working Voltage: 3.3 ~ 5VDC

Colour: Red

Size: 34x22x9mm.

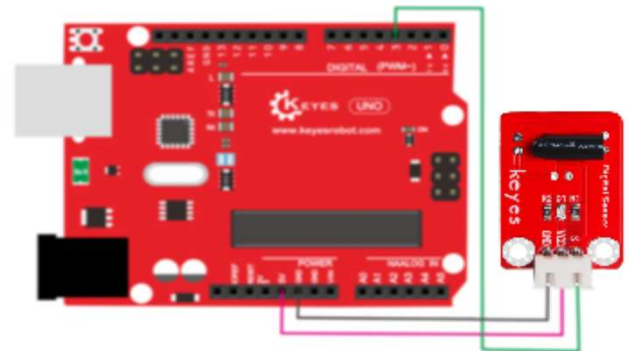


Test code:

```
int ledPin = 13;           // Connect LED to pin 13
int switcher = 3;         // Connect Tilt sensor to Pin3

void setup()
{
  pinMode(ledPin, OUTPUT); // Set pin 13 to output
  pinMode(switcher, INPUT); // Set pin 3 to input
}
void loop()
{
  if(digitalRead(switcher)==HIGH) //Read sensor value
  {
    digitalWrite(ledPin, HIGH); // Turn on LED when the sensor is tilted
  }
  else
  {
    digitalWrite(ledPin, LOW); // Turn off LED when the sensor is not triggered
  }
}
```

PINOUT Instruction:



Result:

Upload the code to the board. Then tilt the sensor, you will see the led on the sensor is turned ON with the Pin 13 LED.