

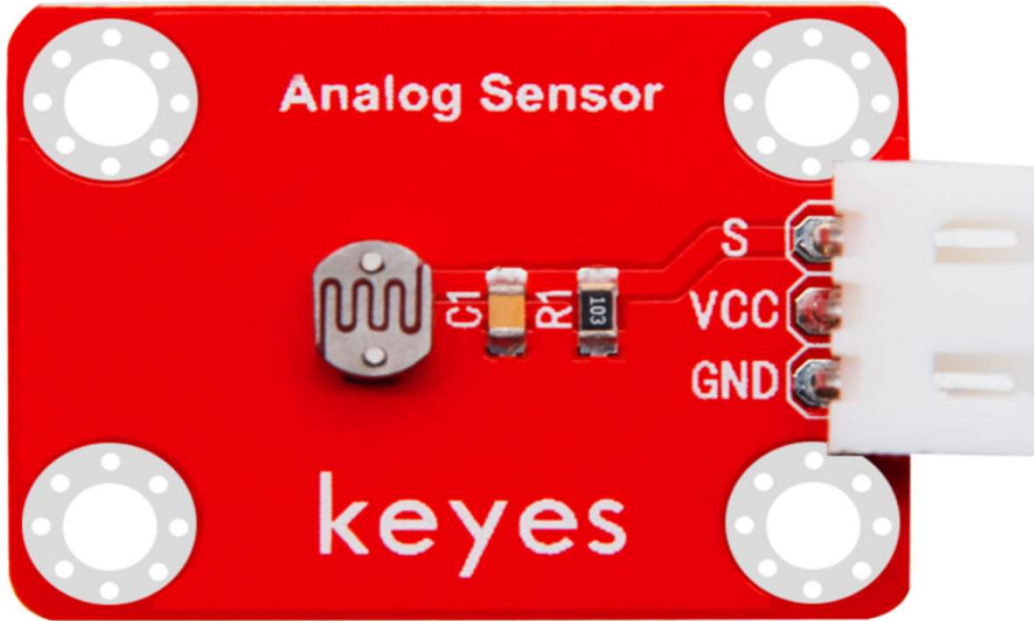
KE2009 KEYESPhotosensitive sensor module

Parameters:

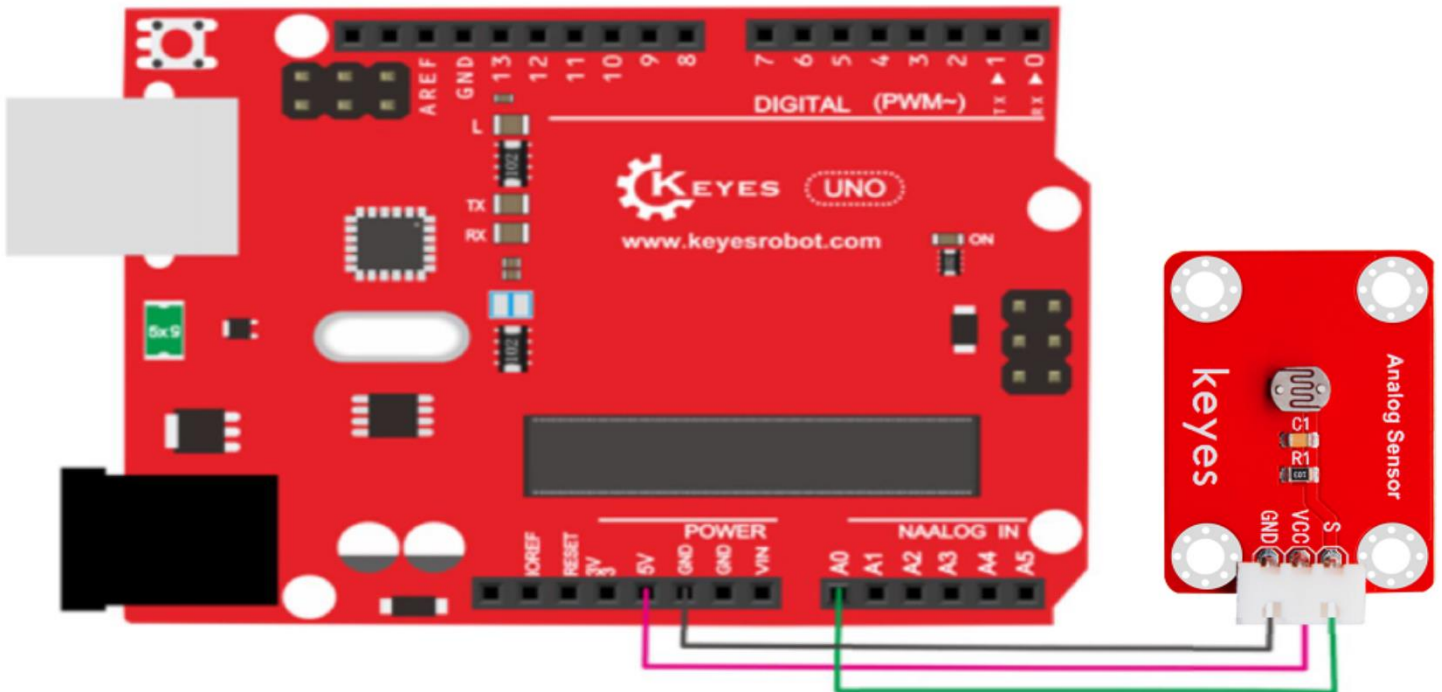
Working Voltage: 3 ~ 5VDC

Colour: Red

Size: 34x22x9mm.



PINOUT Instruction:



Sample Code:

```
int sensorPin =A0 ;
int value = 0;
void setup()
{
  Serial.begin(9600); }
void loop()
{
  value = analogRead(sensorPin);

  Serial.println(value, DEC);

  delay(50);
}
```

Result:

Done wiring and powered up, upload well the code, then open the serial monitor, if cover the photocell on the sensor with your hand, you will see the analog value decrease. Shown as below.

