

## KE2003 KEYES blue LED module

### Parameters:

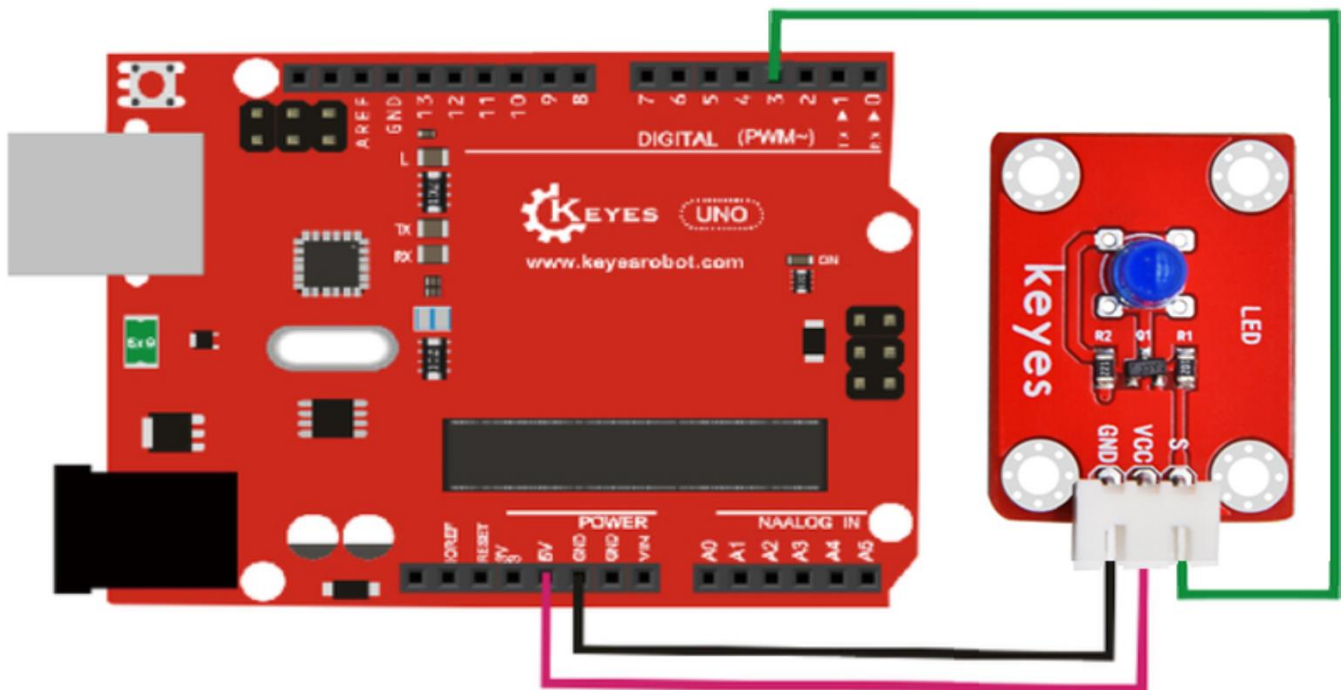
Working Voltage: 3 ~ 5VDC

Colour: Red

Size: 34x22x12mm.



### PINOUT Instruction:



### Sample Code:

```
int led = 3;
void setup()
{
  pinMode(led, OUTPUT); //Set Pin7 as output
}
void loop()
{  digitalWrite(led, HIGH); //Turn off led
   delay(1000);
   digitalWrite(led, LOW); //Turn on led
   delay(1000);
}
```

### Result:

The LED will flash on for one second, then off for one second, repeatedly and alternately.  
If it doesn't, make sure you have assembled the circuit correctly and verified and uploaded the code to your board.