

keyes Pirhana LED board module (pad hole) environmental protection

Overview:

This module is an arduino dedicated module, and its connection port is compatible with arduino sensor expansion board. It uses Pirhana LED, with five colors of red, yellow, blue, green and white, and has the characteristics of low power consumption, pure color, long life and high stability. The module comes with 4 positioning holes for you to fix the module to other equipment.

Specification:

Working voltage: 3.3-5V (DC)

Interface: 3PIN interface

Input signal: digital signal

Weight: 2.4g

KE0016 Red LED

KE0017 Green LED

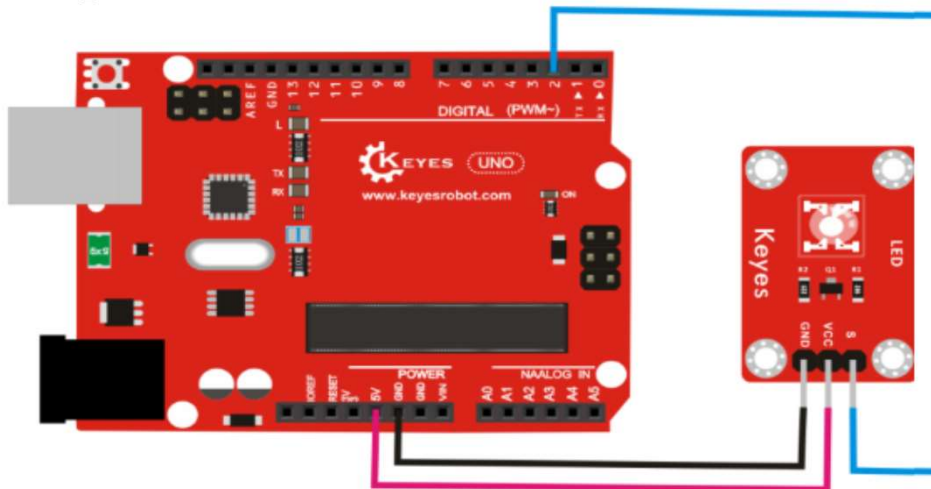
KE0018 Blue LED

KE0019 Yellow LED

KE0020 White LED



Connection Diagram:



Test code:

```
int led = 2; //define digital port 2
void setup()
{
  pinMode(led, OUTPUT); //Set led to output
}
void loop()
{
  digitalWrite(led, HIGH); //Turn on led
  delay(2000); //Delay 2S
  digitalWrite(led, LOW); //Close led
  delay(2000); //Delay 2S
}
```

Results:

LED flashers every 2 seconds.

Change the delay period to 200 for a fast flashing strobe.