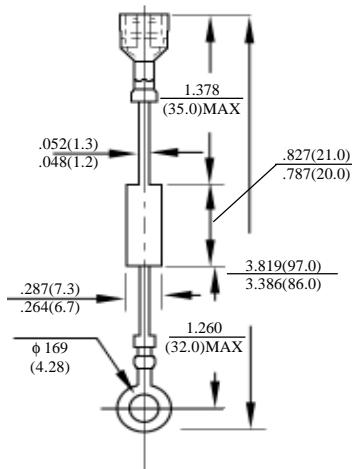


HVM5 – HVM16
HVP5 – HVP16

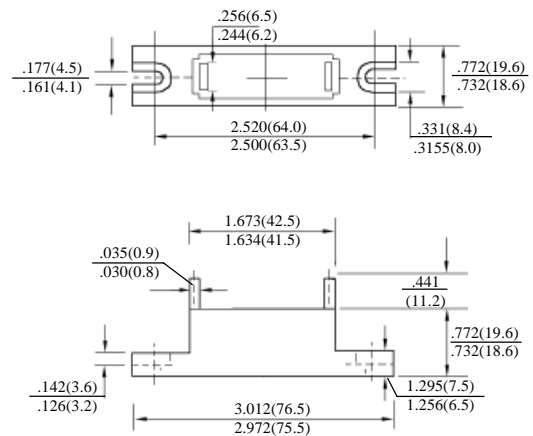
高压二极管 HIGH – VOLTAGE DIODES

最大额定值、电性 MAXIMUM RATINGS AND ELECTRICAL CHARACTERISTICS
 Ratings at 25°C ambient temperature unless otherwise specified. Single phase, half wave, 60Hz, resistive or inductive load. For capacitive load, derate current by 20%.

型号 TYPE	最大反向峰值电压 Maximum Peak Reverse Voltage	最大平均正向电流 Maximum Average Forward Output Current @ $T_A=60^\circ\text{C}$	最大正向浪涌电流 Maximum Forward Peak Surge Current @ 8.3ms Superimposed	最大正向峰值电压 Maximum DC Forward Voltage drop per element	最大反向电流 Maximum DC Reverse Current at rated DC Blocking Voltage per element		结温 Operating Junction Temperature	外型尺寸 Package Dimensions						
	PRV	I_{O}	$I_{FM}(\text{Surge})$	V_F	I_R				T_J					
	V_{PK}	MA_{AV}	A_{PK}	V_{PK}	25°CCTA μADC	125°CCTA μADC	°C							
HVM5 HVM8 HVM10 HVM12 HVM14 HVM15 HVM16	5000 8000 10000 12000 14000 15000 16000	350	30	at $I_F=0.35\text{ADC}$ 8.0 9.0 12 12 14 14 14	10	500	135	HVM						
HVP5 HVP8 HVP10 HVP12 HVP14 HVP15 HVP16	5000 8000 10000 12000 14000 15000 16000			750					50	at $I_F=0.75\text{ADC}$ 8.0 9.0 12 12 14 14 14	10	500	130	HVP



HVM



HVP

HVM5-HVM16 HVP5-HVP16

高压二极管额定值与特性曲线

RATING & CHARACTERISTIC CURVES OF HIGH-VOLTAGE DIODES

FIG. 1 - CURRENT DERATING

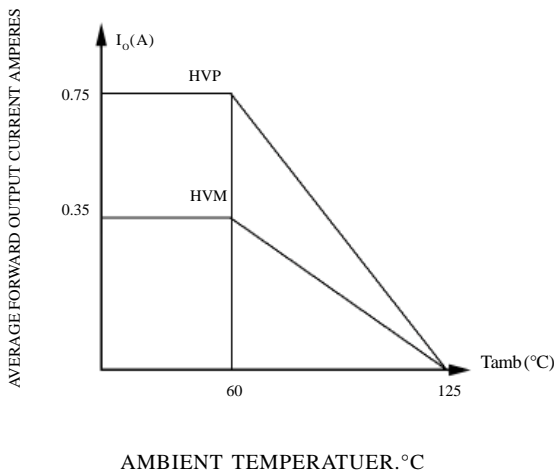


FIG. 2 - MAXIMUM NON-REPETITIVE PEAK FORWARD SURGE CURRENT

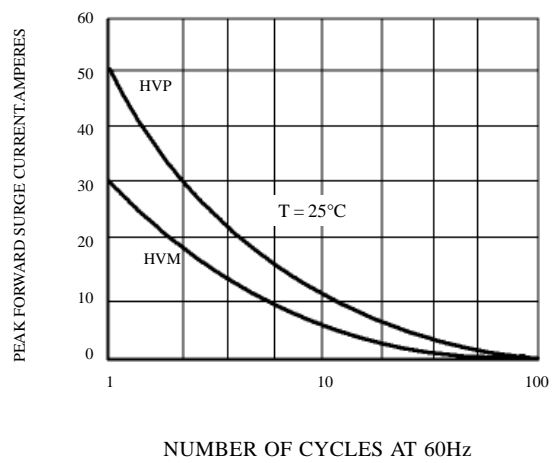


FIG. 4 - TYPICAL FORWARD CHARACTERISTICS

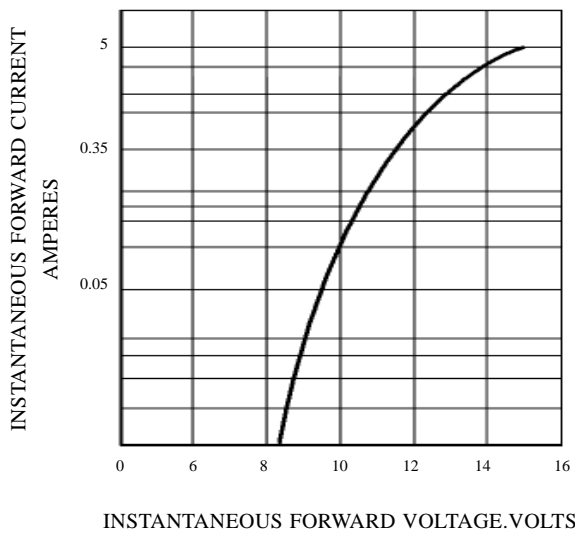


FIG. 3 - TYPICAL REVERSE CHARACTERISTICS

