

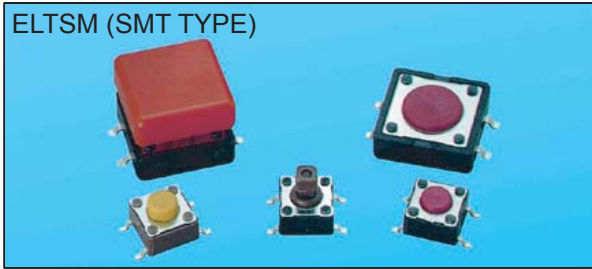
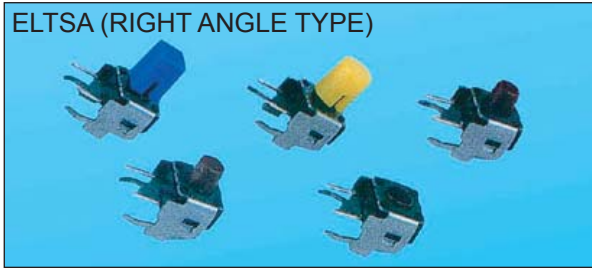
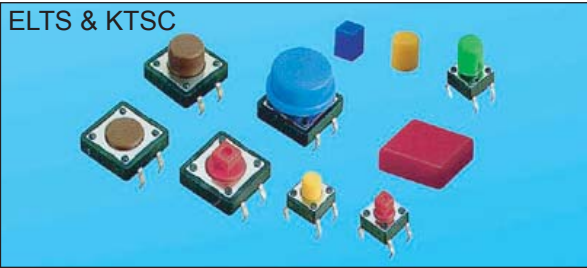


SPECIFICATIONS

RATING: 50mA, 12VDC
 ELECTRICAL LIFE: Standard: 100,000 cycles □
 Others: Please inquire our office □
 CONTACT RESISTANCE: 100mΩ max
 INSULATION RESISTANCE: 100MΩ min. 500VDC
 DIELECTRIC STRENGTH: 250VAC/1 min
 OPERATION FORCE: 260gf □
 160gf □
 100gf □
 STORAGE TEMPERATURE: -30°C to +80°C
 CONTACT ARRANGEMENT: 1 pole 1 throw

MATERIALS

COVER - Stainless steel.
 BASE - UL94V-0 Nylon Thermoplastic(Black)
 STEM - UL94V-0 Nylon Thermoplastic □
 CONTACT DISC - Phosphor bronze with silver cladding
 TERMINAL - Brass with silver cladding
 CAP - Thermoplastic ABS



F
5

HOW TO ORDER

ELTS □ □ - □ □ □ - □

Package Style <Only For DTSM>:
 B= Tube
 T/R=Tape & Reel

Operation Force:
 ▲ K= 100gf N= 160gf
 ▲ Y= 520gf R= 260gf
 S= 320gf
 <▲12x12, K, Y Unavailable>

Dimension H:

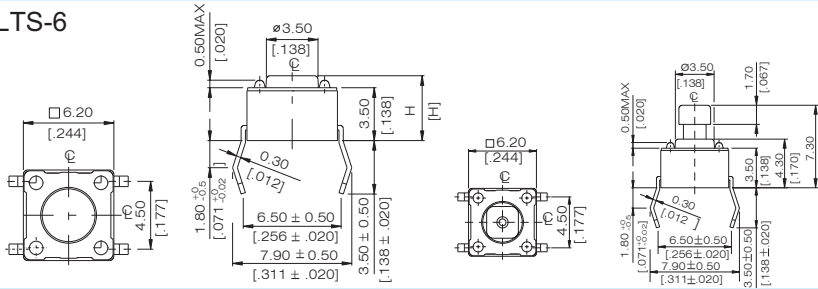
CODE		ELTSA-6	ELTS-6/ELTSM-6/ELTSG-6		ELTSG2	ELTS-2/ELTSM-2
▲(SQ.)x2.4mm	1	3.15 mm	4.3 mm		1	4.3 mm
	2	3.85 mm	5.0 mm			
	3	5.85 mm	7.0 mm			
	44	6.15 mm	7.3 mm		4	7.3 mm (SQ.) x3.8 mm
	5	8.35 mm	9.5 mm			
	6	11.85 mm	13.0 mm		5	9.0mm

*If you need the other height option, please inquire our office

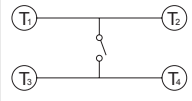
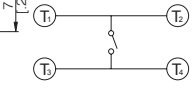
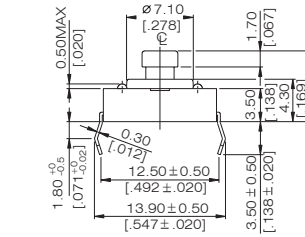
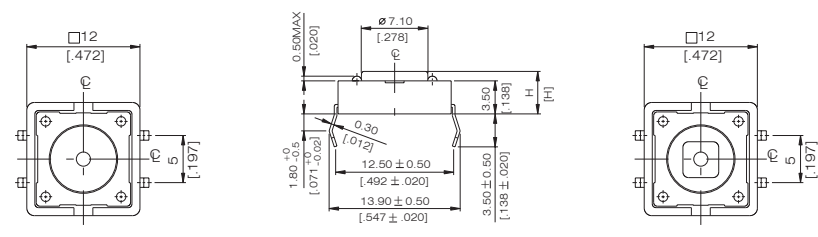
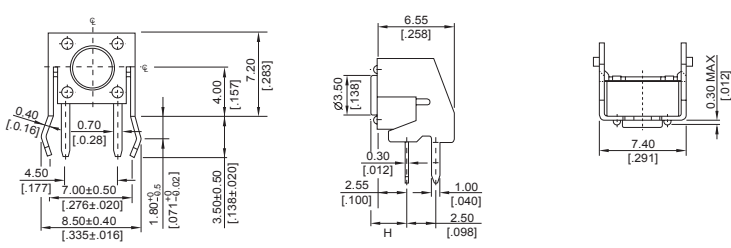
□ = None Post

Prod Size:
 6= 6x6 mm
 ▲2= 12x12 mm
 <▲12x12 ELTSA Unavailable>

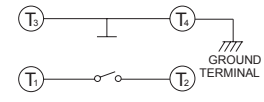
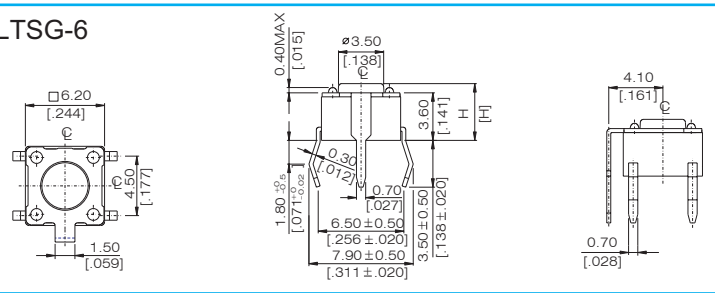
□ = Regular Type Tactile Switch
 ELTSA= Right Angle Type Tactile Switch
 ELTSG= With Ground Terminal Type Tactile Switch
 ELTSM= SMT Type Tactile Switch

ELTS-6


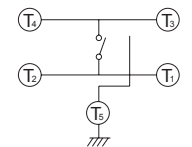
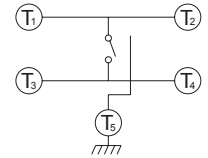
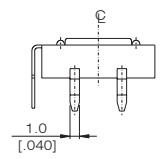
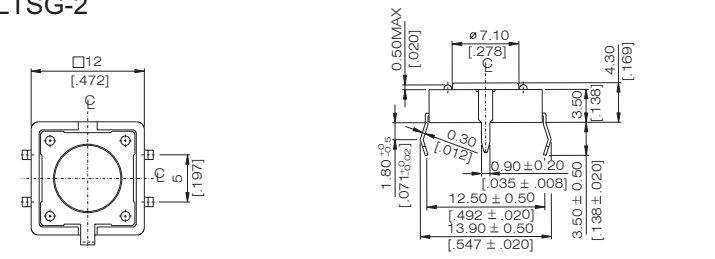
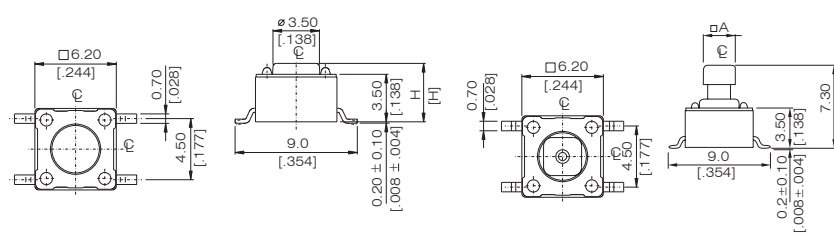
ELTS - 66	<input type="checkbox"/>	13.0[.512]
ELTS - 65	<input type="checkbox"/>	9.5[.374]
ELTS - 644	<input type="checkbox"/>	7.3(SQ)[.287]
ELTS - 63	<input type="checkbox"/>	7.0[.275]
ELTS - 62	<input type="checkbox"/>	5.0[.197]
ELTS - 61	<input type="checkbox"/>	4.3[.169]
PROD.	NO.	H


ELTS-2

ELTSA-6


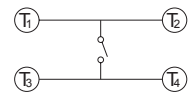
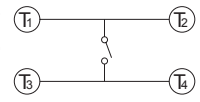
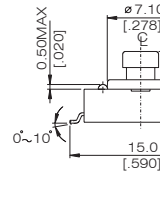
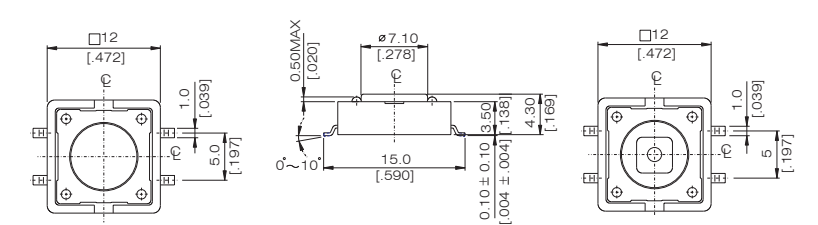
ELTSA - 66	<input type="checkbox"/>	11.85[.467]
ELTSA - 65	<input type="checkbox"/>	8.35[.329]
ELTSA - 644	<input type="checkbox"/>	6.15(SQ)[.242]
ELTSA - 63	<input type="checkbox"/>	5.85[.230]
ELTSA - 62	<input type="checkbox"/>	3.85[.152]
ELTSA - 61	<input type="checkbox"/>	3.15[.124]
PROD.	NO.	H


ELTSG-6


ELTSG - 66	<input type="checkbox"/>	13.0[.512]
ELTSG - 65	<input type="checkbox"/>	9.5[.374]
ELTSG - 644	<input type="checkbox"/>	7.3(SQ)[.287]
ELTSG - 63	<input type="checkbox"/>	7.0[.275]
ELTSG - 62	<input type="checkbox"/>	5.0[.197]
ELTSG - 61	<input type="checkbox"/>	4.3[.169]
PROD.	NO.	H


ELTSG-2

ELTSM-6


ELTSM - 66	<input type="checkbox"/>	13.0[.512]
ELTSM - 65	<input type="checkbox"/>	9.5[.374]
ELTSM - 644	<input type="checkbox"/>	7.3(SQ)[.287]
ELTSM - 63	<input type="checkbox"/>	7.0[.275]
ELTSM - 62	<input type="checkbox"/>	5.0[.197]
ELTSM - 61	<input type="checkbox"/>	4.3[.169]
PROD.	NO.	H

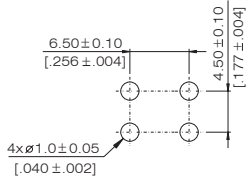

ELTSM-2




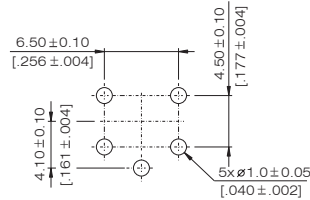
KRS

ELTS/ ELTSA/ ELTSG/ ELTSM Tact Switches

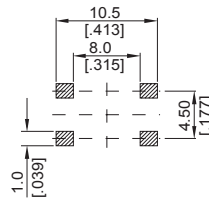
P.C.B LAYOUT ELTS-6



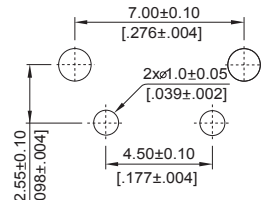
ELTSG-6



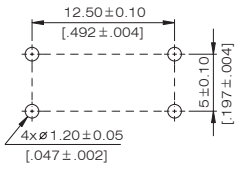
ELTSM-6



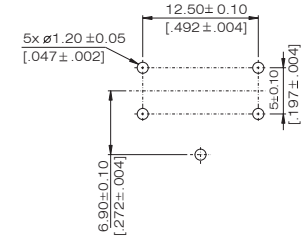
ELTSA-6



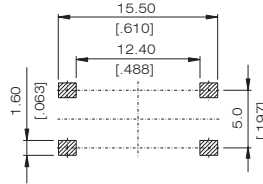
ELTS-2



ELTSG-2



ELTSM-2



SOLDERING PROCESSES

△ WAVE SOLDERING: Recommended solder temperature at 500°F(260°C) max. 5 seconds subject to PCB 1.6mm thickness.

△ HAND SOLDERING: Use a soldering iron of 30 watts, controlled at 608°F(320°C), 2 seconds.

Cap Option:

How to order the Cap:

KTSC - □ □ □

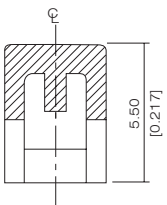
Cop color:
Y= Yellow
B= Blue
R= Red
I= Ivory
K= Black
G= Green
S= Salmon

Cap Type:
1= Square
2= Round

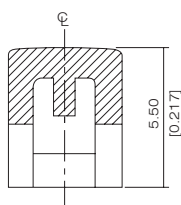
Prod. Size:(Tactile Switch)
6= 6x6 mm
2= 12x12 mm

▲ Only For ELTS □ - 644 & 24,Cap In Bulk Pack

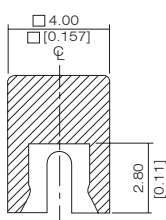
KTSC-6



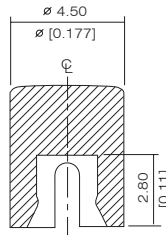
SEC B-B'



SEC B-B'



SEC A-A'



SEC A-A'

KTSC-2

