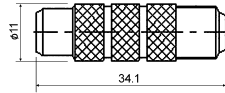
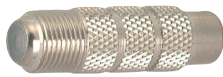
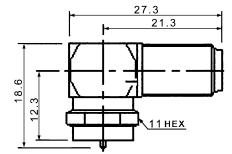


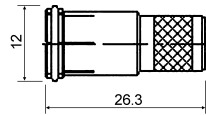
**M5623**  
F female to RCA jack



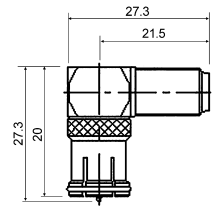
**M5639**  
Right angle F male to F female



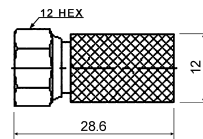
**M5625**  
F quick male twist on type (RG58U/59U)



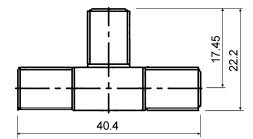
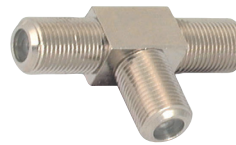
**M5640**  
Right angle F female to F quick male



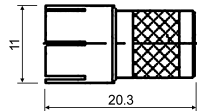
**M56260**  
F male twist on type (RG213U)



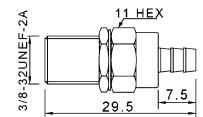
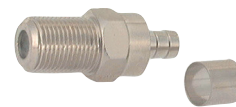
**M5641**  
T-type triple F female



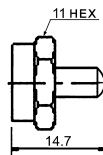
**M5629**  
F quick male twist on type (RG58U/59U)



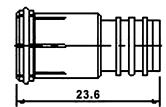
**M56422**  
F female (RG59U/5C2V)



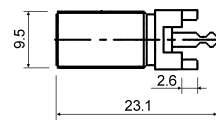
**M5631**  
F male dummy load 75Ω terminator



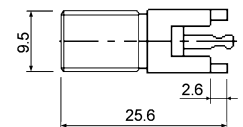
**M56423**  
F quick male (RG59U)



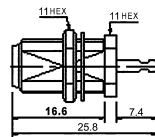
**M5633**  
F female PCB mount



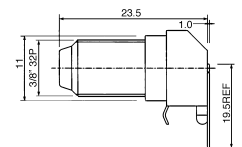
**M56424**  
F female PCB mount



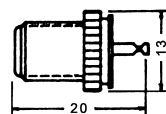
**M5634**  
F female bulkhead



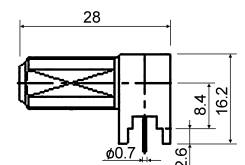
**M564255**  
Right angle F female PCB mount



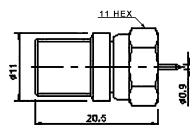
**M5635**  
F female



**M56426**  
Right angle F female PCB mount



**M5637**  
F male to F female



**M56427**  
F female tin-pin (F-61)

