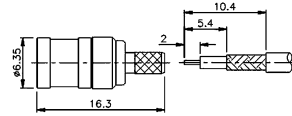
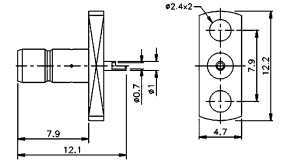


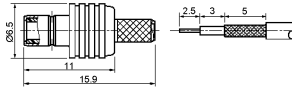
M5150
SMB male crimp type (RG174U/178U)
(gold plated)



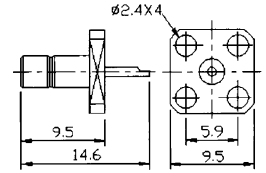
M515605
SMB female chassis mount
(gold plated)



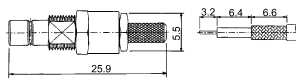
M5151
SMB female crimp type (RG174U/178U)
(gold plated)



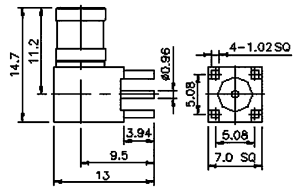
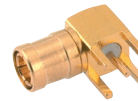
M515606
SMB female chassis mount
(gold plated)



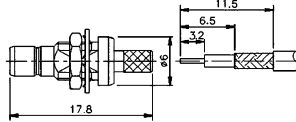
M5152
SMB female bulkhead crimp type (RG174U/178U)
(gold plated)



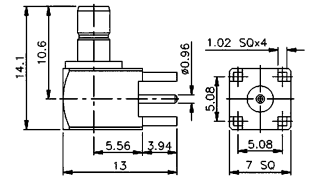
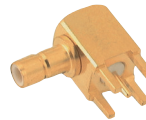
M515615
Right angle SMB male PCB mount
(gold plated)



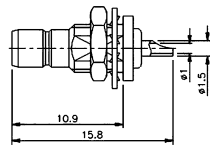
M515210
SMB female bulkhead crimp type (RG174U)
(gold plated)



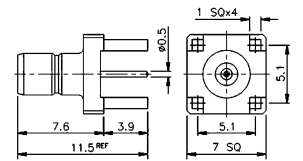
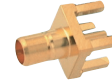
M5157
Right angle SMB female PCB mount
(gold plated)



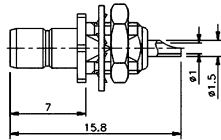
M5153
SMB female bulkhead
(gold plated)



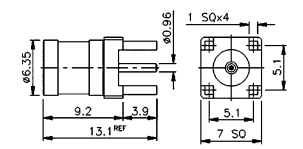
M5158
SMB female PCB mount
(gold plated)



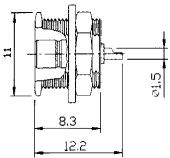
M5154
SMB female bulkhead
(gold plated)



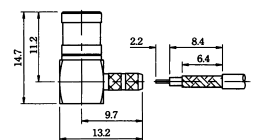
M5159
SMB male PCB mount
(gold plated)



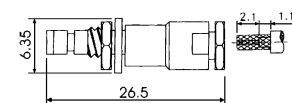
M5155
SMB female bulkhead
(gold plated)



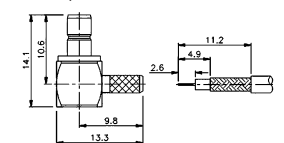
M5160
Right angle SMB male crimp type (RG174U/178U)
(gold plated)



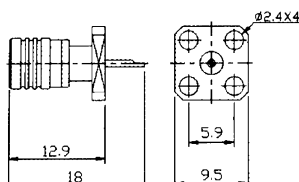
M5156
SMB female bulkhead clamp type (RG174U/178U)
(gold plated)



M516005
Right angle SMB female crimp type (RG174U/178U)
(gold plated)



M515603
SMB male chassis mount
(gold plated)



M5161
Double SMB male
(gold plated)

