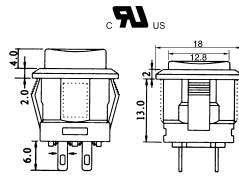




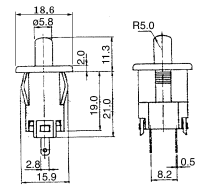
B16925A /B
4P illuminated pushbutton switch (W/LED/3V DC)
125V 3A / 250V 1.5A (DPST)

A-open and close type
B-open type

Color:red amber
green



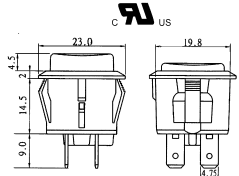
B169F
Pushbutton switch
125V 0.3A
close type



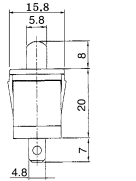
B16930A /B
4P illuminated pushbutton switch
125V 10A / 250V 6A (DPST)

A-open and close type
B-open type

Color:red amber
green



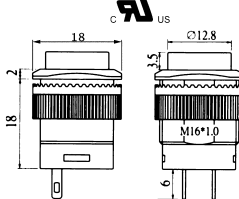
B169G
Pushbutton switch
125V 2A (250V 1A)
open type



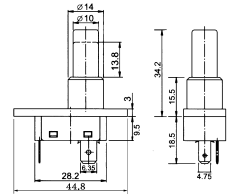
B16935A /B
4P illuminated pushbutton switch (W/LED/3V DC)
125V 3A / 250V 1.5A (DPST)

A-open and close type
B-open type

Color:red amber
green



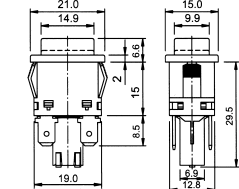
B169K
Pushbutton switch
250V 4A (SPST)
open type



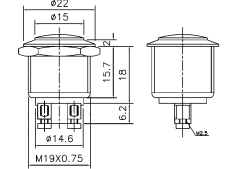
B16937A /B
4P illuminated pushbutton switch
250V 4A (DPST)

A-open and close type
B-open type

Color:red amber green

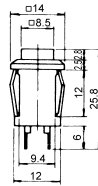


B169Q
Pushbutton switch (SPST)
125V 4A / 250V 2A
open type

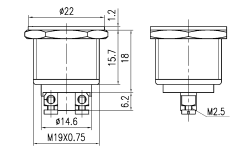


B169A /B
Square type pushbutton switch
125V 1A
A-open type
B-close type

Color:red orange yellow
green blue black white

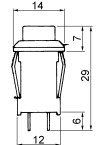


B169R
Pushbutton switch (SPST)
125V 4A / 250V 2A
open type

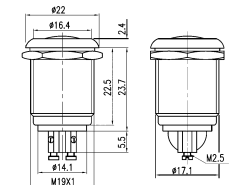


B169C
Square type pushbutton switch
125V 1A
open and close type

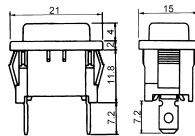
Color:red orange yellow
green blue black white



B169S
Pushbutton switch (SPST)
125V 4A / 250V 2A
open type



B169D
Pushbutton switch (SPST)
125V 10A (250V 6A)
open type



B169DA
Pushbutton switch (SPST)
125V 10A (250V 6A)
open type

