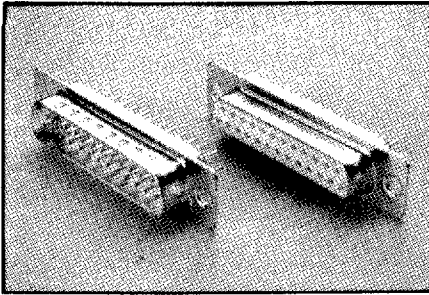


D-SUB: STRAIGHT PCB MOUNT



ELECTRICAL

CONTACT CURRENT RATING:
5 AMP

DIELECTRIC WITHSTANDING:
1000 VAC FOR 1 MINUTE

INSULATION RESISTANCE
1000 MOHMS @ 500 VDC

CONTACT RESISTANCE:
30 mOHMS MAX

MATERIALS

CONTACTS: PHOSPHOR BRONZE

INSULATOR: PBT (94V-0)

SHELL: TIN PLATED STEEL

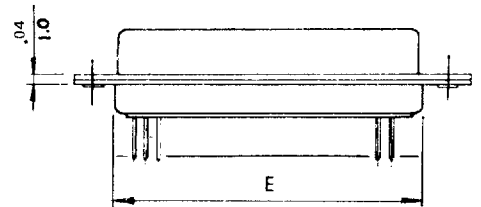
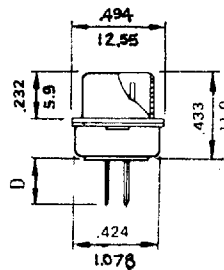
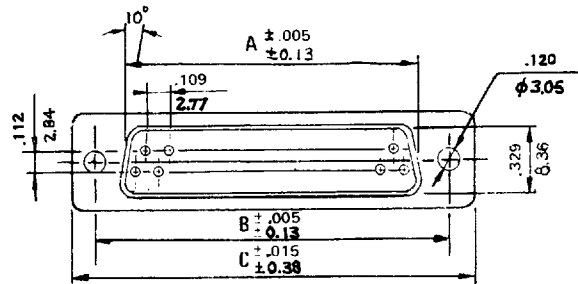
FINISHES

CONTACT: GOLD OVER NICKEL

OPERATING TEMP:

-55 C to +105 C

DIMENSIONS



SHELL SIZE	A/MALE	A/FEMALE	B	C	D	E
9	0.666	0.643	0.984	0.213	0.135	0.759
15	0.994	0.971	1.312	1.541	0.135	1.083
25	1.534	1.511	1.852	2.088	0.135	1.625
37	2.182	2.159	2.500	2.729	0.135	2.272
50	2.081	2.06	2.406	2.634	0.135	2.177

D-SUB: STRAIGHT PCB MOUNT		CROSS REFERENCE	
PART #	DESCRIPTION	AMPHENOL	ITT CANNON
DES-09-PAN	9 PIN MALE	717SDE-09-PT	ADE9POL2K87
DES-09-SAN	9 PIN FEMALE	77SDE-09-ST	ADE9SOL2A197
DAS-15-PAN	15 PIN MALE	717SDA-15-PT	ADA15POL2K87
DAS-15-SAN	15 PIN FEMALE	77SDA-15-ST	ADA15SOL2A197
DBS-25-PAN	25 PIN MALE	717SDB-25-PT	ADB25POL2K87
DBS-25-SAN	25 PIN FEMALE	77-SDB-25-ST	ADB25SOL2A197
DCS-37-PAN	37 PIN MALE	717SDC-37-PT	ADC37POL2K87
DCS-37-SAN	37 PIN FEMALE	77SDC-37-ST	ADC37SOL2A197
DDS-50-PAN	50 PIN MALE	717SDD-50-PT	ADD50POL2K87
DDS-50-SAN	50 PIN FEMALE	77SDD-50-ST	ADD50SOL2A197

* WHITE INSULATOR, THROUGH HOLE MOUNTING *

■ 9005176 0000047 564 ■