

NOTES1:

- UL Standard  
 1.Rated Voltage/Current : 300V / 30A  
 2.Torque Value : M3.5 , 7.02Lb.in  
 3.Wire Range : 14~10AWG

IEC Standard

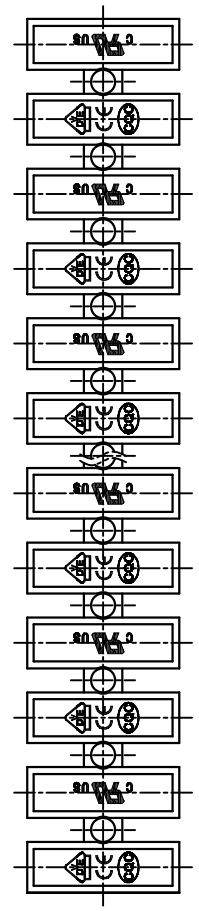
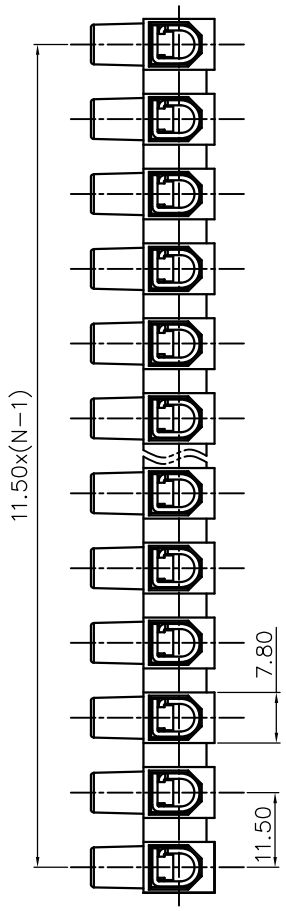
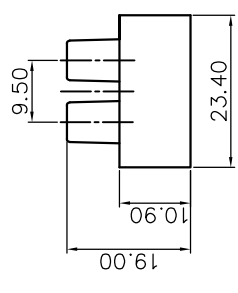
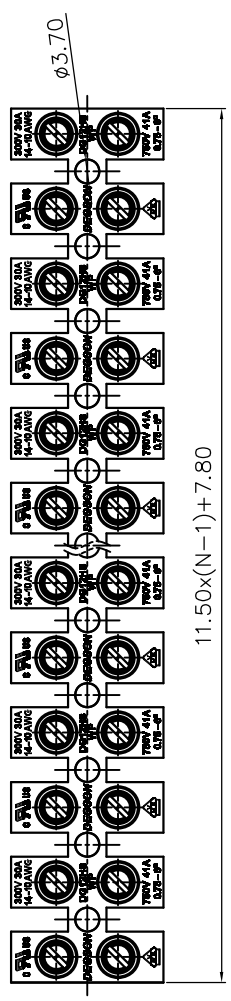
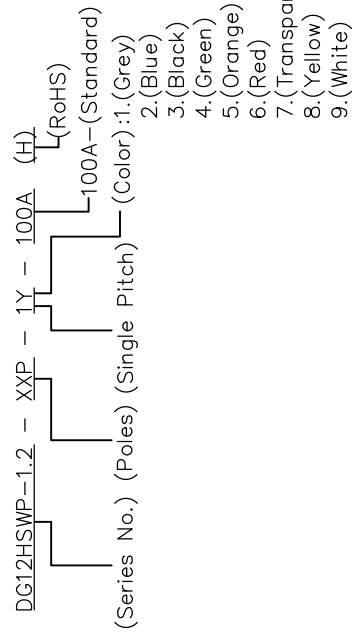
- 1.Rated Voltage/Current : 750V / 41A  
 2.Torque Value : M3.5 , 0.8N·m  
 3.Wire Range : 0.75~6.0mm<sup>2</sup>

NOTES2:

- 1.Dimension shall be interpreted per ASME Y14.5-2009  
 2.Pitch : 11.50mm, Poles : N=02~12P  
 3.Stripping length : 8mm  
 4.Withstanding Voltage : AC3000V/1min.  
 5.Operating temperature: -40°C~+105°C  
 6.Undimensioned Tolerances:

Pitch range in mm	Nominal dimension range			Tolerance
	Over	TO	Under	
6 TO 10	6	10	30	0.1/10
10 TO 24	10	24	60	0.150
±0.15	±0.20	±0.30	±0.50	±1.00
±1.00	±1.30	±1.50	±2.00	±2.00

7.RoHS Compliance



PART NO.: /	<b>DEGSON</b> <sup>®</sup> 宁波高松电子有限公司
APPD: /	NAME: NINGBO DEGSON ELECTRICAL CO., LTD
CHKD: /	NAME: DG12HSWP-1.2-XXP-1Y-100A(H)
DRFT: /	TITLE: CUSTOMER DRAWING
THIRD ANGLE PROJECTION	DRAWING NO.: /
	DO NOT SCALE
1	2
3	4
5	6
7	8
9	10
11	12
13	14
15	16
17	18
19	20
21	22
23	24
25	26
27	28
29	30
31	32
33	34
35	36
37	38
39	40
41	42
43	44
45	46
47	48
49	50
51	52
53	54
55	56
57	58
59	60
61	62
63	64
65	66
67	68
69	70
71	72
73	74
75	76
77	78
79	80
81	82
83	84
85	86
87	88
89	90
91	92
93	94
95	96
97	98
99	100

DETACHED LISTS

REV	DO
1/1	1/1

DRAWING NO.	SCALE
1/1	1:1