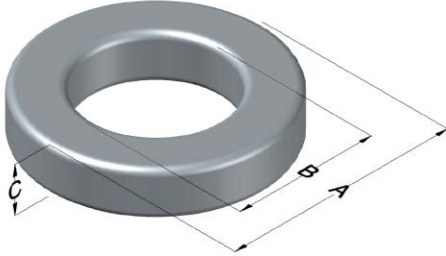




C055021A2

110 Delta Drive
 Pittsburgh, PA 15238
 NAFTA Sales: (1)800-245-3984
 HK Sales : (852)3102-9337
 magnetics@spang.com
 www.mag-inc.com



MPP Permeability (μ)	A_L (nH/T ²)	Core Marking			Coating Color
		Lot Number	Part Number	Inductance Grade	
60	24 ± 8%	XXXXXX	021	X	Gray

Dimensions	Uncoated		Coated Limits			Packaging
	(mm)	(in)	(mm)	(in)		
OD (A)	6.35	0.250	6.99	0.275	max	Bulk Pack 4 bags/box Box Qty= 10,000 pcs
ID (B)	2.79	0.110	2.28	0.090	min	
HT (C)	2.79	0.110	3.43	0.135	max	

Electrical Characteristics			Physical Characteristics						
Watt Loss @ 100 kHz, 100mT max(mW/cm ³)	DC Bias min (oersteds)		Voltage Breakdown wire to wire min (V _{AC})	Break Strength min (kg)	Window Area W _A (mm ²)	Cross Section A _e (mm ²)	Path Length L _e (mm)	Volume V _e (mm ³)	Weight (g)
	80%	50%							
700	50.0	94.0	1000	7.3	4.08	4.70	13.6	64.0	0.59

Winding Information					Temperature Rating	
Winding Length Per Turn				Wound Coil Dimensions (mm)		Curie Temp: 460°C
Winding Factor	(mm)	Winding Factor	(mm)	40% Winding Factor	OD	7.34
					HT	4.12
				Completely Full Window	Max OD	8.81
					Max HT	5.38
0%	11.6	40%	12.8	Surface Area (mm ²)		
20%	12.2	45%	12.9			
25%	12.3	50%	13.1	Unwound Core		
30%	12.4	60%	13.4			
35%	12.6	70%	13.9	40% Winding Factor		
				200		
Notes:						
Coating Temp (Continuous up to): 200°C						

