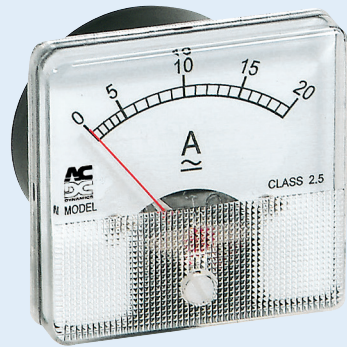
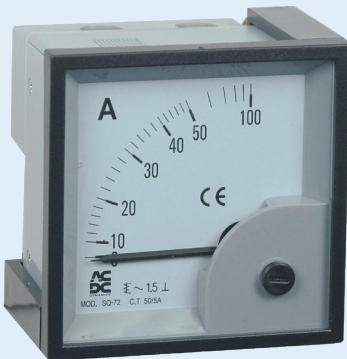


AC PANEL METERS



SQ60 Ammeter



SQ72 Ammeter



Choice of coloured bezels for Ammeters & Voltmeters

For 96-72 Adaptor use VJ4458

Description	Range	60 x 60	<input type="checkbox"/> DIN 48 x 48	<input type="checkbox"/> DIN 72 x 72	<input type="checkbox"/> DIN 96 x 96
-------------	-------	---------	--------------------------------------	--------------------------------------	--------------------------------------

Ammeters

Direct Reading

5A	SQ60-5AAC	SQ48-5AD	SQ72-5AD	SQ96-5AD
10A	SQ60-10AAC	SQ48-10AD	SQ72-10AD	SQ96-10AD
15A	SQ60-15AAC	SQ48-15AD	SQ72-15AD	SQ96-15AD
20A	SQ60-20AAC	SQ48-20AD	SQ72-20AD	SQ96-20AD
25A	SQ60-25AAC	SQ48-25AD	SQ72-25AD	SQ96-25AD
30A	SQ60-30AAC	SQ48-30AD	SQ72-30AD	SQ96-30AD
40A	-	-	SQ72-40AD	SQ96-40AD
50A	-	-	SQ72-50AD	-
60A	-	-	SQ72-60AD	-

CT Driven: (w/o scale plate)

5A	-	SQ48-5	SQ72-5	SQ96-5
1A	-	SQ48-1	SQ72-1	SQ96-1

Scale Plates 100% overscale

1A	-	-	-	SQ96SP 1/1A
5A	-	SQ48SP 5/*A	SQ72SP 5/*A	SQ96SP 5/*A
10A	-	SQ48SP 10/*A	SQ72SP 10/*A	SQ96SP 10/*A
15A	-	SQ48SP 15/*A	SQ72SP 15/*A	SQ96SP 15/*A
20A	-	SQ48SP 20/*A	SQ72SP 20/*A	SQ96SP 20/*A
25A	-	SQ48SP 25/*A	SQ72SP 25/*A	SQ96SP 25/*A
30A	-	SQ48SP 30/*A	SQ72SP 30/*A	SQ96SP 30/*A
40A	-	SQ48SP 40/*A	SQ72SP 40/*A	SQ96SP 40/*A
50A	-	SQ48SP 50/*A	SQ72SP 50/*A	SQ96SP 50/*A
60A	-	SQ48SP 60/*A	SQ72SP 60/*A	SQ96SP 60/*A
75A	-	SQ48SP 75/*A	SQ72SP 75/*A	SQ96SP 75/*A
80A	-	SQ48SP 80/*A	SQ72SP 80/*A	SQ96SP 80/*A
100A	-	SQ48SP 100/*A	SQ72SP 100/*A	SQ96SP 100/*A
125A	-	SQ48SP 125/*A	SQ72SP 125/*A	SQ96SP 125/*A
150A	-	SQ48SP 150/*A	SQ72SP 150/*A	SQ96SP 150/*A
200A	-	SQ48SP 200/*A	SQ72SP 200/*A	SQ96SP 200/*A
250A	-	SQ48SP 250/*A	SQ72SP 250/*A	SQ96SP 250/*A
300A	-	SQ48SP 300/*A	SQ72SP 300/*A	SQ96SP 300/*A
400A	-	SQ48SP 400/*A	SQ72SP 400/*A	SQ96SP 400/*A
500A	-	SQ48SP 500/*A	SQ72SP 500/*A	SQ96SP 500/*A
600A	-	SQ48SP 600/*A	SQ72SP 600/*A	SQ96SP 600/*A
750A	-	SQ48SP 750/*A	SQ72SP 750/*A	SQ96SP 750/*A
800A	-	SQ48SP 800/*A	SQ72SP 800/*A	SQ96SP 800/*A
1000A	-	SQ48SP 1000/*A	SQ72SP 1000/*A	SQ96SP 1000/*A
1200A	-	-	SQ72SP 1200/*A	SQ96SP 1200/*A
1500A	-	-	SQ72SP 1500/*A	SQ96SP 1500/*A
1600A	-	-	SQ72SP 1600/*A	SQ96SP 1600/*A
2000A	-	-	SQ72SP 2000/*A	SQ96SP 2000/*A
2500A	-	-	SQ72SP 2500/*A	SQ96SP 2500/*A
3000A	-	-	SQ72SP 3000/*A	SQ96SP 3000/*A
4000A	-	-	SQ72SP 4000/*A	SQ96SP 4000/*A

* Replace with '5' for 5A CT ratio or '1' for 1A CT ratio

Colour Bezels

-	-	-	SQ72B-*	SQ96B-*
---	---	---	---------	---------

*Add colour to code: ● R (Red), ○ WH (White), ● BL (Blue)

Voltmeters



SQ72 Voltmeter

Description	Range	<input type="checkbox"/> DIN 48 x 48	<input type="checkbox"/> DIN 72 x 72	<input type="checkbox"/> DIN 96 x 96
For 110/120V Monitoring	150V	SQ48-150VAC	SQ72-150VAC	SQ96-150VAC
For 220/240V Monitoring	300V	SQ48-300VAC	SQ72-300VAC	SQ96-300VAC
For 380/415 Monitoring	500V	SQ48-500VAC	SQ72-500VAC	SQ96-500VAC
For 525V Monitoring	600V	-	SQ72-600VAC	SQ96-600VAC
500V Meter with Red Line on 230V/400VAC			SQ72-500VACR	SQ96-500VACR
1000V Excluding VT-25VA 1000/300VAC Transformer			SQ72-1000VAC	



AS34-A8

VS33-V2

CR0120016RT4

Description	Plate Marking	Code 16A Door Mount	Size (mm)	Code 12A Door Mount	Code 12A 22mm Hole Mount	Size (mm)
Ammeter Selector Switches						
3 Phase	O-R-S-T	AS34-A8	48 x 60	CR0120022RT4	CR0120022GT4	48 x 48
Voltmeter Selector Switches						
3 Phase	O-RS-ST-TR	VS33-V2	48 x 60	CR0120016RT4	CR0120016GT4	48 x 48
3 Phase + Neutral	TR-ST-RS-O-RN-SN-TN	VS34-V5	48 x 60	CR0120018RT4	CR0120018GT4	48 x 48

For more selector switches see page 232