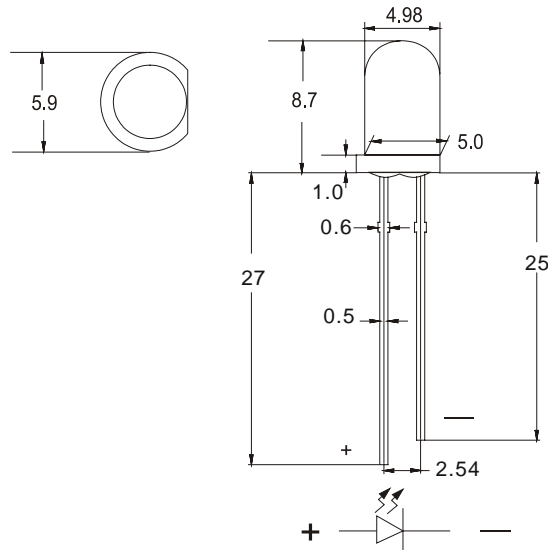


### Features

- ◆ Standard 5mm diameter package
- ◆ Viewing angle 16°
- ◆ General purpose leads
- ◆ Reliable and durable

### Package Dimension:



NOTE:TOLERANCE  $\pm 0.5\text{mm}$

Part NO.	Lens Color	Source Color
5B4SC-A15T465	Water Clear	Super Bright Blue

### Notes:

1. All dimensions are in millimeters (inches).
2. Tolerance is  $\pm 0.25(.10)$  mm unless otherwise noted.
3. Protruded resin under flange is 1.0mm(.04") max.
4. Lead spacing is measure where the leads emerge from the package.
5. Specifications are subject to change without notice.
6. Caution in ESD:  
Static Electricity and surge damages the LED. It is recommended using a wristband or anti-electrostatic glove when handling the LED. All devices, equipment and machinery must be properly grounded.

**Absolute Maximum Ratings at Ta=25°C**

Parameter	MAX.	Unit
Power Dissipation	100	mW
Peak Forward Current (1/10 Duty Cycle, 0.1ms Pulse Width)	100	mA
Continuous Forward Current	30	mA
Derating Linear From 50°C	0.4	mA/°C
Reverse Voltage	5	V
Operating Temperature Range	-40°C to +80°C	
Storage Temperature Range	-40°C to +80°C	
Lead Soldering Temperature [4mm(.157") From Body]	260°C for 5 Seconds	

**Electrical Optical Characteristics: at Ta=25°C**

Parameter	Symbol	Min.	Typ.	Max.	Unit	Test Condition
Luminous Intensity	$I_V$	1500	---	2000	mcd	$I_F=20\text{mA}$ (Note 1)
Viewing Angle	$2\theta_{1/2}$	---	16	---	Deg	(Note 2)
Peak Emission Wavelength	$\lambda_P$	465	470	---	nm	$I_F=20\text{mA}$
Dominant Wavelength	$\lambda_d$	---	470	---	nm	$I_F=20\text{mA}$ (Note 3)
Spectral Line Half-Width	$\Delta\lambda$	---	30	---	nm	$I_F=20\text{mA}$
Forward Voltage	$V_F$	3.0	3.3	3.7	V	$I_F=20\text{mA}$
Reverse Current	$I_R$	---	---	10	$\mu\text{A}$	$V_R=5\text{V}$

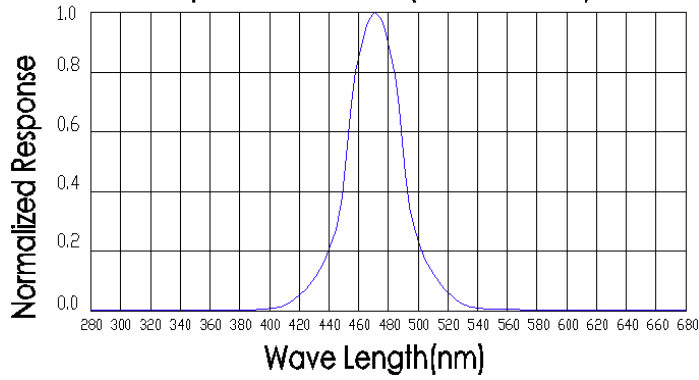
**Notes:**

- Luminous intensity is measured with a light sensor and filter combination that approximates the CIE eye-response curve.
- $\theta_{1/2}$  is the off-axis angle at which the luminous intensity is half the axial luminous intensity.
- The dominant wavelength ( $\lambda_d$ ) is derived from the CIE chromaticity diagram and represents the single wavelength, which defines the color of the device.

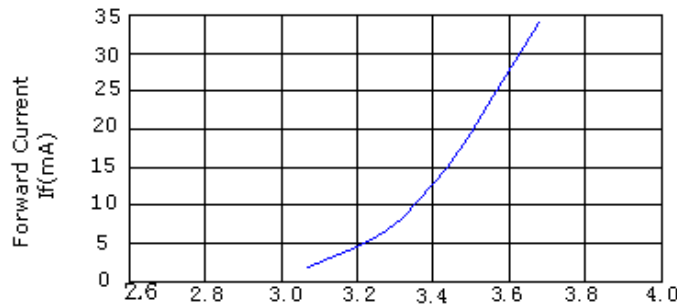
Part No.	5B4SC-A15T465	Spec No.		Page	2 of 3
----------	---------------	----------	--	------	--------

Typical Electrical/Optical Characteristics Curves  
 (25°C Ambient Temperature Unless Otherwise Noted)

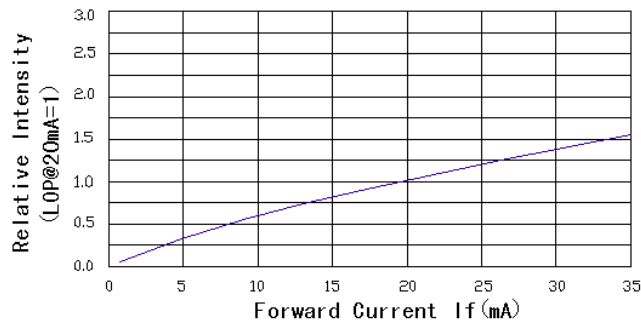
Spectral Radiance(Peak@470nm)



Forward Current VS Forward Voltage



Relative Luminous Intensity vs Forward Current



Beam Patter

