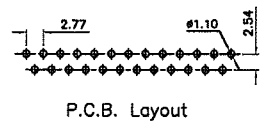


Specifications:
 Current Rating:3.0A AC/DC
 Voltage Rating:250V AC/DC
 Contact Resistance:30m ohm. Max.
 Insulation Resistance:5,000M ohm. min.
 Withstanding Voltage:1,000V AC For One Minute
 Operating Temperature Range:-40°C ~ +85°C
 Materials and Finish
 Insulator:PBT (UL94V-0)
 Contact:Copper Alloy With Gold Plated
 Shell:Metal Iron with Nickel plated

How To Order
 5505F2-XXS-XX
 Blank:Standard type
 CS:Rear Rivet
 CC:Front Rivet
 S:Machine Pin Female
 No. Of Positions
 F2:9.4mm Footprint

Correct for 5505f2-098 NANDA

Pos	A	B	C	D	E
9	16.33	24.99	30.81	7.90	12.50
15	24.66	33.32	39.14	7.90	12.50
25	38.38	47.04	53.04	7.90	12.50
37	54.84	63.50	69.32	7.90	12.50



RoHS Compliant

F				DRAWN:	GENERAL TOLERANCE:	 繼德工業股份有限公司 Neltron Industrial Co., Ltd.	DESCRIPTION: D-SUB Female Right Angle 9.4mm Footprint Machine pin Type	SIZE A4
E			Cel King	.X=±0.20 .XX=±0.15				
D			CHECKED:	UNIT: MM				
C			Jeremy Liu	SCALE: 1:1				
B	21-Jul-2008	ECN-CN080715	Huali	APPROVAL:	SHEET: 1 / 1	PART NO:	5505F2-XXS-XX	
A	22-Aug-2006	(P0258)	Cel king	Mike Wu	PROJECTION:			
REV	DATE	FILE	BY					