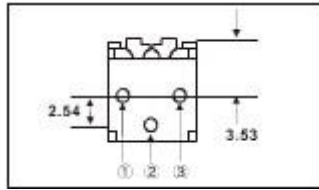


7x7.2 Square/Single Turn/Trimming Potentiometer

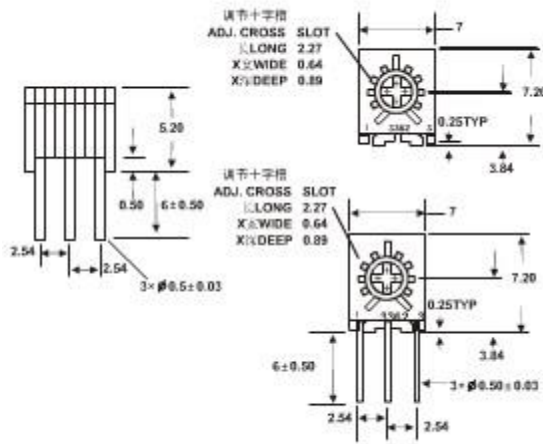
-- 3362P-... Install



dimension.....



... Mutual dimension



Electrical Characteristics

- Standard Resistance Range.....50Ω ~ 2MΩ
- Resistance Tolerance.....±10%
- Absolute Minimum Resistance.....≤1%R 或 10Ω
- Contact Resistance Variation.....CRV≤3% 或 5Ω
- Insulation Resistance.....R1 ≥ 1GΩ (500Vac)
- Withstand Voltage.....700Vac
- Effective Travel.....250°C

Environmental Characteristics

- Power Rating, 300 volts max0.5W@70°C, 0W@125°C
- Temperature Range.....-55°C~125°C
- Temperature Coefficient.....±250ppm/°C

Standard Resistance Table

Resistance (Ohms)	Resistance Code
10	100
20	200
50	500
100	101
200	201
500	501
1,000	102
2,000	202
5,000	502
10,000	103
20,000	203
25,000	253

-30min
- 5cycles
- $\Delta R \leq 5\%R, \Delta(Uab/Uac) \leq 5\%$
- Vibration.....10~ 500Hz, 0.75mm, 6h
- $\Delta R \leq 5\%R, \Delta(Uab/Uac) \leq \pm 7.5\%R$
- Collision.....390m/s², 4000cycles
- $\Delta R \leq 5\%R$
- Electrical Endurance at 70°C.....0.5W@70°C
-1000h,
- $\Delta R \leq 10\%R, R1 \geq 100M\Omega$

Rotational
 Life.....200cycles
 $\Delta R \leq 10\%R, CRV \leq 3\%$ or 5Ω

Physical Characteristics

50,000	503
100,000	104
200,000	204

Starting Torque..... \leq


How To Order

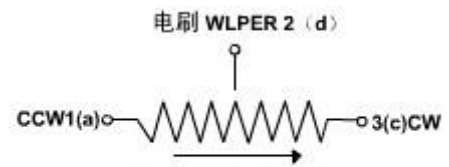
3362-----P-----103

Temperature Variation.....-
 55°C,30min,+125°C

250,000	254
500,000	504
1,000,000	105
2,000,000	205

Special resistances available

型号 **Model** 
 式样 **Style**
 阻值代码 **Resistance Code**



图中公式：除注明外均为 ± 0.25
 Tolerance is ± 0.25 if no identification