

SAFETY ORGANIZATION(S)

THIS FILTER HAS BEEN FORMALLY RECOGNIZED, CERTIFIED OR APPROVED BY THE LISTED AGENCY. THEREFORE, ALL TEST/REQUIREMENTS SPECIFIED IN THE LATEST REVISION OF THE FOLLOWING AGENCY STANDARDS HAVE BEEN MET.

UL 1283
 CSA 22.2 NO. 0, 0.4, 8
 TUV LICENSED AT 19.5 AMPS
 VDE 0565-3 (20AYT6C ONLY)

OPERATING SPECIFICATIONS:

LINE VOLTAGE/CURRENT:
 20 OR 30 AMP., 250VAC PHASE/NEUTRAL-GND
 20 OR 30 AMP., 440VAC PHASE/PHASE
 50-60HZ
 LINE FREQUENCY:
 MAX. CASE RISE θ RATED CURRENT, 40°C
 MAX. LEAKAGE CURRENT, EACH
 1.4mA @ 120V 60HZ
 3.4mA @ 250V 50HZ
 LINE TO GROUND
 OPERATING AMBIENT TEMP. RANGE,
 -10°C TO +40°C @ RATED CURRENT, I_r

IN AN AMBIENT, t_a , HIGHER THAN 40°C, THE MAXIMUM OPERATING CURRENT, I_o , IS AS FOLLOWS:
 $I_o = I_r \sqrt{\frac{95-t_a}{45}}$

RELIABILITY SPECIFICATIONS:

STORAGE TEMPERATURE:
 -25°C TO +85°C
 HUMIDITY,
 21 DAYS @ 40°C 95% RH

TEST SPECIFICATIONS:

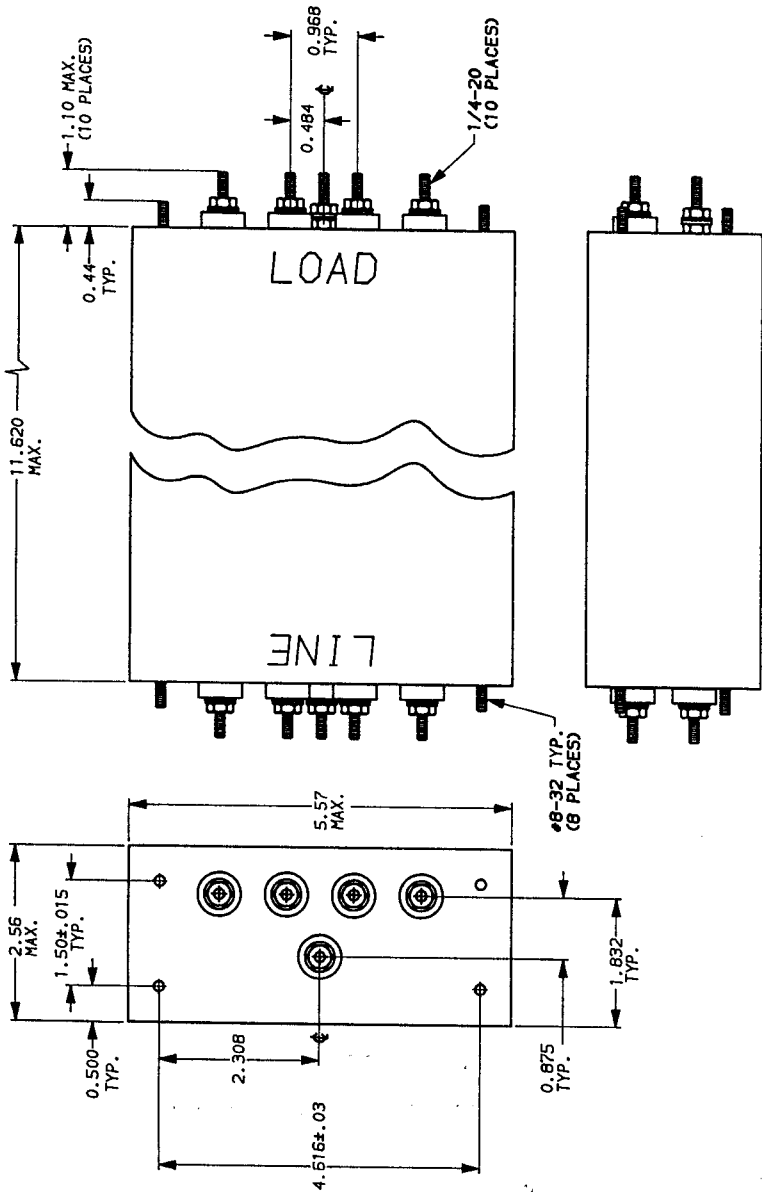
INDUCTANCE, 20A = 7.0mH NOMINAL 30A = 3.32mH NOMINAL
 GROUND CHOKE, .261mH NOMINAL
 CAPACITANCE, (MEASURED @ 1 KHZ, 0.25 VAC MAX., 25°C ±1°C)
 PHASE/NEUTRAL TO GROUND, .026 μ F ±20%
 PHASE TO NEUTRAL, 4.47 μ F ±20%
 DISCHARGE RESISTOR, 73.3K OHMS
 LINE/GROUND AND LINE/LINE 6000 M Ω (MIN) AT 100 VDC
 INSULATION RESISTANCE 20°C AND 50% RH
 (W/O DISCHARGE RESISTOR)
 RECOMMENDED RECEIVING INSPECTION HIPOI,
 PHASE/NEUTRAL TO GROUND, 1500 VAC FOR 1 MINUTE
 PHASE TO NEUTRAL, 1450 VDC FOR 1 MINUTE

FILTER APPROVAL:
 THE BEST WAY TO SELECT AND QUALIFY A FILTER IS FOR YOUR ENGINEERING TO TEST THE UNIT IN YOUR EQUIPMENT.



CORCOM
 LIBERTYVILLE, IL 60048
POWER LINE FILTER

SCALE	DATE	DRG. NO.	RE.
NTS	4-25-89	20AYT6C & 30AYT6C	4
DRW. BY	LJD	CFW	

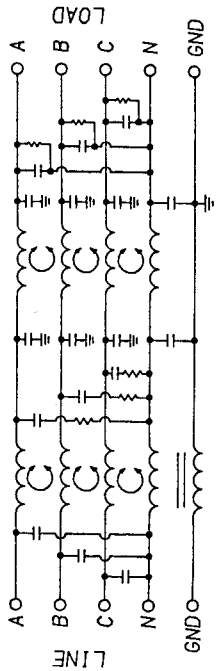


- NOTES:
 1.) UNLESS OTHERWISE SPECIFIED, TOLERANCE TO BE ±.030
 2.) LINE SIDE HAS INSULATED GROUND TERMINAL.

NOTE: COMMON MODE A-B-C & N SHORTED TOGETHER.
 DIFF. MODE MEASURED N TO A-B-C SHORTED TOGETHER.

50 Ω - 50 Ω (MINIMUM) INSERTION LOSS	
FREQUENCY MHZ	COMMON
10	30.0
15	25.0
20	20.0
25	15.0
30	10.0
35	7.5
40	5.0
45	3.0
50	1.0
75	0.5
100	0.3
150	0.2
200	0.1
300	0.1
400	0.1
500	0.1
750	0.1
1000	0.1
1500	0.1
2000	0.1
3000	0.1
4000	0.1
5000	0.1
7500	0.1
10000	0.1

This document is proprietary to CORCOM INC. and is not to be reproduced nor used for manufacturing purposes except on CORCOM's order or prior written consent.



Mouser Electronics

Authorized Distributor

Click to View Pricing, Inventory, Delivery & Lifecycle Information:

[TE Connectivity:](#)

[30AYT6C](#) [6609073-2](#)